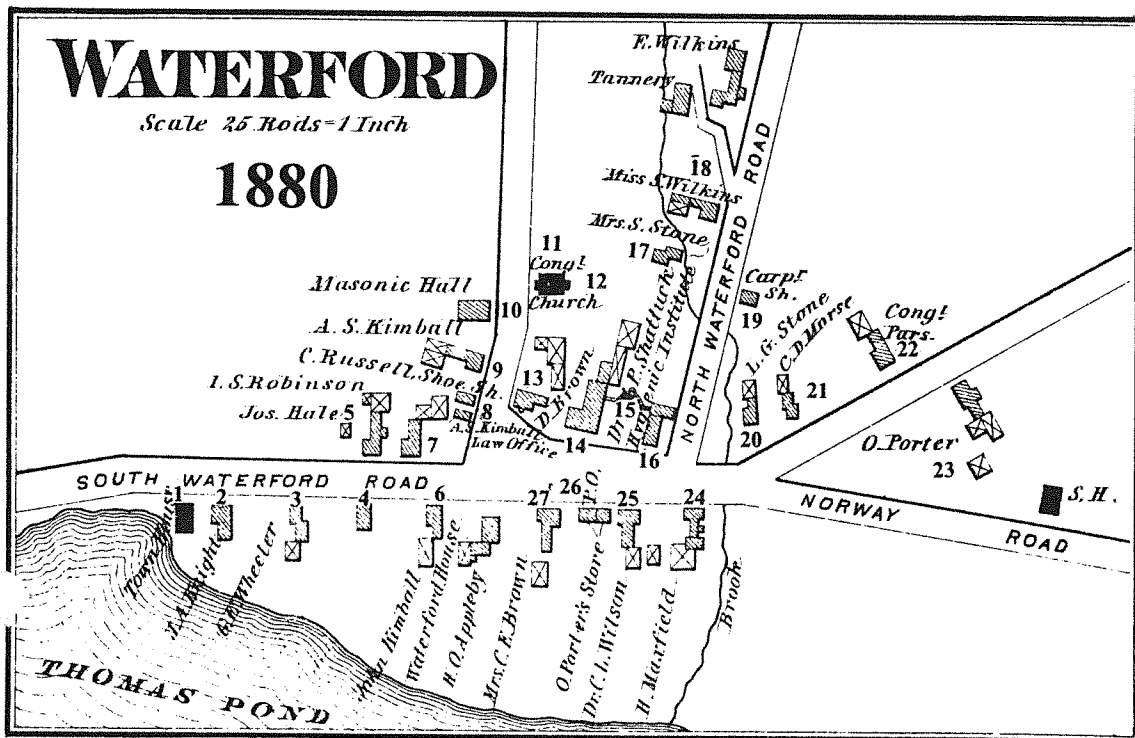


The Waterford Echoes

Volume 1 Number 2

June, 1980

Waterford Historical Society



Town of Waterford placed on National Historic Register

Waterford—A section of this scenic old village has been entered in the National Register of Historic Places, identifying it as an important part of the nation's historic and cultural heritage which ought to be preserved.

The announcement was made last week by Earl Shettleworth Jr., director of the Maine Historic Preservation Commission, whose staff prepared the nomination.

The Waterford Historic District is a grouping of 18th, 19th and 20th century buildings in an area on the shore of Keoka Lake known as "The Flat."

The town was first surveyed in 1775 and the first settler, David McWain, appeared the same year.

Another early settler was Eleazer Hamlin, father of the noted theologian Dr. Cyrus Hamlin and grandfather of Hannibal Hamlin, who lived on Paris Hill and served as Vice President of the United States in Lincoln's first term.

The first settler at Waterford Flat was Eli Longley, who owned all the property now included in the historic district. Longley built a log dwelling on his arrival in 1793, but passing travelers made so many calls on him that he opened a public house in 1797. That building, now considerably altered, still stands today and is known as the Lake House.

continued next page

Waterford Inventory as of 1880

- Waterford Town House, 1843
Greek Revival, 1 story, frame with clapboard exterior.
- House (A. Bradbury as of 1858; J.A. Knight as of 1880); Federal, 2½ stories, frame with clapboarded exterior.
- House (L.G. Robinson as of 1858; G.E. Wheeler as of 1880); Greek Revival, 2½ stories, frame with clapboarded exterior.
- Knight Library, 1911-1912, burned 1937, rebuilt 1938; John Calvin Stevens and John Howard Stevens of Portland Architects for the rebuilding; Colonial Revival, 2 stories, stone first story, frame second story with shingled exterior.
- House (Joseph Hale as of 1858 and 1880); Greek Revival, 1½ stories, frame with clapboarded exterior.
- House (O.W. Robinson as of 1858; John Kimball as of 1880); Greek Revival, 2½ stories, frame with clapboarded exterior.
- House (O.N.W. Robinson as of 1858; I.S. Robinson as of 1880); Federal, 2½ stories, frame with clapboarded exterior, fine Federal doorway and Palladian window.
- House (J.L. Haskell as of 1858; C. Russell Shoe Store as of 1880); Greek Revival, 2 stories, frame with clapboarded exterior.
- House (D. Brown as of 1858; A.S. Kimball as of 1880); Greek Revival, 1½ stories, frame with clapboarded exterior.
- Mount Tire'm Masonic Hall, 1879; Leandor Gage Stone, Builder; Greek Revival, 2½ stories, frame with clapboarded exterior.
- Wilkins Community House, 1928; John Calvin Stevens and John Howard Stevens of Portland, Architects; Colonial Revival, 1½ stories, frame with clapboarded exterior.
- First Congregational Church, 1928; John Calvin Stevens and John Howard Stevens of Portland, Architects; Colonial Revival, 1½ stories with tower, frame with clapboarded exterior.
- House (D. Brown II as of 1858 and 1880); Greek Revival, 2½ stories, frame with clapboarded exterior.
- Lake House (W. Shattuck as of 1858; Dr. W.P. Shattuck Hygiene Institute as of 1880); Federal, 2½ stories, frame with clapboarded exterior, Italianate portico.
- Lake House Gazebo; Italianate, 1 story, frame.
- Lake House Annex (Store as of 1858; Dr. W.P. Shattuck Hygiene Institute as of 1880); Greek Revival, 2½ stories, frame with clapboarded exterior, Italianate facade and rear gable detail.
- House (Mrs. S. Stone as of 1880); Federal, 1½ stories, frame with clapboarded exterior, Italianate doorway overhang, Colonial Revival dormers.
- House (Miss S. Wilkins as of 1880); Transitional Greek Revival-Italianate, 2½ stories, frame with clapboarded exterior.
- (Carpenter Shop as of 1880); 1½ stories, frame with shingled exterior.
- House (L.G. Stone as of 1880); Transitional Greek Revival-Italianate, 2½ stories, frame with clapboarded exterior.
- House; 1 story, frame with clapboarded exterior.
- House (Congregational Parsonage as of 1880); Greek Revival, 2½ stories, frame with clapboarded exterior.
- House (Oliver Porter as of 1858 and 1880); Federal, 2 stories, frame with clapboarded exterior.
- House, c.1850 (E. Maxfield as of 1858; H. Maxfield as of 1880); Greek Revival, 2 stories, frame with clapboarded exterior.
- House (C. Stevens as of 1858; Dr. C.L. Wilson as of 1880); Greek Revival, 2½ stories, frame with clapboarded exterior.
- (Oliver Porter's Store as of 1858 and 1880); Greek Revival, 2½ stories, frame with clapboarded exterior.
- House, 1805 (C. Brown as of 1858; Mrs. C.E. Brown as of 1880) Federal, 2½ stories, frame with clapboarded exterior.

Longley laid out the common which remains today, although reduced in size, and in 1802, he built a store which today forms a part of the L.R. Rounds store.

In 1817, Longley sold his tavern to Peter Warren, who in turn sold it in 1847 to Dr. Calvin Farrar.

Taking advantage of a nearby mineral spring, Farrar opened a highly successful spa. He was succeeded by a Dr. Prescott who in turn was followed by a Dr. Shattuck. Shattuck operated the establishment for many years as the Maine Hygiene Institute, "a hospital exclusively for lady patients employing eclectic treatment."

Waterford's popularity as a summer resort grew rapidly, and the institute became a hotel, the Lake House.

One of the earliest buildings in the village is the Levi Browne House, built in 1805. It was the birthplace and boyhood home of Charles Farrar Brown (1834-67), the renowned humorist who was better known by his pen name, Artemus Ward. Browne returned frequently to his early home and is buried by his father's side in Waterford.

An early store owner in the village was Ambrose A. Knight, who built a handsome Federal home in about 1810. Marked by a fan doorway, Palladian window and rich detailing, the Knight house is considered the most outstanding architecturally in the district.

Also notable is the Gage-Rice House, a Federal structure with extended attached buildings, built in 1817 by Dr. Leander Gage, who moved to Waterford from Bethel.

We thank the Advertiser-Democrat for allowing us to reprint the preceding article which appeared in the May 18th 1980 edition.



The Village Green, Waterford, Maine. Settled in 1775 by David McWain; Incorporated in 1797. "Before it the steep cliff of Mt. Tir'em rises abruptly, and behind spread the shining waters of Tom Pond (Keoka Lake)... The road by which it lies was once the Scoggin or Pequawket Trail, over which the red warriors made their way between the Saco intervals and the St. Lawrence, avoiding the shorter route through Crawford's Notch, to the westward, for fear of demons lodged in its rocky walls." (Don G. Seitz)



MAINE HISTORIC PRESERVATION COMMISSION
242 State Street
Augusta, Maine 04333



National Register of Historic Places in the State of Maine



This is to Certify that the

Waterford Historic District

has been reviewed by the Maine Historic Preservation Commission and by the Department of the Interior in Washington, D.C. and under the provisions of the National Historic Preservation Act of 1966 has been entered upon the National Register of Historic Places on April 24, 1980.

Be it further certified that by inclusion in the National Register the above named is recognized as a part of the Historical and Cultural Heritage of our nation and should be preserved as a living part of our community life and development in order to give a sense of orientation to the American people.

Earl S. Feldtowitz
State Historic Preservation Officer

As officially described, a National Register Historic District is "a geographically definable area, urban or rural, possessing a significant concentration, linkage, or continuity of sites, buildings, structures, or objects united by past events or aesthetically by plan or physical development." Certainly the newly listed Waterford District easily meets these criteria. The nomination prepared by the Maine Historic Preservation Commission declares "The Flat" to be "significant in totality as a remarkably unchanged and charming 19th century village, well maintained and reflecting in its quiet dignity the less frenetic pace of a departed era."

The listing of this district on the National Register has a number of effects on the area included and the individual property owners:

- A. Such listing gives official recognition to the historic and cultural value of the area as part of the Nation's heritage.
- B. The area and the properties included within it are afforded protection from adverse impact by projects funded, licensed or executed by the Federal Government.
- C. Properties within the historic district may qualify for matching preservation grants from the Department of the Interior.
- D. Depreciable properties within the historic district may qualify for rehabilitation tax incentives under the Tax Reform Act of 1976.
- E. Control and authority over the use and disposition of properties within the district remain exclusively with the owner unless Federal grants or tax incentives have been applied for and awarded to him or her.

From the above it will be noted that inclusion within the district imposes no restrictions on either the property owners or the municipality but does offer certain potential benefits. The Waterford Historic District is among the finest of its type in the state and its listing on the National Register should be a source of pride to those fortunate enough to enjoy its beauty and appreciate its heritage.

Frank A. Beard, Historian
Maine Historic Preservation
Commission

At the annual March meeting of the Waterford Historical Society the following Directors and Officers were elected.

- '81 Irene Bean
Guy Bancroft
Ober Kimball-Gladys Knight 3/6/80 elected
- '82 Wilma Whiting
Arthur Sanderson-John Ingraham 3/6/80 elected
Joseph Blackham
- '83 Stephen Dewing
Lawrence Lundstrom
Orris (Mike) Durgin
President: James Tyler

President: Christopher Rounds
V. Pres.: James Tyler
Sec.: Irene Millett
Treasurer: Margaret Sawyer



Mary Gage Rice Museum - Waterford.

The Mary Gage Rice Museum will be open this spring. The admission will be by donation and the planned schedule will coincide with the Knight Library Wednesday and Saturday — 2 - 5 PM.

IN MEMORIAM

Arthur Leroy Sanderson, 99, holder of the Boston Post cane, died February 24, 1980. He was a charter member of the Waterford Historical Society and one of its most dedicated members. He had been a director every term and was serving as one at the time of his decease. He was one of the most ambitious workers at all work sessions.

Guy W. Bancroft, Jr., 57, died April 21, 1980. He was serving as co-chairman with Edward N. Bean of the North Waterford Museum building. He was serving his third three-year term as a director of the Society. He was a very ambitious worker at our work sessions.

1980 Waterford Historical Society Members

- ALLEN, George R. - Bethel
- BANCROFT, Guy W. - Deceased April 21, 1980
- BEAN, Malcolm J. - Nashua, N.H.
- BEAN, Edward N. - Norway
- BEAN, Irene K. - Norway
- BLACKHAM, Joseph - South Waterford
- BLACKHAM, Sally - South Waterford
- COLLINS, T. Jewell - Hamden, Conn.
- CONANT, Ben E. - South Paris
- *DAVIS, Dorothy Hale - Bridgton
- *DEANS, Rachel Rice - South Portland
- *d'Errico, Angela - Worcester, Mass.
- DURGIN, Orris - Bridgton
- *ELLIOT, Olive M. - Waterford
- ERICKSON, Dorothy - N. Waterford
- FILLEBROWN, Charles A. - Waterford
- FILLEBROWN, Joan - South Portland
- FILLEBROWN, Mary T. - Waterford
- FILLEBROWN, W. William - South Portland
- *HAMMETT, Jane W. - Stamford, Conn.
- HOWE, Stanley R. - Bethel

- INGRAHAM, Elizabeth - East Waterford
- INGRAHAM, John - East Waterford
- KILBURN, M. Elizabeth - W. Newton, Mass.
- KIMBALL, Prentiss - South Waterford
- KIMBALL, Edith - South Waterford
- KING, Dr. Lois J. - West Haven, Conn.
- KNIGHT, Gladys - North Waterford
- LAHTI, Agnes - East Waterford
- LUNDSTROM, Laurence - Waterford
- McALLISTER, D. Elford - North Waterford
- McALLISTER, Doris K. - North Waterford
- MILLETT, Curtis - Waterford
- MILLETT, Irene - Waterford
- ORR, Charlotte L. - West Trenton, N.J.
- ORR, James M. - West Trenton, N.J.
- *PERKINS, Richard - (summer Norway)
winter: Redington Beach, Florida
- PLATE, Henry - Manlius, N.Y.
- PLATE, Joyce W. - Manlius, N.Y.
- *RICE, Ella E. - Fairfield, Conn.
- ROSS, Robert - Norwich, Vermont

- ROSS, Mary - Norwich, Vermont
- ROUNDS, Alice - Waterford
- ROUNDS, Christopher - Waterford
- ++ROUNDS, Dr. Ruth E. - West Haven, Conn.
- SAWYER, Billie A. - Waterford
- SAWYER, Margaret M. - Waterford
- SCOLA, Francis H., M.D. - Barrington, R.I.
- SCOLA, Patricia S. M.D. - Barrington, R.I.
- STOCKWELL, Fred F. - Winchester, Mass.
- STOCKWELL, Marjorie W. - Winchester, Mass.
- TACEY, Evelyn F. - Pittsburgh, Pa.
- TACEY, William S. - Pittsburgh, Pa.
- TYLER, James - Waterford
- TIPTON, Ruth - Winnemucca, Nevada
- WHEELER, William A. - Unionville, Conn.
- WILLOUGHBY, Keith - Waban, Mass.
- WILLOUGHBY, Lieselotte - Waban, Mass.
- *Life Member
- ++Honorary Member
- +Patron

Join the Waterford Historical Society which is dedicated to preserving the artifacts and lore of a unique town.

Please check the appropriate category and mail to Box 2, Waterford, Maine 04088, or bring to a meeting (1st Thursday at 7:30).

To the Treasurer: I am interested in becoming a member of the Society (please print).

Name _____
Address _____

MEMBER CLASSIFICATION

___ Life-Couple	\$75	___ Senior Citizen	\$ 1
___ Life	\$50	___ Student	\$1.00
___ Patron	\$25	___ Sustaining	\$2.50
___ Honorary	\$35	___ Contributing	\$10.00

Published semi-annually by the Waterford Historical Society, Christopher Rounds, Editor. Please address all inquiries and suggestions to Editor, Waterford Historical Society Newsletter, Waterford, Maine 04088.

I would like to donate _____ stones for the fireplace to be built at the Museum in Waterford Village, at \$5.00 a stone.

Name _____

Address _____

(please print)

Letter From The President

Dear Friends:

When things move in Waterford, they move all at once. With the relocation of the Mary Gage Museum and the Wilkin's Community House, Waterford seemed like the center of a giant chess game. In reflection, it is realized that a relatively small historical society has made some giant moves ahead. The acquisition and relocation of a museum with a valuable collection of Americana, the naming of Waterford to the National Historic Register, and the evergrowing number of new members are just a few examples of a growing society. All this was made possible through the generosity of citizens and friends of Waterford. A special thank you goes to Clayton Copp and Sons, who moved the museum, Alfred Murch, who built the cement foundation and gave his expertise along with Bill Fillebrown, who is donating his time to build the stone fireplace. Others whose help was freely given include many too numerous to mention but all are greatly appreciated. Thank you very much.

We are looking forward to an exciting year ahead. We need your support to continue and your involvement to make it worthwhile. Please check local publications for the calendar of events so you won't miss a thing.

See you this summer!

Yours truly,
Christopher Rounds, President
Waterford Historical Society

There will be potluck suppers at 7:30 pm on the first Thursday of every month from June through October at the North Waterford Historical Building. A program and business meeting will follow.

adv.

Waterford, Maine 1975-1976 was published in August, 1977. Copies are still available: from the Waterford Town Office, Mrs. Curtis Millett above Waterford Memorial School, and by mail, plus 75¢ postage and handling from Margaret Sawyer, Treasurer. In the State, the book is \$10.00, and if mailed, \$10.75. Out of State the book is \$9.52, plus 75¢. (That is less our state tax).

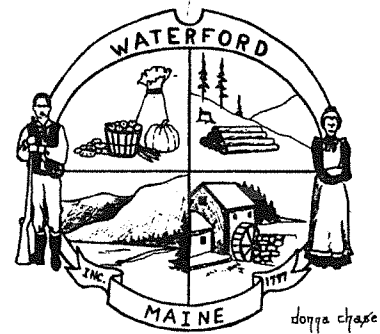


adv.

Waterford Historical Society
Waterford,
Maine 04088

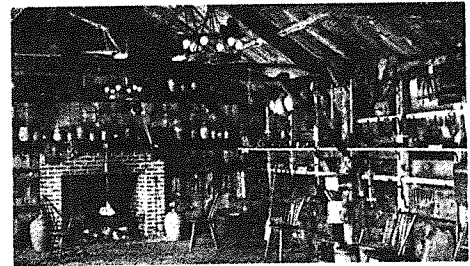
adv.

FOR SALE



6" square tile includes cork back, hanger and gift box. Sepia on tan background.

\$3.75 plus 20¢ sales tax



THE MUSEUM, WATERFORD, MAINE

4 1/8 x 5 3/8 notecard with envelope
Package of 10 - \$2.50 plus tax

Available at local stores and Town Office

adv.