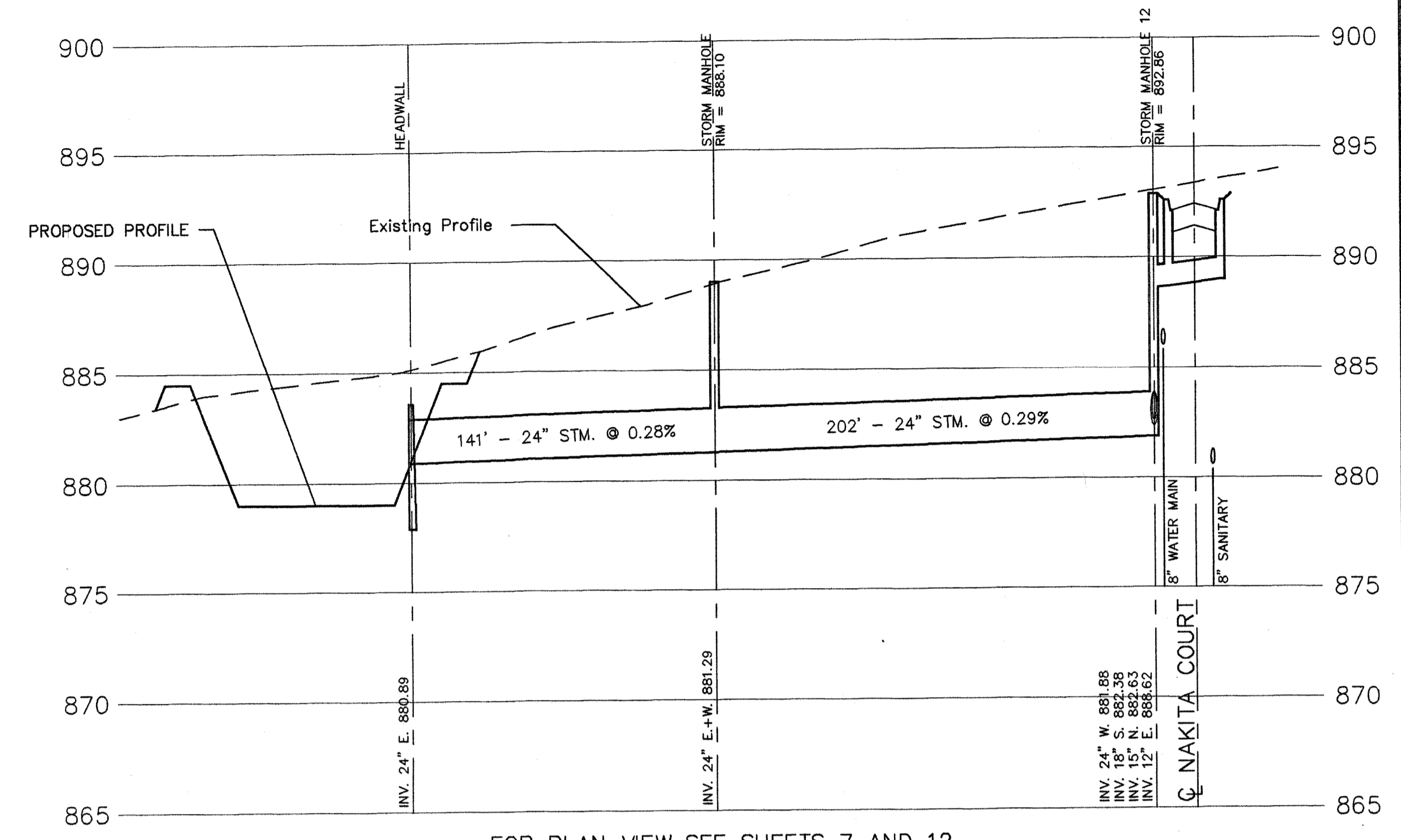
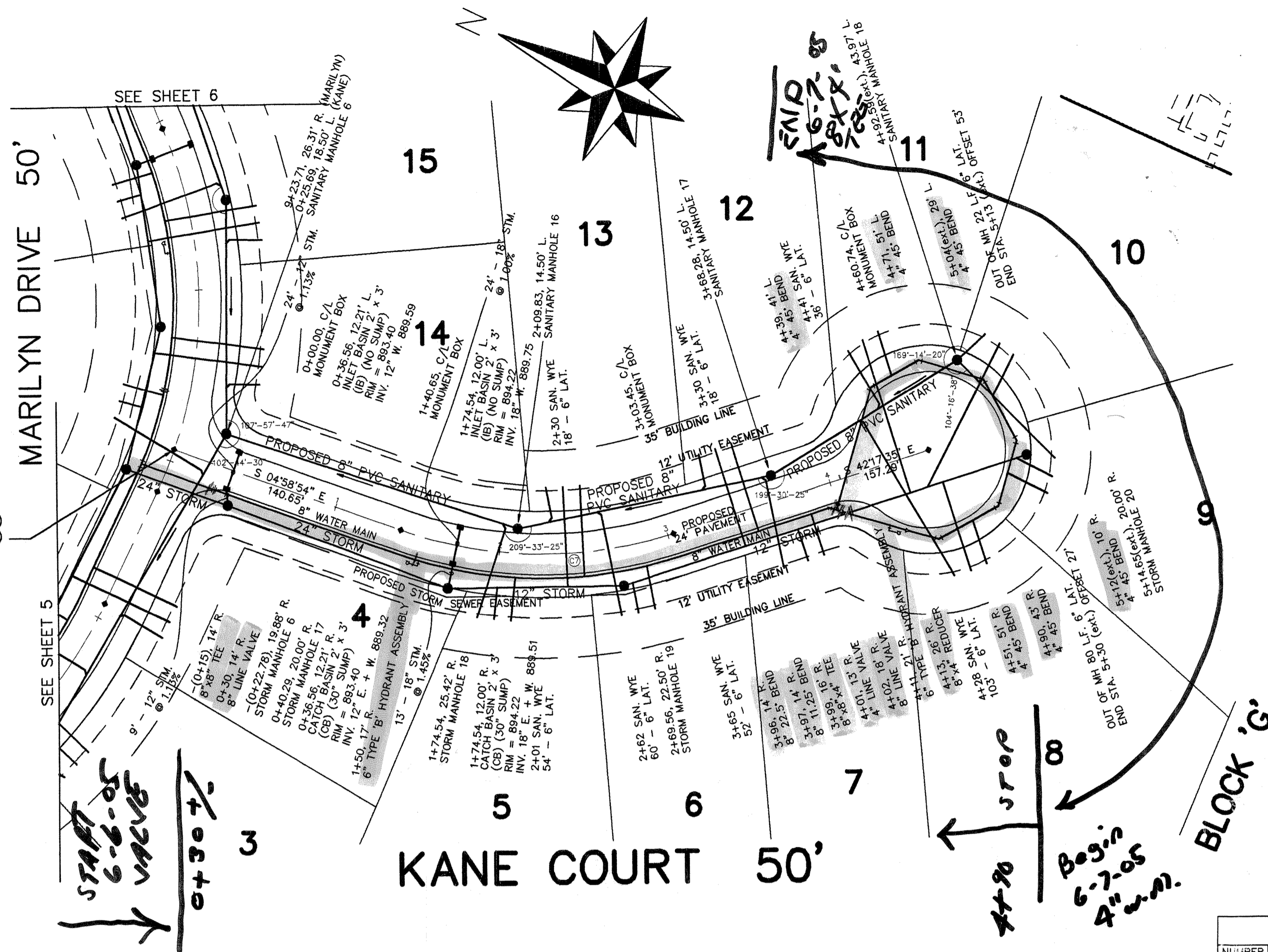
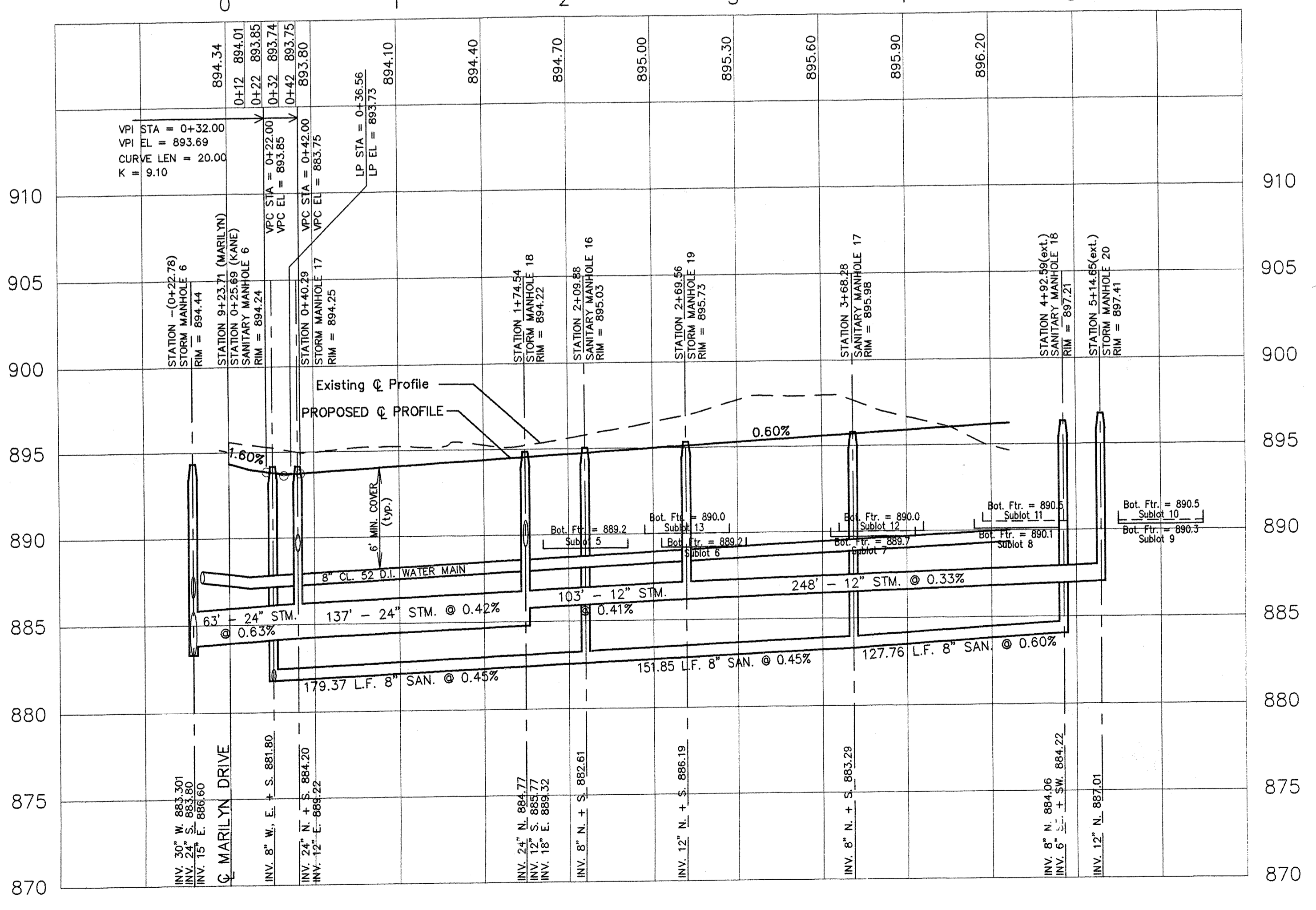


0+00.00 (KANE)
9+06.96 (MARILYN)



FOR PLAN VIEW SEE SHEETS 7 AND 12

NUMBER	RADIUS	CENTRAL ANGLE	ARC LENGTH	TANGENT	CHORD LENGTH	CHORD BEARING
07	250.00'	37°18'41"	162.80'	84.40'	159.94'	S 23°38'14" E



BENCHMARK: NORTHWEST CORNER OF HEADWALL
ON CARTER ROAD AT STATION 22+67
ELEVATION = 872.88

NOTE: ALL STORM SEWER PIPE USED SHALL BE ODOT ITEM 707.33 (HDPE) UNLESS OTHERWISE NOTED. WHEN STORM SEWER PIPE IS LABELED RCP, IT SHALL BE ODOT ITEM 706.06 REINFORCED CONCRETE PIPE.

A TEN FOOT MINIMUM HORIZONTAL SEPARATION (OUT-TO-OUT, CLEAR) WILL BE MAINTAINED BETWEEN THE WATER LINE AND SANITARY SEWER.

A 18-INCH MINIMUM VERTICAL SEPARATION (OUT-TO-OUT, CLEAR) WILL BE MAINTAINED BETWEEN THE WATER LINE AND SANITARY SEWER AT ALL CROSSINGS.

A FOUR FOOT MINIMUM HORIZONTAL SEPARATION (OUT-TO-OUT, CLEAR) WILL BE MAINTAINED BETWEEN THE WATER LINE AND STORM SEWER.

A 12-INCH MINIMUM VERTICAL SEPARATION (OUT-TO-OUT, CLEAR) WILL BE MAINTAINED BETWEEN THE WATER LINE AND STORM SEWER AT ALL CROSSINGS.

- LEGEND**
- Existing Sanitary Sewer
 - Existing Water Main
 - Existing Gas Main
 - PROPOSED STORM SEWER
 - PROPOSED SANITARY SEWER
 - PROPOSED WATER MAIN
 - Existing Manhole
 - PROPOSED MANHOLE
 - PROPOSED CATCH BASIN
 - PROPOSED YARD DRAIN
 - Existing Utility Pole
 - PROPOSED HYDRANT
 - MONUMENT BOX
 - BOTTOM OF FOOTER LEFT
 - BOTTOM OF FOOTER RIGHT

APPROVED AS NOTED
BY: *SDW* DATE: *12-3-04*
SEYMOUR D. WEISS & ASSOCIATES

UNDERGROUND UTILITIES
2 WORKING DAYS
BEFORE YOU DIG
CALL TOLL FREE 800-362-2764
OHIO UTILITIES PROTECTION SERVICE
NON-MEMBERS
MUST BE CALLED DIRECTLY

REV. NO.	DATE	REVISIONS
6	11/04	REVISED AS PER OHIO EPA
5	9/04	REVISED AS PER NORTH HILLS WATER DISTRICT
4	9/04	REVISED AS PER D.O.E.S.
3	7/04	REVISED AS PER COUNTY ENGINEER
2	7/04	REVISED AS PER D.O.E.S.
1	7/04	REVISED AS PER C.W.D.

FULTECH CONSULTING ENGINEERS, INC.
9885 Rockside Road, Suite 130
Valley View, Ohio 44125
(216) 524-9098

RED HAWK RESERVE
TOWNSHIP OF SAGAMORE HILLS
H.D. DEVELOPMENT COMPANY

PLAN AND PROFILE
KANE COURT—STATION 0+00.00 TO 4+60.74

PROJECT NUMBER 8438
SHEET 8 OF 26