

WALTER BOUREZ, III, P.E.
DON TRIEU, P.E.
DARREN CORDOVA, P.E.
NATHAN HERSHEY, P.E., P.L.S.
LEE G. BERGFELD, P.E.
BEN TUSTISON, P.E.
THOMAS ENGLER, P.E., CFM
MICHAEL MONCRIEF, P.E.
NICOLE ORTEGA-JEWELL, PMP
KYLE KNUTSON, P.E.
ANNE WILLIAMS, P.E.

FOUNDERS:
ANGUS NORMAN MURRAY
1913-1985
JOSEPH I. BURNS
1926-2021
DONALD E. KIENLEN, P.E.
1930-2023

MEMORANDUM

DATE: July 19, 2023
TO: Westervelt Ecological Services
FROM: Yuen Lenh, E.I.T., MBK Engineers
SUBJECT: Egbert Tract Water Diversion and Use Reporting Summary

Background

Egbert Tract was purchased by Westervelt in 2019 and encompasses approximately 2,771 acres. Prior to Westervelt's purchase, Egbert Tract was primarily utilized to farm corn and alfalfa. Pursuant to 2009 legislation, the State Water Resources Control Board (SWRCB) began to require annual online reporting of water diversion and use by riparian and pre-1914 water right claimants. Therefore, Statements of Water Diversion and Use (Statements) were filed to document water diversion and use under riparian and/or pre-1914 claims from surface water sources, as well as under the 1981 Contract Between North Delta Water Agency and the California Department of Water Resources. Each Statement (S020932, S020933, S020934, S020935, S020936, S020937, S020938, S020939, and S020940) identifies a single point of diversion and a designated place of use, which are shown in Figure 1. Table 1 identifies the source of surface water at each Statement's point of diversion and place of use acreage.

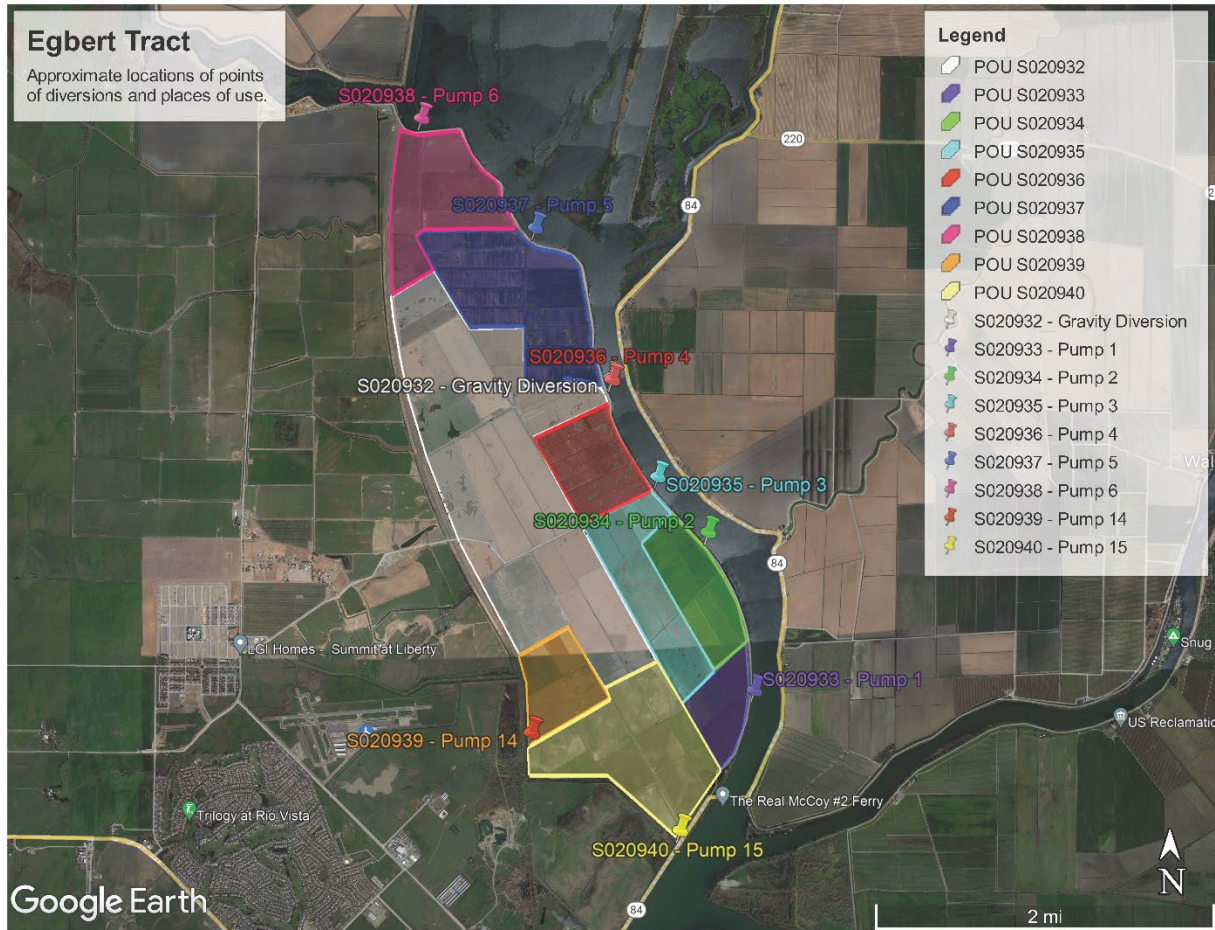


Figure 1. Statement Points of Diversion and Places of Use

Table 1. Place of Use Acreage by Statement

Statement	Source at Point of Diversion	Acreage
S020932	Cache Slough	1,034
S020933	Cache Slough	98
S020934	Cache Slough	158
S020935	Cache Slough	212
S020936	Cache Slough	162
S020937	Cache Slough	361
S020938	Cache Slough	247
S020939	Watson Hallow Slough / Cache Slough	134
S020940	Watson Hallow Slough / Cache Slough	365
Total		2,771

Reported Water Use

Following the initial filings, Supplemental Statements of Water Diversion and Use (Supplemental Statements) were filed annually through Water Year 2022, to document water diversion and use. As stated in the reports the diversions are not measured, and water use has been estimated using a variety of methods. Each of the estimation methods have uncertainties and limitations, the accuracy is influenced by the quality and reliability of weather data, spatial resolution, and subject matter technical expertise. From 2009 to 2015, the Supplemental Statements were prepared by Sierra Cattle Company (the prior property owner). In 2016, MBK Engineers (MBK) was assigned the responsibility for preparing the Supplemental Statements. Copies of the Supplemental Statements submitted from 2009 to 2022, are publicly available on the SWRCB’s Electronic Water Rights Information Management System (eWRIMS). Links to these reports can be found in Appendix A.

2009 – 2015: Reporting by Sierra Cattle Company

Sierra Cattle Company prepared and submitted the annual water use reports from 2009 to 2015. As per the notes provided in Table 2, reported water use was calculated using crop duty and consumptive use estimates. No additional details on the specific method for this calculation were described. Upon review of the reported quantities, there appear to be unit conversion errors for the periods of 2009 to 2013. Nevertheless, it appears that the intent was to report the same quantities each month, for every year, under each Supplemental Statement. This was not an uncommon practice for the time. Following this intent, it appears that for some years data was switched between S020932 and S020935. Table 2 summarizes the total reported water use within Egbert Tract with adjustments for these apparent issues to follow the same intent of reporting the same quantities for each year under each Supplemental Statement.

Table 2. Reported* Water Use Summary 2009 – 2015 (AF)

	2009	2010	2011	2012	2013	2014	2015
Jan	0	0	0	0	0	0	0
Feb	0	0	0	0	0	0	0
Mar	0	0	0	0	0	0	0
Apr	1,591	1,591	1,591	1,591	1,591	1,591	1,591
May	1,591	1,591	1,591	1,591	1,591	1,591	1,591
Jun	2,254	2,254	2,254	2,254	2,254	2,254	2,254
Jul	2,254	2,254	2,254	2,254	2,254	2,254	2,254
Aug	2,254	2,254	2,254	2,254	2,254	2,254	2,254
Sep	2,254	2,254	2,254	2,254	2,254	2,254	2,254
Oct	1,370	1,370	1,370	1,370	1,370	1,370	1,370
Nov	0	0	0	0	0	0	0
Dec	0	0	0	0	0	0	0
Total	13,569	13,569	13,569	13,569	13,569	13,569	13,569

*Quantities within this table for 2009-2013 were adjusted from those reported within the Supplemental Statements when errors were apparent.

2016 – 2021: ITRC Method

Supplemental Statements filed for 2016 through 2021, estimated water diversions and use using the Irrigation Training & Research Center’s (ITRC) reported crop evapotranspiration values for each crop using surface irrigation. These values were adjusted by year type and actual measured reference evaporation to determine the crop consumptive use. Diversions and beneficial use were estimated based on the ETc adjusted for effective precipitation and multiplied by a factor to account for field and system irrigation efficiency. Crop acreages and months of irrigation were provided by Sierra Cattle (2016 – 2018) and Westervelt (2019 – 2021) for each place of use, which included corn, alfalfa, wheat, and beans. Table 3 summarizes the total reported and average annual water use from 2016 to 2021.

Table 3. Reported Water Use Summary 2016 – 2021 (AF)

	2016	2017	2018	2019	2020	2021	Avg
Jan	0	0	0	0	0	0	0
Feb	0	0	0	0	0	0	0
Mar	0	0	0	0	0	0	0
Apr	0	0	0	0	0	0	0
May	172	3	0	0	0	0	29
Jun	1,395	2,558	2,600	2,537	1,786	1,547	2,071
Jul	1,704	2,677	2,621	2,359	2,024	1,123	2,085
Aug	1,206	1,567	1,380	1,468	1,445	924	1,332
Sep	134	0	0	0	0	0	22
Oct	0	0	0	0	0	401*	0
Nov	0	0	0	0	0	223*	0
Dec	0	0	0	0	0	155*	0
Total	4,611	6,805	6,601	6,364	5,255	4,373	5,538

*The 2021 Supplemental Statements contain reported quantities for only Jan – Sep, which were calculated using the ITRC method, as the water use reporting period transitioned from a calendar year to a water year basis. Reported quantities for Oct – Dec 2021 were calculated using the OpenET method (described below) and were reported under water year 2022. The Oct-Dec 2021 values have been excluded from the Avg calculation since a different estimation method was used.

2022: OpenET Method

Pursuant to Senate Bill 155, the reporting period for annual water use changed from a calendar year basis to a water year (October 1 through September 30) basis, beginning in September 2021. Therefore, in 2022, reporting of the nine Supplemental Statements on Egbert Tract were prepared based on the water year. For consistency within this memorandum, we have compiled the quantities by calendar year. OpenET is a network that was designed to measure crop evapotranspiration data using satellite imagery, which was publicly launched in September 2021. The application of OpenET to estimate and report water use under water rights is supported by

the Delta Watermaster and is now used by various water right holders in the Delta for reporting purposes. As per the direction from the Delta Watermaster, water users are to report the consumptive use of the place of use over the entire water year – not just during the months that irrigation occurred. The reported quantities were not adjusted for precipitation, conveyance losses, or other factors that differ between evapotranspiration and diversions. Table 3 includes the reported quantities for October through December 2022, and Table 4 summarizes the reported water use for January 2022. In addition, Table 4 includes the calculated quantities for October through December 2023, from OpenET which have not yet been reported, but will be submitted with Supplemental Statements for Water Year 2023 (by February 1, 2024).

Table 4. Reported Water Use Summary 2022 (AF)

Month	2022
Jan	258
Feb	415
Mar	599
Apr	790
May	729
Jun	1,085
Jul	1,215
Aug	1,130
Sep	693
Oct*	441
Nov*	186
Dec*	111
Total	7,652

*Total reported quantities for Oct – Dec 2022 have not yet been reported but were calculated using the OpenET method and will be reported for Water Year 2023.

Summary

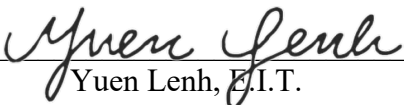
Reported water use for 2009 to 2015, was the same from year to year, about 13,600 AF per year (4.9 AF per acre); however, detailed explanation for the numbers was not included. Reported diversions for 2016 to 2021, was on average about 5,500 AF per year (2.0 AF per acre), based on irrigation occurring generally May through September. These quantities were based on consumptive use estimates that were adjusted to better reflect water right diversions. Reported water use for Water Year 2022 totaled about 7,700 AF (2.8 AF per acre). These quantities were based on refined consumptive use estimates without additional adjustment. Table 5 summarizes the total reported water use from 2009 to 2022 by Statement (with appropriate adjustments, as previously described).

Table 5. Reported Water Use Summary 2009 – 2022 (AF)

	S020932	S020933	S020934	S020935	S020936	S020937	S020938	S020939	S020940	Total
2009 – 2015¹	884	1,238	1,547	5,569	884	1,238	884	663	663	13,569
2016	821	231	415	461	407	882	472	302	620	4,611
2017	2,429	257	339	572	456	969	495	388	900	6,805
2018	2,392	266	333	497	440	953	434	385	901	6,601
2019	2,256	255	318	528	421	910	452	368	856	6,364
2020	2,218	252	296	432	401	847	171	81	557	5,255
2021²	1,282	168	315	234	396	920	473	92	493	4,373
2022³	2,994	250	419	562	402	1,035	646	375	969	7,652

1. Total reported quantities for 2009 – 2015 were the same from year to year (after adjusting for apparent issues).
2. Total reported quantities for 2021 were calculated using the ITRC method for Jan – Sep and OpenET method for Oct – Dec.
3. Total reported quantities for Oct – Dec 2022 have not yet been reported but were calculated using the OpenET method and will be reported for Water Year 2023.

In summary, reported water right diversions and use on Egbert Tract has varied from 4,611 AF per year, to up to 13,569 AF per year. All of the reported quantities have relied on consumptive use estimates. The lower reported quantities were estimated based on consumptive use calculations with adjustments to better reflect actual conditions (i.e., individual crop acreage, ETc, local precipitation) to report diversions (irrigation system efficiency factor, limited to months when irrigation occurred) in a given year. The higher reported quantities were estimated based on a set value and acreage and were reported the same way from year to year. The most recent consumptive use reporting method (OpenET) reported quantities year-round, based on refined consumptive use models that do consider actual conditions, but do not adjust to represent surface water diversions and results in quantities that are between the values reported using the other two methods.



Yuen Lenh, E.I.T.

YL/aw/oh
R:\5299-2\DRAFT Egbert Tract Water Rights Summary

Attachment: Appendix A. Egbert Tract Statements of Water Diversion and Use

Appendix A. Egbert Tract Statements of Water Diversion and Use

Appendix A. Egbert Tract Statements of Water Diversion and Use

S020932	
ISW DU	https://ciwqs.waterboards.ca.gov/ciwqs/ewrims/DocumentRetriever.jsp?appNum=S020932&wrType=Statement%20of%20Div%20and%20Use
2009	https://rms.waterboards.ca.gov/StatementPrint_2013.aspx?FORM_ID=98210
2010	https://rms.waterboards.ca.gov/StatementPrint_2013.aspx?FORM_ID=98211
2011	https://rms.waterboards.ca.gov/StatementPrint_2013.aspx?FORM_ID=98212
2012	https://rms.waterboards.ca.gov/StatementPrint_2013.aspx?FORM_ID=173506
2013	https://rms.waterboards.ca.gov/StatementPrint_2013.aspx?FORM_ID=170487
2014	https://rms.waterboards.ca.gov/StatementPrint_2015b.aspx?FORM_ID=272158
2015	https://rms.waterboards.ca.gov/StatementPrint_2015b.aspx?FORM_ID=258883
2016	https://rms.waterboards.ca.gov/StatementPrint_2016b.aspx?FORM_ID=310200
2017	https://rms.waterboards.ca.gov/StatementPrint_2017.aspx?FORM_ID=357220
2018	https://rms.waterboards.ca.gov/StatementPrint_2018b.aspx?FORM_ID=405558
2019	https://rms.waterboards.ca.gov/StatementPrint_2019.aspx?FORM_ID=451601
2020	https://rms.waterboards.ca.gov/StatementPrint_2020.aspx?FORM_ID=498371
2021	https://rms.waterboards.ca.gov/Print_ST2021.aspx?FORM_ID=554381
2022	https://rms.waterboards.ca.gov/Print_ST2022.aspx?FORM_ID=599318

S020933	
ISW DU	https://ciwqs.waterboards.ca.gov/ciwqs/ewrims/DocumentRetriever.jsp?appNum=S020933&wrType=Statement%20of%20Div%20and%20Use
2009	https://rms.waterboards.ca.gov/StatementPrint_2013.aspx?FORM_ID=103691
2010	https://rms.waterboards.ca.gov/StatementPrint_2013.aspx?FORM_ID=103692
2011	https://rms.waterboards.ca.gov/StatementPrint_2013.aspx?FORM_ID=103693
2012	https://rms.waterboards.ca.gov/StatementPrint_2013.aspx?FORM_ID=174619
2013	https://rms.waterboards.ca.gov/StatementPrint_2013.aspx?FORM_ID=171616
2014	https://rms.waterboards.ca.gov/StatementPrint_2015b.aspx?FORM_ID=272159
2015	https://rms.waterboards.ca.gov/StatementPrint_2015b.aspx?FORM_ID=258884
2016	https://rms.waterboards.ca.gov/StatementPrint_2016b.aspx?FORM_ID=316517
2017	https://rms.waterboards.ca.gov/StatementPrint_2017.aspx?FORM_ID=364248
2018	https://rms.waterboards.ca.gov/StatementPrint_2018b.aspx?FORM_ID=412403
2019	https://rms.waterboards.ca.gov/StatementPrint_2019.aspx?FORM_ID=458582
2020	https://rms.waterboards.ca.gov/StatementPrint_2020.aspx?FORM_ID=505330
2021	https://rms.waterboards.ca.gov/Print_ST2021.aspx?FORM_ID=555495
2022	https://rms.waterboards.ca.gov/Print_ST2022.aspx?FORM_ID=600426

S020934	
ISW DU	https://ciwqs.waterboards.ca.gov/ciwqs/ewrims/DocumentRetriever.jsp?appNum=S020934&wrType=Statement%20of%20Div%20and%20Use
2009	https://rms.waterboards.ca.gov/StatementPrint_2013.aspx?FORM_ID=99500
2010	https://rms.waterboards.ca.gov/StatementPrint_2013.aspx?FORM_ID=99501
2011	https://rms.waterboards.ca.gov/StatementPrint_2013.aspx?FORM_ID=99502
2012	https://rms.waterboards.ca.gov/StatementPrint_2013.aspx?FORM_ID=174223
2013	https://rms.waterboards.ca.gov/StatementPrint_2013.aspx?FORM_ID=171211

Appendix A. Egbert Tract Statements of Water Diversion and Use

2014	https://rms.waterboards.ca.gov/StatementPrint_2015b.aspx?FORM_ID=272160
2015	https://rms.waterboards.ca.gov/StatementPrint_2015b.aspx?FORM_ID=258885
2016	https://rms.waterboards.ca.gov/StatementPrint_2016b.aspx?FORM_ID=314116
2017	https://rms.waterboards.ca.gov/StatementPrint_2017.aspx?FORM_ID=361850
2018	https://rms.waterboards.ca.gov/StatementPrint_2018b.aspx?FORM_ID=409948
2019	https://rms.waterboards.ca.gov/StatementPrint_2019.aspx?FORM_ID=456209
2020	https://rms.waterboards.ca.gov/StatementPrint_2020.aspx?FORM_ID=502981
2021	https://rms.waterboards.ca.gov/Print_ST2021.aspx?FORM_ID=554382
2022	https://rms.waterboards.ca.gov/Print_ST2022.aspx?FORM_ID=599319

S020935	
ISW DU	https://ciwqs.waterboards.ca.gov/ciwqs/ewrims/DocumentRetriever.jsp?appNum=S020935&wrType=Statement%20of%20Div%20and%20Use
2009	https://rms.waterboards.ca.gov/StatementPrint_2013.aspx?FORM_ID=102440
2010	https://rms.waterboards.ca.gov/StatementPrint_2013.aspx?FORM_ID=102441
2011	https://rms.waterboards.ca.gov/StatementPrint_2013.aspx?FORM_ID=102442
2012	https://rms.waterboards.ca.gov/StatementPrint_2013.aspx?FORM_ID=174236
2013	https://rms.waterboards.ca.gov/StatementPrint_2013.aspx?FORM_ID=171225
2014	https://rms.waterboards.ca.gov/StatementPrint_2015b.aspx?FORM_ID=272163
2015	https://rms.waterboards.ca.gov/StatementPrint_2015b.aspx?FORM_ID=258888
2016	https://rms.waterboards.ca.gov/StatementPrint_2016b.aspx?FORM_ID=314192
2017	https://rms.waterboards.ca.gov/StatementPrint_2017.aspx?FORM_ID=355044
2018	https://rms.waterboards.ca.gov/StatementPrint_2018b.aspx?FORM_ID=403098
2019	https://rms.waterboards.ca.gov/StatementPrint_2019.aspx?FORM_ID=449435
2020	https://rms.waterboards.ca.gov/StatementPrint_2020.aspx?FORM_ID=496191
2021	https://rms.waterboards.ca.gov/Print_ST2021.aspx?FORM_ID=555200
2022	https://rms.waterboards.ca.gov/Print_ST2022.aspx?FORM_ID=600133

S020936	
ISW DU	https://ciwqs.waterboards.ca.gov/ciwqs/ewrims/DocumentRetriever.jsp?appNum=S020936&wrType=Statement%20of%20Div%20and%20Use
2009	https://rms.waterboards.ca.gov/StatementPrint_2013.aspx?FORM_ID=100943
2010	https://rms.waterboards.ca.gov/StatementPrint_2013.aspx?FORM_ID=100944
2011	https://rms.waterboards.ca.gov/StatementPrint_2013.aspx?FORM_ID=100945
2012	https://rms.waterboards.ca.gov/StatementPrint_2013.aspx?FORM_ID=174222
2013	https://rms.waterboards.ca.gov/StatementPrint_2013.aspx?FORM_ID=171210
2014	https://rms.waterboards.ca.gov/StatementPrint_2015b.aspx?FORM_ID=272165
2015	https://rms.waterboards.ca.gov/StatementPrint_2015b.aspx?FORM_ID=258890
2016	https://rms.waterboards.ca.gov/StatementPrint_2016b.aspx?FORM_ID=314091
2017	https://rms.waterboards.ca.gov/StatementPrint_2017.aspx?FORM_ID=357391
2018	https://rms.waterboards.ca.gov/StatementPrint_2018b.aspx?FORM_ID=405279
2019	https://rms.waterboards.ca.gov/StatementPrint_2019.aspx?FORM_ID=451763
2020	https://rms.waterboards.ca.gov/StatementPrint_2020.aspx?FORM_ID=498525
2021	https://rms.waterboards.ca.gov/Print_ST2021.aspx?FORM_ID=555437

Appendix A. Egbert Tract Statements of Water Diversion and Use

2022	https://rms.waterboards.ca.gov/Print_ST2022.aspx?FORM_ID=600368
------	-----------------------------------------------------------------------------------------------------------------------------------------------

S020937	
ISW DU	https://ciwqs.waterboards.ca.gov/ciwqs/ewrims/DocumentRetriever.jsp?appNum=S020937&wrType=Statement%20of%20Div%20and%20Use
2009	https://rms.waterboards.ca.gov/StatementPrint_2013.aspx?FORM_ID=107954
2010	https://rms.waterboards.ca.gov/StatementPrint_2013.aspx?FORM_ID=107955
2011	https://rms.waterboards.ca.gov/StatementPrint_2013.aspx?FORM_ID=107956
2012	https://rms.waterboards.ca.gov/StatementPrint_2013.aspx?FORM_ID=173481
2013	https://rms.waterboards.ca.gov/StatementPrint_2013.aspx?FORM_ID=170462
2014	https://rms.waterboards.ca.gov/StatementPrint_2015b.aspx?FORM_ID=272043
2015	https://rms.waterboards.ca.gov/StatementPrint_2015b.aspx?FORM_ID=258766
2016	https://rms.waterboards.ca.gov/StatementPrint_2016b.aspx?FORM_ID=309974
2017	https://rms.waterboards.ca.gov/StatementPrint_2017.aspx?FORM_ID=365772
2018	https://rms.waterboards.ca.gov/StatementPrint_2018b.aspx?FORM_ID=414467
2019	https://rms.waterboards.ca.gov/StatementPrint_2019.aspx?FORM_ID=460149
2020	https://rms.waterboards.ca.gov/StatementPrint_2020.aspx?FORM_ID=506949
2021	https://rms.waterboards.ca.gov/Print_ST2021.aspx?FORM_ID=549977
2022	https://rms.waterboards.ca.gov/Print_ST2022.aspx?FORM_ID=594948

S020938	
ISW DU	https://ciwqs.waterboards.ca.gov/ciwqs/ewrims/DocumentRetriever.jsp?appNum=S020938&wrType=Statement%20of%20Div%20and%20Use
2009	https://rms.waterboards.ca.gov/StatementPrint_2013.aspx?FORM_ID=98192
2010	https://rms.waterboards.ca.gov/StatementPrint_2013.aspx?FORM_ID=98193
2011	https://rms.waterboards.ca.gov/StatementPrint_2013.aspx?FORM_ID=98194
2012	https://rms.waterboards.ca.gov/StatementPrint_2013.aspx?FORM_ID=174933
2013	https://rms.waterboards.ca.gov/StatementPrint_2013.aspx?FORM_ID=171932
2014	https://rms.waterboards.ca.gov/StatementPrint_2015b.aspx?FORM_ID=272050
2015	https://rms.waterboards.ca.gov/StatementPrint_2015b.aspx?FORM_ID=258773
2016	https://rms.waterboards.ca.gov/StatementPrint_2016b.aspx?FORM_ID=318077
2017	https://rms.waterboards.ca.gov/StatementPrint_2017.aspx?FORM_ID=357160
2018	https://rms.waterboards.ca.gov/StatementPrint_2018b.aspx?FORM_ID=405029
2019	https://rms.waterboards.ca.gov/StatementPrint_2019.aspx?FORM_ID=451544
2020	https://rms.waterboards.ca.gov/StatementPrint_2020.aspx?FORM_ID=498318
2021	https://rms.waterboards.ca.gov/Print_ST2021.aspx?FORM_ID=554070
2022	https://rms.waterboards.ca.gov/Print_ST2022.aspx?FORM_ID=599013

S020939	
ISW DU	https://ciwqs.waterboards.ca.gov/ciwqs/ewrims/DocumentRetriever.jsp?appNum=S020939&wrType=Statement%20of%20Div%20and%20Use
2009	https://rms.waterboards.ca.gov/StatementPrint_2013.aspx?FORM_ID=106595
2010	https://rms.waterboards.ca.gov/StatementPrint_2013.aspx?FORM_ID=106596

Appendix A. Egbert Tract Statements of Water Diversion and Use

2011	https://rms.waterboards.ca.gov/StatementPrint_2013.aspx?FORM_ID=106597
2012	https://rms.waterboards.ca.gov/StatementPrint_2013.aspx?FORM_ID=173482
2013	https://rms.waterboards.ca.gov/StatementPrint_2013.aspx?FORM_ID=170463
2014	https://rms.waterboards.ca.gov/StatementPrint_2015b.aspx?FORM_ID=272056
2015	https://rms.waterboards.ca.gov/StatementPrint_2015b.aspx?FORM_ID=258780
2016	https://rms.waterboards.ca.gov/StatementPrint_2016b.aspx?FORM_ID=309975
2017	https://rms.waterboards.ca.gov/StatementPrint_2017.aspx?FORM_ID=366366
2018	https://rms.waterboards.ca.gov/StatementPrint_2018b.aspx?FORM_ID=414468
2019	https://rms.waterboards.ca.gov/StatementPrint_2019.aspx?FORM_ID=460709
2020	https://rms.waterboards.ca.gov/StatementPrint_2020.aspx?FORM_ID=507461
2021	https://rms.waterboards.ca.gov/Print_ST2021.aspx?FORM_ID=554072
2022	https://rms.waterboards.ca.gov/Print_ST2022.aspx?FORM_ID=599015

S020940	
ISW DU	https://ciwqs.waterboards.ca.gov/ciwqs/ewrims/DocumentRetriever.jsp?appNum=S020940&wrType=Statement%20of%20Div%20and%20Use
2009	https://rms.waterboards.ca.gov/StatementPrint_2013.aspx?FORM_ID=103673
2010	https://rms.waterboards.ca.gov/StatementPrint_2013.aspx?FORM_ID=103674
2011	https://rms.waterboards.ca.gov/StatementPrint_2013.aspx?FORM_ID=103675
2012	https://rms.waterboards.ca.gov/StatementPrint_2013.aspx?FORM_ID=173122
2013	https://rms.waterboards.ca.gov/StatementPrint_2013.aspx?FORM_ID=170101
2014	https://rms.waterboards.ca.gov/StatementPrint_2015b.aspx?FORM_ID=272061
2015	https://rms.waterboards.ca.gov/StatementPrint_2015b.aspx?FORM_ID=258785
2016	https://rms.waterboards.ca.gov/StatementPrint_2016b.aspx?FORM_ID=307895
2017	https://rms.waterboards.ca.gov/StatementPrint_2017.aspx?FORM_ID=361529
2018	https://rms.waterboards.ca.gov/StatementPrint_2018b.aspx?FORM_ID=409985
2019	https://rms.waterboards.ca.gov/StatementPrint_2019.aspx?FORM_ID=455906
2020	https://rms.waterboards.ca.gov/StatementPrint_2020.aspx?FORM_ID=502691
2021	https://rms.waterboards.ca.gov/Print_ST2021.aspx?FORM_ID=552119
2022	https://rms.waterboards.ca.gov/Print_ST2022.aspx?FORM_ID=597083