
Gates Chili School District Demographic Study & Enrollment Projections



February 2012

Gates Chili School District Demographic Study & Enrollment Projections



GENESEE/FINGER LAKES
Regional Planning Council

February 2012

Prepared by the
Genesee/Finger Lakes Regional Planning Council
50 West Main Street, Suite 8107
Rochester, New York 14614

Mission Statement

The Genesee/Finger Lakes Regional Planning Council (G/FLRPC) will identify, define, and inform its member counties of issues and opportunities critical to the physical, economic, and social health of the region. G/FLRPC provides forums for discussion, debate, and consensus building, and develops and implements a focused action plan with clearly defined outcomes, which include programs, personnel, and funding.

TABLE OF CONTENTS

Chapter 1 – Background and Methodology	1
1.1 Introduction.....	1
1.2 Methodology.....	1
Chapter 2 – Historical Enrollment.....	2
2.1 Gates Chili School District Historical Enrollment.....	2
2.2 East Irondequoit School District Historical Enrollment	3
2.3 Rush-Henrietta School District Historical Enrollment.....	3
2.4 Sweet Home School District Historical Enrollment	4
Chapter 3 – School District Socio-Economic and Demographic Data	5
3.1 Gates Chili School District Socio-Economic and Demographic Data	5
3.2 East Irondequoit School District Socio-Economic and Demographic Data.....	7
3.3 Rush-Henrietta School District Socio-Economic and Demographic Data.....	8
3.4 Sweet Homes School District Socio-Economic and Demographic Data	10
Chapter 4 – Elementary School District Socio-Economic and Demographic Data	14
4.1 Armstrong Elementary School District Socio-Economic and Demographic Data.....	15
4.2 Brasser Elementary School District Socio-Economic and Demographic Data.....	16
4.3 Disney Elementary School District Socio-Economic and Demographic Data.....	16
4.4 Paul Road Elementary School District Socio-Economic and Demographic Data	17
Chapter 5 – Residential Development Activity	19
5.1 Town of Gates Residential Building Activity.....	19
5.2 Town of Chili Residential Building Activity	20
Chapter 6 – Gates Chili School Enrollment Projections.....	21
6.1 Five-Year Average Survival Cohort Enrollment Projections.....	23
6.2 Ten-Year Average Survival Cohort Enrollment Projections	23
6.3 Fifteen-Year Average Survival Cohort Enrollment Projections	23
Appendices	26
Appendix A- Gates Chili School District Birth to Kindergarten Survival Cohort.....	26
Appendix B- Gates Chili School District 5-Year Enrollment Projections	27
Appendix C- Gates Chili School District 10-Year Enrollment Projections	28
Appendix D- Gates Chili School District 15-Year Enrollment Projections.....	29
Appendix E- School District Demographic Data 1990.....	31
Appendix F- School District Demographic Data 2000	34
Appendix G- School District Demographic Data 2010	38
Appendix H- Gates Chili Elementary School District Data 1990.....	41
Appendix I- Gates Chili Elementary School District Data 2000	42
Appendix J- Gates Chili Elementary School District Data 2010	43

TABLE OF FIGURES

Figure 1 Gates Chili School District Historical Enrollment	2
Figure 2 East Irondequoit School District Historical Enrollment.....	3
Figure 3 Rush-Henrietta School District Historical Enrollment.....	4
Figure 4 Sweet Home School District Historical Enrollment.....	4
Figure 5 Gates Chili School District Live Births.....	7
Figure 6 School District Population	11
Figure 7 School District Median Household Income	11
Figure 8 School District Hispanic or Latino Population.....	11
Figure 9 School District Language 1990.....	12
Figure 10 School District Language 2000.....	12
Figure 11 School District Language 2010.....	12
Figure 12 School District Educational Attainment 1990.....	12
Figure 13 School District Educational Attainment 2000.....	13
Figure 14 School District Educational Attainment 2010.....	13
Figure 15 Gates Chili Elementary School Districts Map	15
Figure 16 Gates Chili Elementary School District Population	17
Figure 17 Gates Chili Elementary School District Hispanic or Latino Population	18
Figure 18 Gates Chili Elementary School District Population Under 18	18
Figure 19 Gates Chili Elementary School District Population 65 and Older	18
Figure 20 Residential Units Permitted for Development Towns of Gates and Chili.....	19
Figure 21 Town of Gates Areas for Possible Residential Development	21
Figure 22 Town of Chili Areas for Possible Residential Development.....	22
Figure 23 Gates Chili School District Enrollment Projections Total Enrollment	24
Figure 24 Gates Chili School District Enrollment Projections Grades K-5	24
Figure 25 Gates Chili School District Enrollment Projections Grades 6-8	24
Figure 26 Gates Chili School District Enrollment Projections Grades 9-12	25

Chapter 1 – Background and Methodology

1.1 Introduction

Genesee/Finger Lakes Regional Planning Council (G/FLRPC) prepared enrollment projections for the Gates Chili School District for the period beginning 2012-2013 and ending with the year 2016-2017. The Gates Chili School District contains portions of the Town of Gates and the Town of Chili.

In addition to the enrollment projections an analysis of socio-economic and demographic data was completed for the Gates Chili School District as well as for three other similarly sized school districts in Western New York. These other school districts used for comparisons were: East Irondequoit School District in Monroe County; Rush-Henrietta School District in Monroe County; and Sweet Home School District in Erie County. Furthermore, for the Gates Chili School District, analysis was also done on the sub-district level for each of the four elementary school districts: Armstrong, Brasser, Disney, and Paul Road.

A development and building trend analysis was also completed for the Gates Chili School District based upon local building permit data as well as feedback from local development officials. This information, in addition to the socio-economic and demographic data analysis, helps to place the school enrollment projections in proper context and identifies areas targeted for future development.

1.2 Methodology

The enrollment projections employ the grade-to-grade cohort survival ratio methodology, which is considered a standard for projections of this type. For this report three projections were completed utilizing this method and capturing trends over the course of the last five, ten, and fifteen year periods. Utilizing three different projections reduces the uncertainties inherent within one single methodology. The results of each of the enrollment projections were then analyzed and compared to development trends and socio-economic and demographic data within the Gates Chili School District, as well as to the East Irondequoit, Rush-Henrietta, and Sweet Home School Districts.

Grade-to-grade cohort survival ratios are a commonly employed and widely accepted methodology for projecting school enrollment. The ratio illustrates how many students will attend a given grade compared to how many students were in the previous grade the year before. To calculate the ratios for each grade level, the number of current students in a grade in a given year is divided by the number of students in the preceding grade from the previous year. The ratios are then applied to the live birth figures (for kindergarten enrollment) and student enrollment in the current school year to develop future enrollment projections. The assumption behind this methodology is that historical ratios of student progression from one grade level to the next are indications of how current and future students will also progress through their successive grade levels.

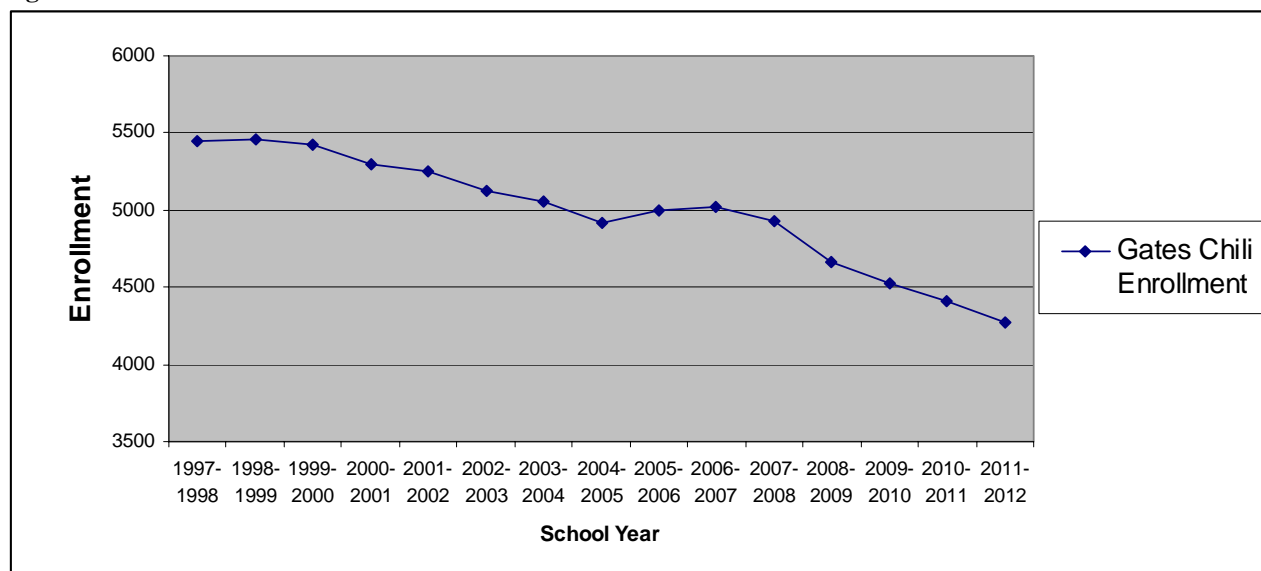
For this study, three sets of average grade-to-grade cohort survival ratios were computed (five-year, ten-year, and fifteen-year) using historical enrollment for the academic years 1997-1998 through 2011-2012, as provided by the Gates Chili School District. To determine the number of students entering kindergarten, ratios between the number of live births and the number of students entering kindergarten five years later were computed for the years 1992 through 2006 to correspond with the incoming kindergarten classes for the academic years 1997-1998 through 2011-2012. These survival ratios along with live birth data for the years 2007-2011 were used to project the five years of future kindergarten enrollment.

Chapter 2 – Historical Enrollment

2.1 Gates Chili School District Historical Enrollment

Total enrollment with the Gates Chili School District over the last 15 school years peaked at 5,454 students during the 1998-1999 school year. Total enrollment then declined each of the next six school years down to 4,915 students in 2004-2005 before increasing slightly to 5,001 for the 2005-2006 school year. Since the 2006-2007 school year, enrollment has steadily declined each year to its current level of 4,277, which is the lowest total enrollment with the Gates Chili School District in the last 15 school years. Figure 1 shows the total enrollment of the Gates Chili School District during these years.

Figure 1: Gates Chili School District Historical K-12 Enrollment

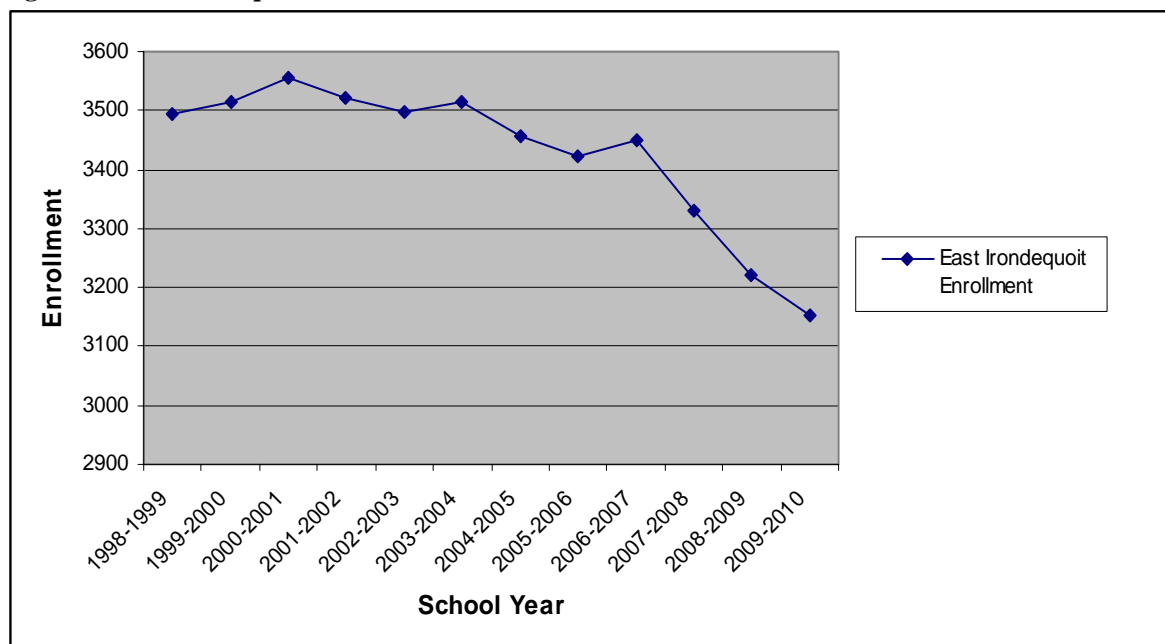


Source: New York State Education Department

2.2 East Irondequoit School District Historical Enrollment

Historical enrollment data was available from the 1998-1999 school year through the 2009-2010 school year. During this period the East Irondequoit School District declined from a total K-12 enrollment of 3,494 in 1998-1999 to 3,153 in 2009-2010 a decline of 9.8%. The peak enrollment during this time period occurred in the 2000-2001 school year with 3,557 students. The lowest enrollment was the 3,153 students in the most recent year of 2009-2010. Figure 2 shows the total K-12 enrollment within the East Irondequoit School District during this period.

Figure 2: East Irondequoit School District Historical K-12 Enrollment

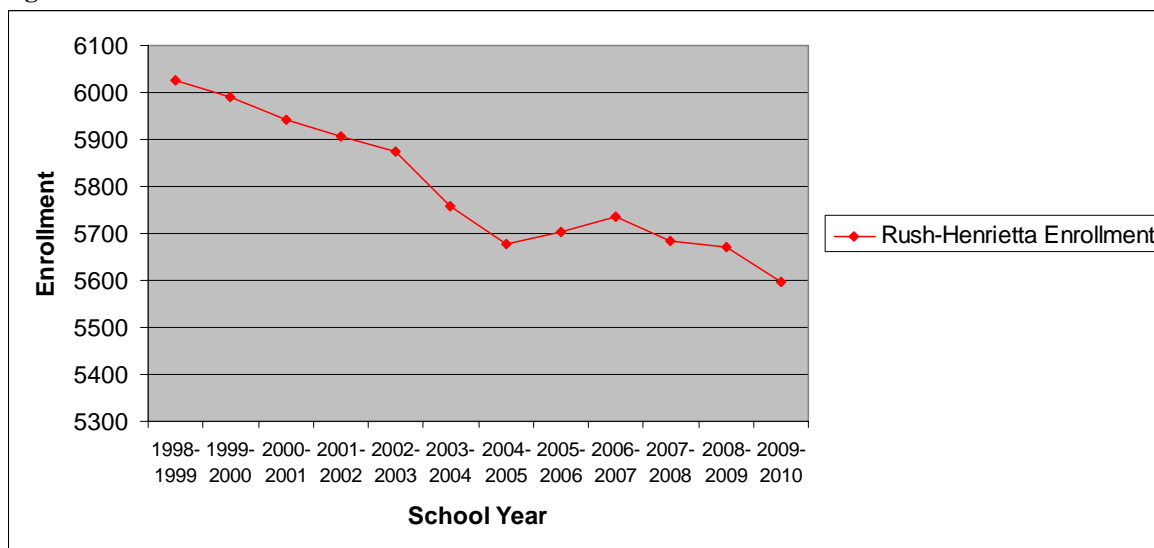


Source: New York State Education Department

2.3 Rush-Henrietta School District Historical Enrollment

Within the Rush-Henrietta School District historical enrollment was available for the school years 1998-1999 through 2009-2010. During this period enrollment within the School District declined 7.2% from 6,027 students in 1998-1999 to 5,596 in 2009-2010. These two school years also represented both the peak enrollment and the lowest enrollment during this period. Figure 3 shows the total K-12 enrollment for the Rush-Henrietta School District during these years.

Figure 3: Rush-Henrietta School District Historical K-12 Enrollment

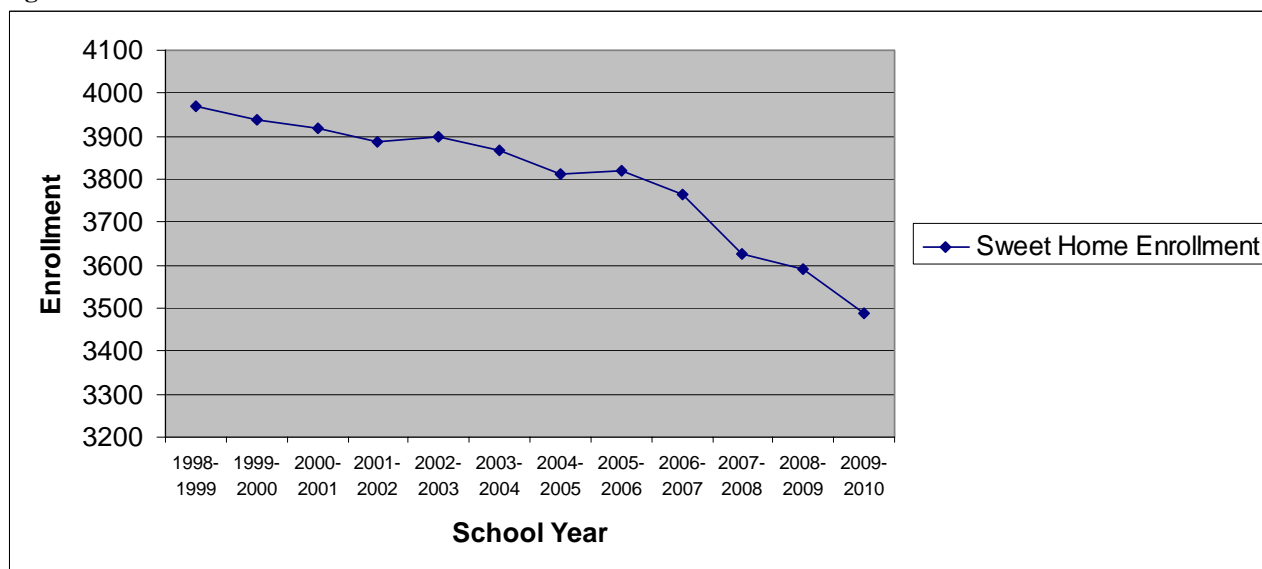


Source: New York State Education Department

2.4 Sweet Home School District Historical Enrollment

Between the school years 1998-1999 and 2009-2010 total K-12 enrollment, within the Sweet Home School District, declined from 3,970 to 3,488 a drop of 12.1%. Similarly to the Rush-Henrietta School District these two school years represented both the peak enrollment and lowest enrollment for the Sweet Home School District during this period. Figure 4 shows the total K-12 enrollment within the Sweet Home School District between 1998-1999 and 2009-2010.

Figure 4: Sweet Home School District Historical K-12 Enrollment



Source: New York State Education Department

Chapter 3 – School District Socio-Economic and Demographic Data

The socio-economic and demographic data analysis section below utilizes U.S. Census data at the school district level for the years 1990, 2000, and 2010. For the years 1990 and 2000 data was obtained from the Census School District Tabulation sponsored by the National Center for Education Statistics. For the year 2010 data was obtained primarily from the 2010 Census demographic profiles at the school district level. Additional information for 2010 was acquired through the 2005-2009 American Community Survey (median household income and language) and 2006-2010 American Community Survey (educational attainment). It is also important to note that the U.S. Census Bureau changed their methodology of collecting information between the 2000 and 2010 Census years and therefore we cannot make direct comparisons between each of the years. None the less the data outlined below helps to show the trends occurring within the Gates Chili; East Irondequoit; Rush-Henrietta; and Sweet Home School Districts. Additional data is found in the Appendix.

3.1 Gates Chili School District Socio-Economic and Demographic Data

1990

The population within the Gates Chili School District in the year 1990 was 34,834. Approximately 24.2% of the population was 19 years or younger with approximately 14.4% of the population aged 65 or older. There were 12,914 households within the Gates Chili School District in 1990. Approximately 93.7% of the School District population was white and 4.6% were black, and 1.3% of the population was Asian or Pacific Islander. An estimated 1.2% of the population is Hispanic.

Of the children living in the Gates Chili School District between the ages of 5 and 17 an estimated 4.2% were living in poverty in 1990. The median family income for the year 1989 was \$76,098¹. Of those aged 5 and older within the Gates Chili School District 87.0% of the population spoke only English, 11.5% of the population spoke another language besides English and also spoke English “very well” or “well” and 1.5% of the population spoke another language besides English and spoke English “not well” or “not at all”.

Of the School District population 20 years old and older 78.8% had at least a high school diploma, 16.0% had at least a bachelor’s degree, and 4.6% of the population had educational attainment beyond a bachelor’s degree. Approximately 98.2% of the housing units within the School District were occupied; of these units 83.4% were owner-occupied and 16.6% were renter-occupied.

2000

The population within the Gates Chili School District in the year 2000 was 34,735 a slight decline of 99 people from 1990. Approximately 25.2% of the population was aged 19 or younger and 17.0% were aged 65 or older. A total of 13,535 households were within the Gates Chili School District in 2000. The racial breakdown of the School District was: 89.2% white; 6.0% black of African-American; and 2.3% Asian alone. An estimated 2.3% of the District population in 2000 was Hispanic or Latino.

¹ Expressed in 2009 dollars.

Of the children aged 5 to 17 living within the District approximately 6.5% were living in poverty. The median family income for the year 1999 was \$63,904². Of those aged 5 and older, 88.3% spoke only English; 9.4% spoke another language in addition to English and also spoke English “very well” or “well”; and 2.3% of the District spoke another language besides English and spoke English “not well” or “not at all.” Of the District population age 25 years old or older, 82.5% had at least a high school diploma, 20.4% had at least a bachelor’s degree, and 6.8% of the population had a master’s degree, professional degree, or doctoral degree. An estimated 97.7% of the housing units within the District were occupied within the year 2000. Of these occupied housing units 82.1% were owner-occupied and 17.9% were renter-occupied.

2010

The Gates Chili School District has a total population of 33,006 and a median age of 43.3. Approximately 22.6% of the population is 19 years of age or younger while approximately 18.1% of the population is aged 65 or older. There were 14,219 households within the Gates Chili School District with an average household size of 2.4 within 2010. Approximately 85.7% of the Gates Chili School District was white, 10.0% was black or African-American, and 2.7% were Asian. An estimated 4.5% of the population in the year 2010 was Hispanic or Latino.

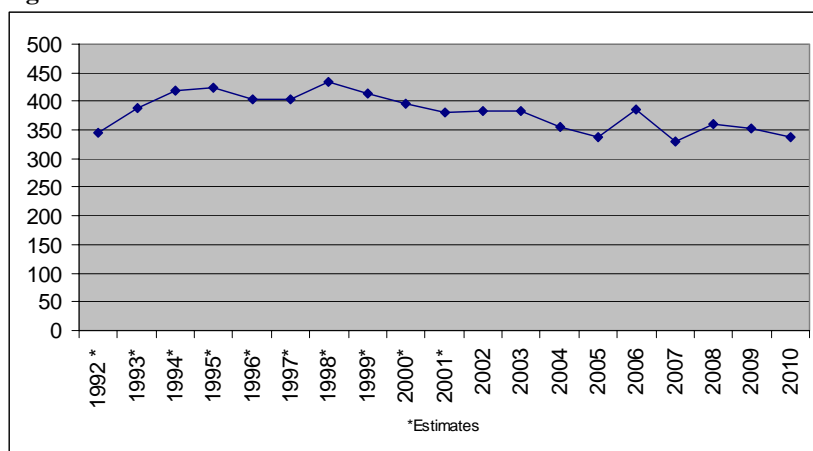
Of children between the ages of 5 and 17 an estimated 11% are living in poverty within the Gates Chili School District. The estimated median income within the Gates Chili School District for the year 2009 was \$53,787. Of those aged 25 or older living within the District 86.7% had at least a high school diploma; 17.9% had at least a bachelor’s degree; and 7.8% of the population had a graduate or professional degree. Of the total Gates Chili School District population aged 5 years and older 89.1% spoke only English; 8.9% spoke another language in addition to English and also spoke English “very well” or “well”; and 2.0% spoke another language besides English and spoke English “not well” or “not at all.” Approximately 96% of the housing within the Gates Chili School District was occupied in the year 2010. Of the occupied housing units an estimated 80% were owner occupied with the remaining 20% occupied by renters.

Gates Chili School District Annual Live Births

Live birth data was gathered for the last 19 years and utilized within the kindergarten enrollment projections. Live birth data at the school district geography has only been available since 2002, as a result for each previous year within the model a formula was utilized to estimate the live births within the Gates Chili School District based upon the births within the Town of Gates and the Town of Chili. This formula consisted of multiplying the live birth data for the Town of Gates and the Town of Chili by the percentage of Town population within the School District. Within the study period live births, within the District, peaked at an estimated 423 in the year 1995 with the lowest level of births occurring in 2007 with 331. While live birth data helps to project future kindergarten enrollment, other factors are also important including in-migration and out-migration of families within the School District. Figure 5 below shows the live births within the school district between 1992 and 2010. The years 1992-2001 are estimated.

² Expressed in 2009 dollars.

Figure 5: Gates Chili School District Live Births



Source: New York State Department of Health

3.2 East Irondequoit School District Socio-Economic and Demographic Data

1990

The East Irondequoit School District includes the eastern portion of the Town of Irondequoit and is located within Monroe County. The population within the East Irondequoit School District in the year 1990 was 28,136. Approximately 19.6% of the population was 19 years or younger with approximately 22.8% of the population aged 65 or older. There were an estimated 11,789 households within the East Irondequoit School District in 1990. The racial breakdown of the School District consisted of approximately 97.6% white and 1.6% black. An estimated 1.5% of the population was Hispanic.

Of the children between the ages of 5 and 17 within the East Irondequoit School District an estimated 6.1% are living in poverty. The median family income for the year 1989 was \$67,638³. Of the population aged 5 years and older within the East Irondequoit School District 85.5% of the population spoke only English; 12.4% of the population spoke another language besides English and also spoke English “very well” or “well”; and 2.1% of the population spoke another language besides English and spoke English “not well” or “not at all”. Of the School District population 20 years old and older 74.6% had at least a high school diploma; 15.3% had at least a bachelor’s degree, and 4.5% of the population had educational attainment beyond a bachelor’s degree. Approximately 97.5% of the housing units were occupied. Of these occupied housing units 76.5% were owner-occupied and 23.5% were renter-occupied.

2000

The population within the East Irondequoit District in the year 2000 was 28,415 a slight decline of 279 people from 1990. Approximately 21.8% of the population was aged 19 or younger and 24.7% were aged 65 or older. A total of 12,310 households were within the East Irondequoit School District in 2000. The racial breakdown consisted of 91.2% white; 4.8% black of African-American; and 4.0% some other race or two or more races. An estimated 3.8% of the District was Hispanic or Latino.

³ Expressed in 2009 Dollars.

Of the children aged 5 to 17 living within the District approximately 9.8% were living in poverty. The median family income for the year 1999 was \$52,629⁴. Of the total District population aged 5 years and older, 86.6% spoke only English; 11.2% spoke another language in addition to English and also spoke English “very well” or “well”; and 2.2% of the District spoke another language besides English and spoke English “not well” or “not at all.” Of the District population age 25 years old or older an estimated 80.8% had at least a high school diploma; 21.0% had at least a bachelor’s degree; and 7.1% of the population had a master’s degree, professional degree, or doctoral degree. An estimated 96.2% of the housing units within the District were occupied in the year 2000 with 74.6% of these occupied units owner-occupied and 25.4% renter-occupied.

2010

The School District had a population in the year 2010 of 27,907 with a median age of 44.3. Approximately 20.5% of the population was 19 years of age or younger and approximately 20.2% was aged 65 or older. There were 13,205 households within the East Irondequoit School District with an average household size of 2.2. The School District was approximately 85.2% white; 10.8% black or African-American; and 1.3% are Asian. An estimated 7.6% of the population was Hispanic or Latino in the year 2010. Poverty is an issue that is faced by an estimated 17.8% of children between the ages of 5 and 17 living within the East Irondequoit School District.

The estimated median income within the East Irondequoit School District for the year 2009 was \$45,362. Amongst the population aged 25 years old or older 85.0% had at least a high school diploma; 13.7% had at least a bachelor’s degree; and 10.4% had a graduate or professional degree. Of the total District population aged 5 years and older, 86.7% spoke only English; 10.8% spoke another language in addition to English and also spoke English “very well” or “well”; and 2.5% of the District spoke another language besides English and spoke English “not well” or “not at all.” Approximately 95% of the housing within the East Irondequoit School District was occupied with approximately 72% are owner-occupied and the remaining 28% occupied by renters.

3.3 Rush-Henrietta School District Socio-Economic and Demographic Data

1990

The Rush-Henrietta School District consists of almost all of the Town of Henrietta, portions of the Town of Rush and the Town of Brighton, and a very small area within the Town of Pittsford. The population within the Rush-Henrietta School District in the year 1990 was 44,100. Approximately 22.8% of the population was 19 years or younger with approximately only 7.5% of the population aged 65 or older. There were 15,377 households within the Rush-Henrietta School District in 1990. Approximately 89.1% of the School District population was white; 6.0% were black; and 4.1% were Asian or Pacific Islander. An estimated 1.7% of the population is Hispanic. Of the children between the ages of 5 and 17 within the Rush-Henrietta School District an estimated 5.3% were living in poverty.

⁴ Expressed in 2009 Dollars.

The median family income for the year 1989 was \$79,951⁵. Of the population aged 5 years and older within the Rush-Henrietta School District 90.8% of the population spoke only English; 8.1% of the population spoke another language besides English and also spoke English “very well” or “well”; and 1.1% of the population spoke another language besides English and spoke English “not well” or “not at all”. Of the School District population 20 years old and older 88.7% had at least a high school diploma; 28.0% of the School District population had at least a bachelor’s degree; and 8.8% of the population had educational attainment beyond a bachelor’s degree. Approximately 95.9% of the housing units were occupied within the District in 1990 with 63.2% of these units owner-occupied and 36.8% renter-occupied.

2000

The population within the Rush-Henrietta School District in the year 2000 was 47,655, an increase of 3,555 people from 1990. Approximately 27.3% of the population was age 19 or younger and 9.4% were age 65 or older. A total of 16,340 households were within the Rush-Henrietta School District in 2000. The racial breakdown consisted of 82.5% white; 7.3% black of African-American; and 6.7% Asian alone. An estimated 2.7% of the District population was Hispanic or Latino.

Of the children aged 5 to 17 living within the District approximately 6.5% were living in poverty. The median family income for the year 1999 was \$64,409⁶. Of the total District population aged 5 years and older, 86.9% spoke only English; 11.8 % spoke another language in addition to English and also spoke English “very well” or “well”; and 1.3% of the District spoke another language besides English and spoke English “not well” or “not at all.” Of the District population age 25 years old or older 89.2% had at least a high school diploma; 33.9% had at least a bachelor’s degree; and 13.4% of the population had a master’s degree, professional degree, or doctoral degree. An estimated 96.1% of the housing units within the District were occupied. Of these occupied housing units 65.3% were owner-occupied and 34.7% were renter-occupied.

2010

The Rush-Henrietta School District had a population of 51,588 with a median age of 30.7 in the year 2010. Approximately 26.3% of the population was 19 years of age or younger and approximately 11.6% was age 65 or older. There were 19,925 households within the Rush-Henrietta School District with an average household size of 2.5. The School District was approximately 80.2% white; 9.8% is Asian; and 8.7% black or African-American within 2010. An estimated 4.1% of the School District population was Hispanic or Latino in 2010.

Of children between the ages of 5 and 17 living within the Rush-Henrietta School District approximately 11.0% were living in poverty within the School District. The estimated median household income within the Rush-Henrietta School District in 2009 was \$56,938. Of the population within the School District aged 25 years old or older 91.5% had at least a high school diploma; 22.8% had at least a bachelor’s degree; and 14.6% of the population had a graduate or professional degree. Of the total District population age 5 years and older 85.2% spoke only

⁵ Expressed in 2009 Dollars.

⁶ Expressed in 2009 Dollars.

English; 12.5% spoke another language in addition to English and also spoke English “very well” or “well”; and 2.3% of the District spoke another language besides English and spoke English “not well” or “not at all.” Approximately 95% of the housing within the Rush-Henrietta School District was occupied with an estimated 64% of these units owner-occupied and the remaining 36% renter- occupied.

3.4 Sweet Homes School District Socio-Economic and Demographic Data

1990

The Sweet Home School District contains a portion of the Town of Amherst, NY and part of the Town of Tonawanda and is located in Erie County, NY. The population within the Sweet Home School District in the year 1990 was 34,029. Approximately 20.0% of the population was 19 years old or younger and approximately 12.6% of the population was aged 65 or older. There were 12,521 households within the Sweet Home School District in 1990. The racial breakdown of the Sweet Home School District consisted of approximately 91.3% white; 4.9% Asian or Pacific Islander; and 3.1% black. An estimated 1.6% of the population was Hispanic in the year 1990.

Of the children between the ages of 5 and 17 within the Sweet Home School District an estimated 9.6% were living in poverty. The median family income for the year 1989 was \$68,738⁷. Of the population aged 5 years and older within the Sweet Home School District 89.3% of the population spoke only English; 9.7% of the population spoke another language besides English and also spoke English “very well” or “well”; and 1.0% of the population spoke another language besides English and spoke English “not well” or “not at all”. Of the School District population 20 years old and older 88.9% had at least a high school diploma; 28.8% of the School District population had at least a bachelor’s degree; and 10.8% of the population had educational attainment beyond a bachelor’s degree. Approximately 96.5% of the housing units were occupied. Of these occupied housing units 57.4% were owner-occupied and 42.6% were renter-occupied.

2000

The population within the Sweet Home School District in the year 2000 was 35,105, an increase of 1,076 people from 1990. Approximately 26.5% of the population was age 19 or younger and 15.2% were age 65 or older. A total of 13,340 households were within the Sweet Home School District in 2000. The racial breakdown of the Sweet Home School District consisted of 86.7% white; 4.9% black of African-American; and 6.7% Asian alone. An estimated 2.2% of the District population was Hispanic or Latino.

Of the children aged 5 to 17 living within the District approximately 11.0% were living in poverty. The median family income for the year 1999 was \$53,408⁸. Of the total District population age 5 years and older, 88.2% spoke only English; 10.7% spoke another language in addition to English and also spoke English “very well” or “well”; and 1.1% of the District spoke another language besides English and spoke English “not well” or “not at all.” Of the District

⁷ Expressed in 2009 Dollars.

⁸ Expressed in 2009 Dollars.

population age 25 years old or older 89.6% had at least a high school diploma; 36.5% had at least a bachelor's degree; and 15.7% of the population had a master's degree, professional degree, or doctoral degree. An estimated 96.3% of the housing units within the District were occupied. Of these occupied housing units 58.5% were owner-occupied and 41.5% were renter-occupied.

2010

The School District had a population of 36,410 with a median age of 29.0. Approximately 24.3% of the population was 19 years of age or younger and approximately 13.9% was age 65 or older. There were 14,459 households within the School District with an average household size of 2.2. The School District was approximately 80.1% white; 11.0% are Asian; and 7.8% black or African-American. Approximately 3.0% of the School District population was Hispanic or Latino.

Of the children between the ages of 5 and 17 living within the district, an estimated 14.5% were living in poverty. The estimated median income within the Sweet Home School District for 2009 was \$43,916. Of the population age 25 years old or older within the District 92.8% had at least a high school diploma; 22.4% had at least a bachelor's degree; and 17.5% of the population had a graduate or professional degree. Of the total District population age 5 years and older, 83.4% spoke only English; 14.8% spoke another language in addition to English and also spoke English "very well" or "well"; and 1.7% of the District spoke another language besides English and spoke English "not well" or "not at all." Approximately 95% of the housing within the Sweet-Home School District was occupied in 2010. Of the occupied housing units an estimated 57% was owner-occupied with the remaining 43% being occupied by renters.

Figure 6: School District Population 1990-2010			
	1990	2000	2010
Gates Chili	34,834	34,734	33,006
East Irondequoit	28,136	28,415	27,907
Rush-Henrietta	44,100	47,655	51,588
Sweet Home	34,029	35,105	36,410

Source: National Center for Educational Statistics and U.S. Census Bureau

Figure 7: School District Median Household Income 1989-2009			
	1989*	1999*	2009
Gates Chili	\$76,098	\$63,904	\$53,787
East Irondequoit	\$67,638	\$52,629	\$45,362
Rush-Henrietta	\$79,951	\$64,409	\$56,938
Sweet Home	\$68,738	\$53,408	\$43,916

*Expressed in 2009 dollars.

Source: National Center for Educational Statistics and U.S. Census Bureau

Figure 8: School District Hispanic or Latino Population 1990-2010			
	1990	2000	2010
Gates Chili	1.2%	2.3%	4.5%
East Irondequoit	1.5%	3.8%	7.6%
Rush-Henrietta	1.7%	2.7%	4.1%
Sweet Home	1.6%	2.2%	3.0%

Source: National Center for Educational Statistics and U.S. Census Bureau

Figure 9: School District Language 1990

	Percentage Speaking English Only	Percentage Speaking Another Language and English “Very Well” or “Well”	Percentage Speaking Another Language and English “Not well” or “Not at All”
Gates Chili	87.0%	11.5%	1.5%
East Irondequoit	85.5%	12.4%	2.1%
Rush-Henrietta	90.8%	8.1%	1.1%
Sweet Home	89.3%	9.7%	1.0%

Source: National Center for Educational Statistics and U.S. Census Bureau

Figure 10: School District Language 2000

	Percentage Speaking English Only	Percentage Speaking Another Language and English “Very Well” or “Well”	Percentage Speaking Another Language and English “Not well” or “Not at All”
Gates Chili	88.3%	9.4%	2.3%
East Irondequoit	86.6%	11.2%	2.2%
Rush-Henrietta	86.9%	11.8%	1.3%
Sweet Home	88.2%	10.7%	1.1%

Source: National Center for Educational Statistics and U.S. Census Bureau

Figure 11: School District Language 2010

	Percentage Speaking English Only	Percentage Speaking Another Language and English “Very Well” or “well”	Percentage Speaking Another Language and English “Not well” or “Not at All”
Gates Chili	89.1%	8.9%	2.0%
East Irondequoit	86.7%	10.8%	2.5%
Rush-Henrietta	85.2%	12.5%	2.3%
Sweet Home	83.4%	14.8%	1.7%

Source: National Center for Educational Statistics and U.S. Census Bureau

Figure 12: School District Educational Attainment 1990

	Percentage at least High School Graduate	Percentage at least Bachelor’s Degree	Percentage education beyond Bachelor’s Degree
Gates Chili	78.8%	16.0%	4.6%
East Irondequoit	74.6%	15.3%	4.5%
Rush-Henrietta	88.7%	28.0%	8.8%
Sweet Home	88.9%	28.8%	10.8%

Source: National Center for Educational Statistics and U.S. Census Bureau

Figure 13: School District Educational Attainment 2000

	Percentage at least High School Graduate	Percentage at least Bachelor's Degree	Percentage Master's, Doctorate or Professional Degree
Gates Chili	82.5%	20.4%	6.8%
East Irondequoit	80.8%	21.0%	7.1%
Rush-Henrietta	89.2%	33.9%	13.4%
Sweet Home	89.6%	36.5%	15.7%

Source: National Center for Educational Statistics and U.S. Census Bureau

Figure 14: School District Educational Attainment 2010

	Percentage at least High School Graduate	Percentage at least Bachelor's Degree	Percentage graduate or Professional Degree
Gates Chili	86.7%	17.9%	7.8%
East Irondequoit	85.0%	13.7%	10.4%
Rush-Henrietta	91.5%	22.8%	14.6%
Sweet Home	92.8%	22.4%	17.5%

Source: National Center for Educational Statistics and U.S. Census Bureau

District Demographic Recap

Between 1990 and 2000 the Gates Chili and East Irondequoit School Districts saw slight declines in their estimated population of 1,828 and 229 respectively. During this same period the population within the Rush-Henrietta School District increased approximately 7,488 and the population within the Sweet Home School District increased by 2,384.

The median household incomes, as expressed in 2009 dollars, declined amongst the population in all four districts. Each of the School Districts become more diverse during this time period as well and the percentage of their Hispanic/Latino populations increased for each of the four districts. Educational attainment within the four school districts was also strong with each of the districts having at least 85.0% of their populations age 25 or older with at least a high school diploma as of 2010. Rush-Henrietta and Sweet Home School Districts also had a large percentage of their population with graduate or professional degrees; 14.6% and 17.5% respectively within 2010.

The peak population of school aged children living with each of the Districts seems to have occurred sometime between the year 2000 and 2010. Each of the four school districts saw an increase in the percentage of their population 19 years of age or younger between 1990 and 2000. All four however also saw declines in the percentage of their population 19 years of age or younger between 2000 and 2010. This coincides with the historical school enrollment number for each of the school districts, which all seemed to peak at or around the year 2000 with their lowest enrollment typically in the most recently available school year.

Chapter 4 – Elementary School District Socio-Economic and Demographic Data

Analysis of the four elementary school districts within the Gates Chili School District (Armstrong; Brasser; Disney; and Paul Road) was limited due to the inconsistency in data between the 1990, 2000, and 2010 Censuses. In order to obtain data at the sub-district level Census block data was acquired for all the blocks within each sub-district and summed to determine the totals within each sub-district. Many of the blocks within the Gates Chili School District fall into more than one of the sub-districts. In these cases the data for that particular block was attributed to both of the sub-districts, since it was impossible to know the exact proportion of residents in one sub-district or another. As a result the totals of the sub-district data are skewed because of the double counted blocks. For this reason our sub-district analysis focused on percentages rather than raw numbers. The map in Figure 15 shows the Gates Chili School District with each of the four elementary school sub-districts.

4.1 Armstrong Elementary School District Socio-Economic and Demographic Data

1990

Based upon the 1990 Census the Armstrong Elementary School District contained approximately 20.0% of the overall Gates Chili School District population. The Armstrong sub-district was approximately 93.9% white; 3.4% black; and 1.8% Asian or Pacific Islander. Approximately 1.4% of the sub-district population was Hispanic in 1990. An estimated 21.4% of the sub-district was under the age of 18 and 13.0% were 65 years of age or older. The housing units within the sub-district were 98.9% occupied according to the 1990 Census.

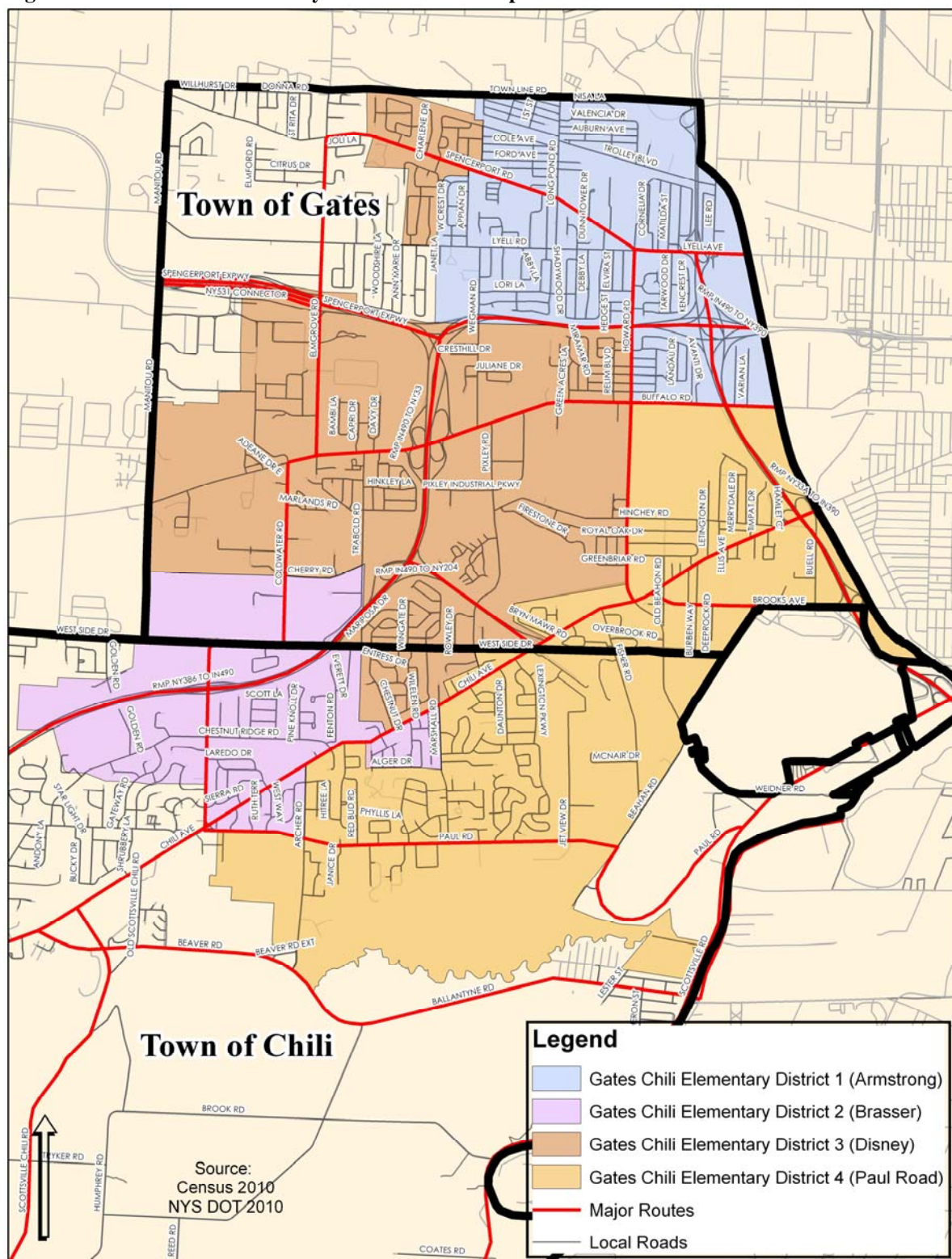
2000

In 2000 the Armstrong Elementary School District contained approximately 25.7% of the overall Gates Chili School District population. The sub-district was approximately 88.7% white; 5.9% black or African-American; and 2.3% Asian alone. Approximately 3.3% of the Armstrong District population was Hispanic or Latino in 2000. An estimated 22.4% of the Armstrong Elementary District was under the age of 18 and 18.5% were age 65 or older in the year 2000. The housing units within Armstrong were 97.5% occupied in 2000.

2010

In 2010 the Armstrong Elementary School District contained an estimated 27.7% of the overall Gates Chili School District population. The sub-district was approximately 83.7% white; 10.6% black or African-American; and 3.6% Asian alone. Approximately 6.6% of the Armstrong Elementary School District population was Hispanic or Latino in 2010. An estimated 19.5% of the sub-district was younger than 18 and 19.8% were age 65 or older in the year 2010. The housing units within the Armstrong Elementary School District were 95.8% occupied in the year 2010.

Figure 15: Gates Chili Elementary School Districts Map



Source: Created by G/FLRPC; Data from U.S. Census Bureau and NYS DOT

4.2 Brasser Elementary School District Socio-Economic and Demographic Data

1990

Based upon the 1990 Census the Brasser Elementary School District contained approximately 19.5% of the overall Gates Chili School District population. The Brasser sub-district was approximately 91.0% white; 6.4% black; and 1.9% Asian or Pacific Islander. Approximately 2.5% of the sub-district population was Hispanic in 1990. An estimated 23.9% of the Brasser sub-district was under the age of 18 and 11.2% were 65 years of age or older. The housing units within the sub-district were 98.4% occupied according to the 1990 Census.

2000

In 2000 the Brasser Elementary School District contained approximately 16.2% of the overall Gates Chili School District population. The sub-district was approximately 93.0% white; 4.4% black or African-American; and 0.8% Asian alone. Approximately 1.7% of the Brasser sub-district population was Hispanic or Latino in 2000. An estimated 23.7% of the Brasser Elementary District was under the age of 18 and 14.5% were age 65 years old or older in the year 2000. The housing units within Brasser were 97.1% occupied in 2000.

2010

In 2010 the Brasser Elementary School District contained an estimated 16.0% of the overall Gates Chili School District population. The sub-district was approximately 91.0% white; 6.0% black or African-American; and 2.3% Asian alone. An estimated 2.4% of the sub-district population was Hispanic or Latino. An estimated 19.8% of the sub-district was younger than 18 and 16.9% were 65 years old or older in the year 2010. The housing units within the Brasser Elementary School District were approximately 95.4% occupied in the year 2010.

4.3 Disney Elementary School District Socio-Economic and Demographic Data

1990

Based upon the 1990 Census the Disney Elementary School District contained approximately 39.7% of the overall Gates Chili School District population. The Disney sub-district was approximately 90.5% white; 6.0% black; and 2.3% Asian or Pacific Islander. An estimated 2.6% of the sub-district population was Hispanic in 1990. An estimated 24.2% of the sub-district was under the age of 18 and 9.6% were 65 years of age or older. The housing units within the sub-district were estimated to be 97.6% occupied according to the 1990 Census.

2000

In 2000 the Disney Elementary School District contained approximately 30.4% of the overall Gates Chili School District population. The sub-district was approximately 88.8% white, 6.7% black or African-American, and 1.8% Asian alone. Approximately 3.0% of the sub-district is Hispanic or Latino. An estimated 21.5% of the Disney Elementary District was under the age of 18 and 17.4% were aged 65 and older in the year 2000. The housing units within Disney were 97.3% occupied in 2000.

2010

In 2010 the Disney Elementary School District contained an estimated 28.0% of the overall Gates Chili School District population. The sub-district was approximately 87.0% white; 9.3%

black or African-American; and 2.3% Asian alone within 2010. Approximately 4.1% of the Disney Elementary School District population was Hispanic or Latino. An estimated 18.6% of the sub-district was younger than 18 and 20.5% were 65 years old or older in the year 2010. The housing units within the Disney Elementary School District were 95.8% occupied in the year 2010.

4.4 Paul Road Elementary School District Socio-Economic and Demographic Data

1990

Based upon the 1990 Census the Paul Road Elementary School District contained approximately 20.8% of the overall Gates Chili School District population. The Paul Road sub-district was approximately 92.0% white; 5.7% black; and 1.8% Asian or Pacific Islander. Approximately 2.3% of the sub-district population was Hispanic in 1990. An estimated 21.9% of the sub-district was under the age of 18 and 12.5% were 65 years of age or older. The housing units within the sub-district were 97.1% occupied according to the 1990 Census.

2000

In 2000 the Paul Road Elementary School District contained approximately 27.6% of the overall Gates Chili School District population. The sub-district was approximately 88.0% white; 8.7% black or African-American; and 1.3% Asian alone. Approximately 2.1% of the sub-district population was Hispanic or Latino in 2000. An estimated 25.1% of the Paul Road Elementary District was under the age of 18 and 15.5% were 65 years old or older in the year 2000. The housing units within Paul Road during 2000 were 97.9% occupied.

2010

In 2010 the Paul Road Elementary School District contained an estimated 29.3% of the overall Gates Chili School District population. The sub-district was approximately 83.5% white; 12.8% black or African-American; and 2.5% Asian alone. Approximately 3.5% of the Paul Road Elementary School District population was Hispanic or Latino in 2010. An estimated 22.4% of the sub-district was younger than 18 and 14.4% were age 65 or older in the year 2010. The housing units within the Paul Road Elementary School District were 97.0% occupied in the year 2010.

Figure 16: Elementary School District Percentage of Total Gates Chili School District Population 1990-2010			
	1990	2000	2010
Armstrong	20.0%	25.7%	27.7%
Brasser	19.5%	16.2%	16.0%
Disney	39.7%	30.4%	28.0%
Paul Road	20.8%	27.6%	29.3%

Source: U.S. Census Bureau

Figure 17: Elementary School District Percentage Hispanic or Latino Population 1990-2010

	1990	2000	2010
Armstrong	1.4%	3.3%	6.6%
Brasser	2.5%	1.7%	2.4%
Disney	2.6%	3.0%	4.1%
Paul Road	2.3%	2.1%	3.5%

Source: U.S. Census Bureau

Figure 18: Elementary School District Percentage Under aged 18 1990-2010

	1990	2000	2010
Armstrong	21.4%	22.4%	19.5%
Brasser	23.9%	23.7%	19.8%
Disney	24.2%	21.5%	18.6%
Paul Road	21.9%	25.1%	22.4%

Source: U.S. Census Bureau

Figure 19: Elementary School District Percentage 65 and older 1990-2010

	1990	2000	2010
Armstrong	13.0%	18.5%	19.8%
Brasser	11.2%	14.5%	16.9%
Disney	9.6%	17.4%	20.5%
Paul Road	12.5%	15.5%	14.4%

Source: U.S. Census Bureau

Sub-district Demographic Recap

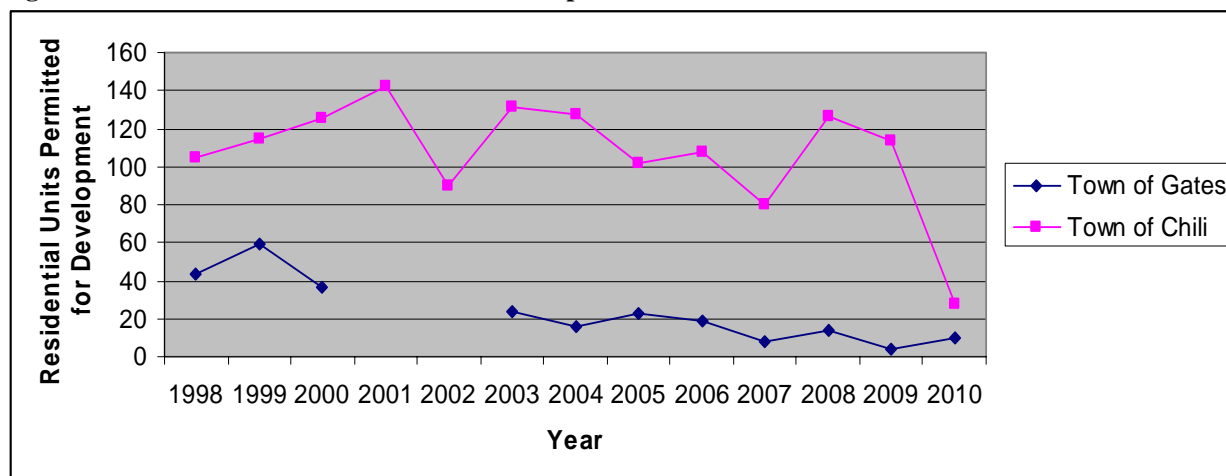
Population estimates for the four elementary school districts show that population has shifted between sub-districts between 1990 and 2010. In the year 1990 the largest Elementary School District was Disney with 39.7% of the Gates Chili District population. As of 2010 Armstrong, Disney and Paul Road have similar population numbers between 27-30% of the total Gates Chili School District enrollment. The elementary school districts are also becoming more diverse with Armstrong, Disney, and Paul Road all increasing their Hispanic/Latino populations.

Each of the four elementary school districts saw an increase in the percentage of their sub-district aged 65 and over between 1990 and 2010. The Paul Road Elementary School District was the only sub-district to experience an increase in the percentage of their population under the age of 18 during this period. These two age cohort tables indicate that the population within the elementary school sub-districts is aging and there has been a decline in families with school aged children residing within the Gates Chili School District. These population shifts correlate with the decline in school enrollment, which is discussed in Chapter 6.

Chapter 5 – Residential Development Activity

Residential building permit data was collected from the Towns of Gates and the Town of Chili for the years 1998-2010⁹ to determine the total amount of residential units receiving permits for development. For the Town of Gates no data was available for the years 2001 and 2002. Within this period the residential units permitted for development in the Town of Chili peaked at 142 in the year 2001, but has since declined to its lowest point of 28 in 2010. For the Town of Gates, based on the available data, the peak residential units permitted for development was 59 in 1999. The lowest total within this period for the Town of Gates was 4 in the year 2009. Figure 20 shows the total residential units permitted for development with each town over the course of the 13 year period.

Figure 20: Residential Units Permitted for Development Town of Gates and Town of Chili



Source: G/FLRPC Land Use Monitoring Report 1998-2010.

5.1 Town of Gates Residential Building Activity

Within the Town of Gates there are several areas within the Gates Chili School District where residential development may occur. In the northeast portion of the Town (shown on Figure 21 as area 1), north of the Erie Canal and west of I-390, excavation has started on approximately 120 units of residential development; about 10% of the units are targeted to families with the remaining units being marketed to seniors.

Two developments have also received approval for the construction of residential units along Buffalo Road in the Western portion of the Town. One of the two development proposals, shown on Figure 21 as area 2, calls for 250 residential units and would be located south of Buffalo Road to the east of Westview Commons Road. The other development proposal, shown on Figure 21 as area 3, is estimated for 120 units and would be located on the north side of Buffalo Road to the east of Manitou Road. It remains to be seen if these proposals are ultimately developed and if they meet the scale that is envisioned. To date no development has occurred on either proposal and the current economic climate may continue to delay implementation.

⁹ Acquired from the annual G/FLRPC Land Use Monitoring Report for the years 1998-2010.

Two areas are also being looked at for possible residential development in the future; one of these areas, shown on Figure 21 as area 4, is on the southeastern portion of the Town and is bordered by Lettington Drive to the east; Hinchey Road to the south; Howard Road to the west; and the railroad tracks to the north. The second area for potential future development, shown as area 5 on Figure 21, is in the southwestern portion of Town and is bordered by Trabold Drive to the east; Westside Drive to the south; Coldwater Road to the west; and the railroad tracks to the north. The map in Figure 21 shows the areas where potential residential development may occur in the Town of Gates.

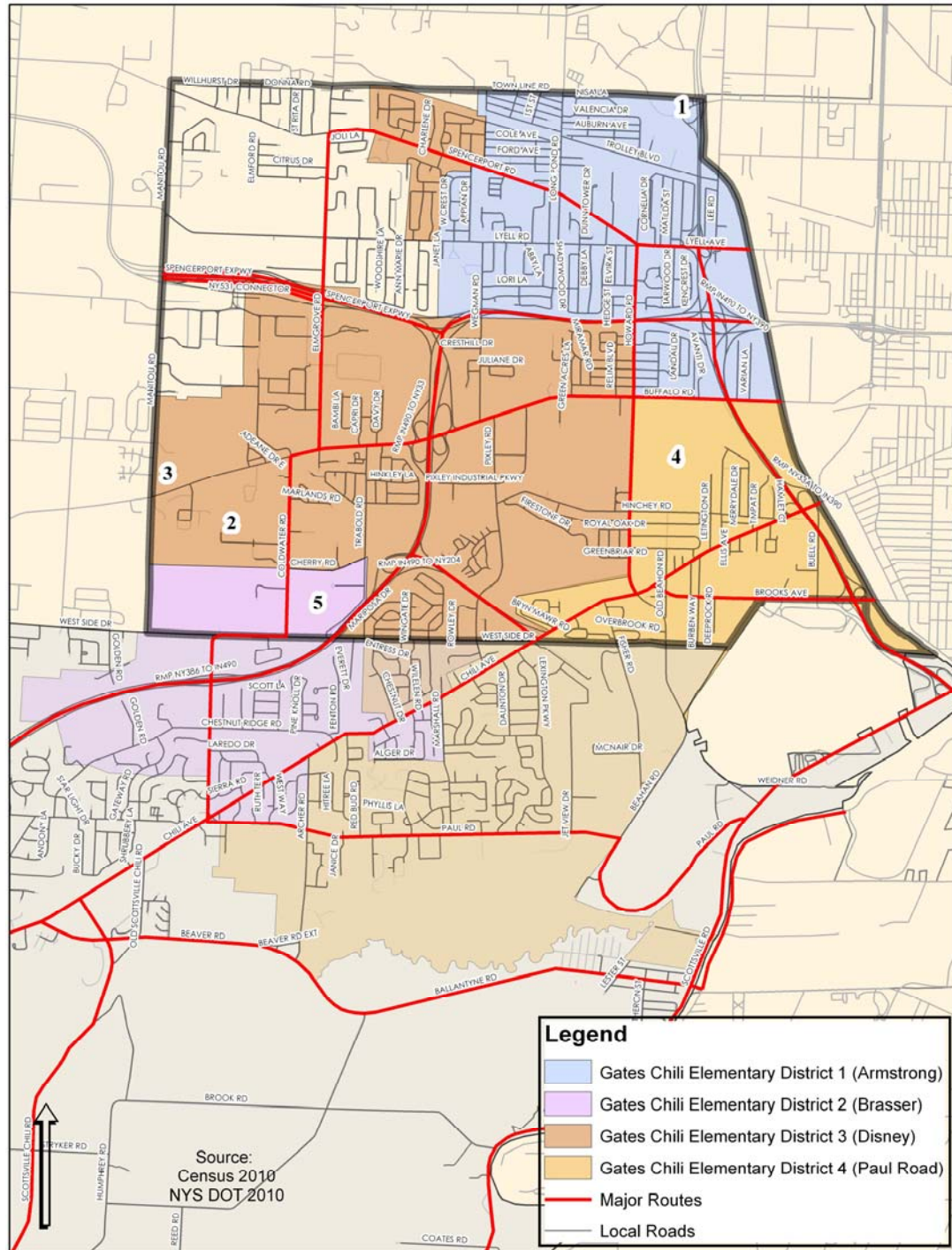
5.2 Town of Chili Residential Building Activity

Within the Town of Chili no major residential development projects are anticipated within the Gates Chili School District. Two areas, however, may see some small growth in residential development. The first area, shown on Figure 22 as area 1, is just east of the Wegman's plaza, south of Paul Road and west of Archer Road, where the Greenwood Townhome project is underway. While the project involves mainly commercial development there is a residential component as well, which consists of both senior-housing and a portion devoted to single-family homes.

The other area in the Town of Chili, within the Gates Chili School District, with the potential for residential development is north of I-490 along Golden Road, shown on Figure 22 as area 2. A subdivision has received approval for this area, but as of yet no work has been completed. The delay in the construction of the subdivision has been attributed to the current economic climate and it may be some time before the project gets off the ground, if at all. The remainder of the Town of Chili within the Gates Chili School District is fairly well built out and there are limited opportunities for residential development.

The map within Figure 22 shows the areas where potential residential development may occur in the Town of Gates.

Figure 21: Town of Gates Areas for Possible Residential Development



Source: Created by G/FLRPC; Data from U.S. Census Bureau and NYS DOT and Town of Gates

Chapter 6 – Gates Chili School Enrollment Projections

6.1 Five-Year Average Survival Cohort Enrollment Projections

The five-year enrollment projections utilized the average grade-to-grade survival cohort over the previous five years. Live birth data was utilized to project the kindergarten enrollment based upon the survival ratio of live births to kindergarten enrollment. The total enrollment for the Gates Chili School District is projected to be 3,782 students during the 2016-2017 school year based upon the five-year survival ratio. This would represent a decline in enrollment of approximately 11.6% from the current 2011-2012 school year. The break down of the projection for 2016-2017 by grades is as follows: 1,598 students in grades K-5; 887 students in grades 6-8; and 1,297 students in grades 9-12.

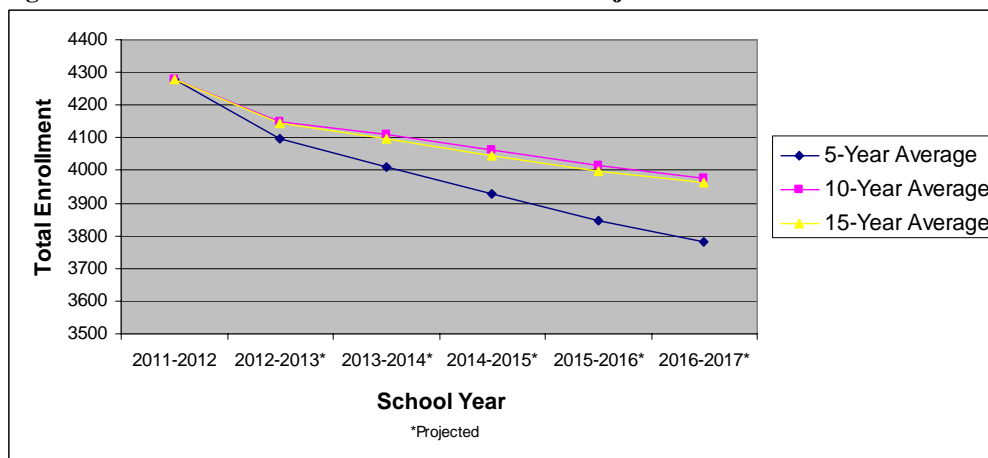
6.2 Ten-Year Average Survival Cohort Enrollment Projections

The ten-year enrollment projections utilized the average grade-to-grade survival cohort over the previous ten years. Live birth data was utilized to project the kindergarten enrollment based upon the survival ratio of live births to kindergarten enrollment. Total enrollment for the Gates Chili School District is projected to be 3,974 students during the 2016-2017 school year based upon the ten-year survival ratio. This would represent a decline in enrollment of approximately 7.1% from the current 2011-2012 school year. The break down of the projection for 2016-2017 by grades is as follows: 1,623 students in grades K-5; 943 students in grades 6-8; and 1,408 students in grades 9-12. It is also important to note that prior to 2004 the Gates Chili School District utilized a category of ungraded to classify some students, these students not assigned to a grade were not captured within the Ten-Year Average Survival Cohort Enrollment Projections.

6.3 Fifteen-Year Average Survival Cohort Enrollment Projections

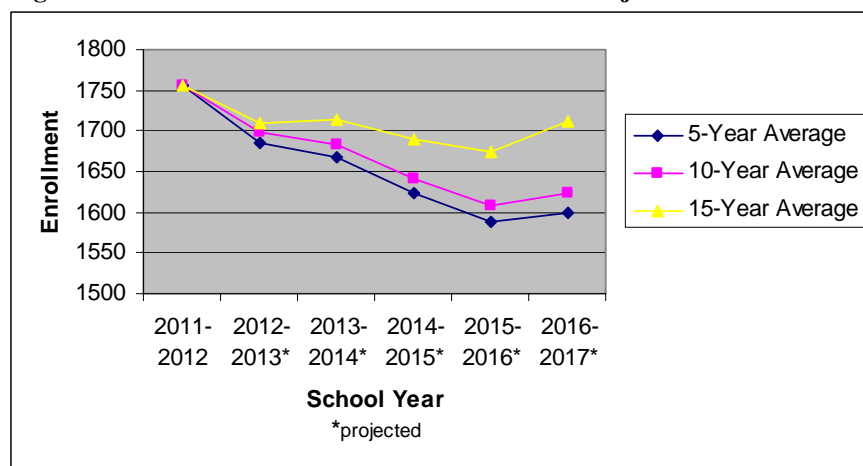
The fifteen-year enrollment projections utilized the average grade-to-grade survival cohort over the previous fifteen years. Live birth data was utilized to project the kindergarten enrollment based upon the survival ratio of live births to kindergarten enrollment. Total enrollment for the Gates Chili School District is projected to be 3,963 students during the 2016-2017 school year based upon the fifteen-year survival ratio. This would represent a decline in enrollment of approximately 7.3% from the current 2011-2012 school year. The break down of the projection for 2016-2017 by grades is as follows: 1,711 students in grades K-5; 909 students in grades 6-8; and 1,342 students in grades 9-12. It is also important to note that prior to 2004 the Gates Chili School District utilized a category of ungraded to classify some students, these students not assigned to a grade were not captured within the Fifteen-Year Average Survival Cohort Enrollment Projections.

Figure 23: Gates Chili School District Enrollment Projections Total Enrollment



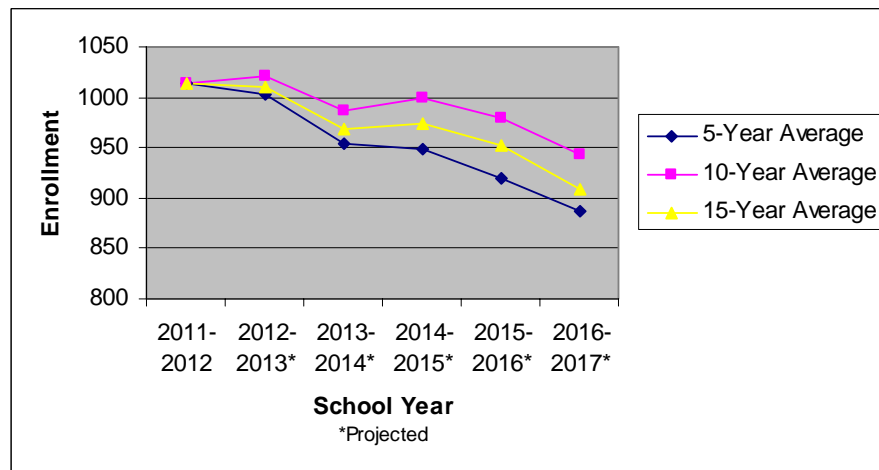
Source: G/FLRPC

Figure 24: Gates Chili School District Enrollment Projections Grades K-5



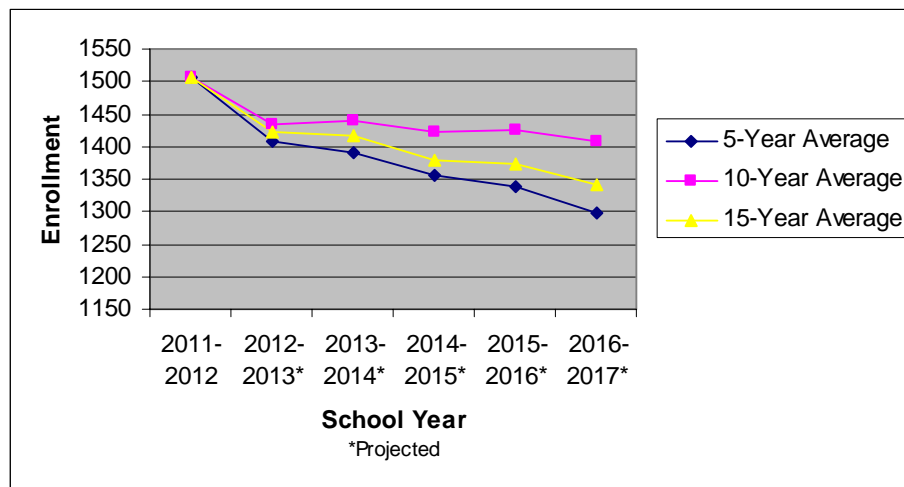
Source: G/FLRPC

Figure 25: Gates Chili School District Enrollment Projections Grades 6-8



Source: G/FLRPC

Figure 26: Gates Chili School District Enrollment Projections Grades 9-12



Source: G/FLRPC

School Enrollment Projects Recap

The Gates Chili School District, similar to the other three school districts within Western New York that were analyzed, is experiencing a decline in school enrollment. In the case of Gates Chili we project that this decline will continue at least through the 2016-2017 school year based upon our five-year, ten-year, and fifteen-year enrollment projections.

The decline in school enrollment coincides with the decline in population within the school district from 1990-2010. The downward trend in residential building permits being issued within both the Town of Gates and the Town of Chili indicates that the current residential building stock is meeting the demands of the housing market and that there is no immediate pressure for new development. This is also evident in the slow pace of construction, or lack of construction in some cases, amongst the residential development projects approved within the Town of Gates and the Town of Chili. It is also the case, especially within the Town of Chili, that the Gates Chili School District is predominately built out and that there are limited opportunities for future residential development. As a result of these trends it is unlikely that the decline in school enrollment will reverse in the short-term.

Appendix A Gates Chili School District Birth to Kindergarten Survival Cohort

Year of Birth	Number of Live Births	Year to Enter Kindergarten	Kindergarten Enrollment	Birth to Kindergarten Survival Ratio
1992	345	1997	381	1.10
1993	388	1998	399	1.03
1994	419	1999	352	0.84
1995	423	2000	346	0.82
1996	403	2001	307	0.76
1997	405	2002	295	0.73
1998	433	2003	301	0.70
1999	415	2004	317	0.76
2000	395	2005	295	0.75
2001	381	2006	309	0.81
2002	384	2007	296	0.77
2003	384	2008	309	0.80
2004	355	2009	291	0.82
2005	337	2010	248	0.74
2006	385	2011	241	0.63

0.7514 Five Year Average Cohort Birth to Kindergarten

0.7504 Ten Year Average Cohort Birth to Kindergarten

0.8021 Fifteen Year Average Cohort Birth to Kindergarten

Appendix B Gates Chili School District 5-Year Enrollment Projections

2011-2012 school year is under 2011 column

Grade	2006	2007	2008	2009	2010	2011	Grade	5 Yr. Cohort Average	2011	2012	2013	2014	2015	2016	Grade
K	309	296	309	291	248	241	K		241	249	271	266	254	266	K
								1.05							
1	335	342	307	313	293	269	1		269	253	261	285	279	267	1
								0.99							
2	345	342	318	304	312	300	2		300	267	251	259	283	277	2
								1.00							
3	328	342	321	323	308	321	3		321	299	266	250	258	282	3
								1.00							
4	334	338	335	325	327	300	4		300	322	300	267	251	259	4
								0.99							
5	355	334	323	339	319	325	5		325	297	318	296	264	248	5
								0.99							
6	379	344	329	317	347	320	6		320	323	294	316	294	262	6
								1.04							
7	447	407	350	327	339	356	7		356	332	334	305	327	305	7
								0.98							
8	436	425	387	343	336	338	8		338	349	325	328	299	321	8
								1.07							
9	467	473	435	415	373	370	9		370	363	375	349	352	321	9
								0.95							
10	443	440	436	421	387	368	10		368	352	345	356	332	335	10
								0.97							
11	461	435	396	432	427	364	11		364	355	339	333	344	321	11
								0.93							
12	380	416	413	372	394	405	12		405	339	331	316	310	320	12
K-5	2006	1994	1913	1895	1807	1756	K-5		1756	1686	1667	1623	1589	1598	K-5
6-8	1262	1176	1066	987	1022	1014	6-8		1014	1003	954	948	920	887	6-8
9-12	1751	1764	1680	1640	1581	1507	9-12		1507	1408	1390	1355	1338	1297	9-12
TOTAL	5019	4934	4659	4522	4410	4277	Total		4277	4098	4011	3926	3847	3782	TOTAL
	2006	2007	2008	2009	2010	2011		5 Yr. Cohort Average	2011	2012	2013	2014	2015	2016	

Appendix C Gates Chili School District 10-Year Enrollment Projections

2011-2012 school year is under 2011 column

Grade	2001	2002	2003	2004	2005	2006	2007	2008	2009	2010	2011	Grade	10 Yr. Cohort Average	2011	2012	2013	2014	2015	2016	Grade
K	307	295	301	317	295	309	296	309	291	248	241	K		241	248	271	266	254	266	K
													1.08							
1	381	343	309	335	355	335	342	307	313	293	269	1		269	260	268	292	286	273	1
													0.97							
2	353	349	315	307	331	345	342	318	304	312	300	2		300	262	253	261	285	279	2
													1.00							
3	427	347	340	320	316	328	342	321	323	308	321	3		321	299	262	253	261	284	3
													1.01							
4	339	385	330	369	343	334	338	335	325	327	300	4		300	323	302	264	255	263	4
													1.01							
5	418	346	368	386	374	355	334	323	339	319	325	5		325	304	328	306	267	258	5
													1.01							
6	372	408	341	407	424	379	344	329	317	347	320	6		320	330	308	333	310	271	6
													1.04							
7	393	380	389	402	429	447	407	350	327	339	356	7		356	334	344	322	347	324	7
													1.00							
8	386	365	373	444	417	436	425	387	343	336	338	8		338	356	335	345	322	348	8
													1.09							
9	372	402	402	431	473	467	473	435	415	373	370	9		370	367	387	363	374	350	9
													0.97							
10	396	349	372	437	440	443	440	436	421	387	368	10		368	357	354	374	351	361	10
													0.99							
11	388	380	345	404	423	461	435	396	432	427	364	11		364	363	353	350	369	346	11
													0.95							
12	347	364	389	356	381	380	416	413	372	394	405	12		405	345	345	335	332	350	12
Ungraded	369	411	483																	
K-5	2225	2065	1963	2034	2014	2006	1994	1913	1895	1807	1756	K-5		1756	1697	1683	1641	1608	1623	K-5
6-8	1151	1153	1103	1253	1270	1262	1176	1066	987	1022	1014	6-8		1014	1020	987	999	980	943	6-8
9-12	1503	1495	1508	1628	1717	1751	1764	1680	1640	1581	1507	9-12		1507	1433	1439	1422	1426	1408	9-12
TOTAL	5248	5124	5057	4915	5001	5019	4934	4659	4522	4410	4277	Total		4277	4151	4110	4062	4013	3974	TOTAL

Appendix D Gates Chili School District 15-Year Enrollment Projections

Page 1 of 2

2011-2012 school year is under 2011 column

Grade	1996	1997	1998	1999	2000	2001	2002	2003	2004	2005	2006	2007	2008	2009	2010	2011	Grade
K	387	381	399	352	346	307	295	301	317	295	309	296	309	291	248	241	K
1	398	415	432	466	396	381	343	309	335	355	335	342	307	313	293	269	1
2	398	395	404	363	415	353	349	315	307	331	345	342	318	304	312	300	2
3	405	400	392	410	371	427	347	340	320	316	328	342	321	323	308	321	3
4	361	403	406	389	413	339	385	330	369	343	334	338	335	325	327	300	4
5	405	360	403	397	379	418	346	368	386	374	355	334	323	339	319	325	5
6	398	420	365	404	397	372	408	341	407	424	379	344	329	317	347	320	6
7	431	403	405	354	402	393	380	389	402	429	447	407	350	327	339	356	7
8	378	419	391	398	354	386	365	373	444	417	436	425	387	343	336	338	8
9	390	372	449	450	421	372	402	402	431	473	467	473	435	415	373	370	9
10	375	368	332	373	412	396	349	372	437	440	443	440	436	421	387	368	10
11	343	377	368	347	362	388	380	345	404	423	461	435	396	432	427	364	11
12	326	325	350	348	325	347	364	389	356	381	380	416	413	372	394	405	12
Ungraded	368	412	359	373	308	369	411	483									
K-5	2354	2354	2436	2377	2320	2225	2065	1963	2034	2014	2006	1994	1913	1895	1807	1756	K-5
6-8	1207	1242	1161	1156	1153	1151	1153	1103	1253	1270	1262	1176	1066	987	1022	1014	6-8
9-12	1434	1442	1499	1518	1520	1503	1495	1508	1628	1717	1751	1764	1680	1640	1581	1507	9-12
TOTAL	5363	5450	5455	5424	5301	5248	5124	5057	4915	5001	5019	4934	4659	4522	4410	4277	Total
	1996	1997	1998	1999	2000	2001	2002	2003	2004	2005	2006	2007	2008	2009	2010	2011	

Appendix D Gates Chili School District 15-Year Enrollment Projections

Page 2 of 2

2011-2012 school year is under 2011 column

Grade	15 Yr. Cohort Average	2011	2012	2013	2014	2015	2016	Grade
K		241	265	290	284	271	284	K
	1.09							
1		269	263	290	316	310	296	1
	0.96							
2		300	257	252	277	302	296	2
	1.00							
3		321	301	258	252	278	303	3
	1.00							
4		300	321	301	258	252	278	4
	1.01							
5		325	302	323	303	260	254	5
	1.01							
6		320	329	306	327	306	263	6
	1.02							
7		356	328	337	313	335	314	7
	0.99							
8		338	354	326	335	311	333	8
	1.08							
9		370	364	381	351	361	335	9
	0.95							
10		368	350	344	360	332	341	10
	0.99							
11		364	364	346	341	356	328	11
	0.95							
12		405	345	345	328	323	338	12
K-5		1756	1710	1713	1690	1673	1711	K-5
6-8		1014	1010	968	975	952	909	6-8
9-12		1507	1423	1416	1380	1372	1342	9-12
Total		4277	4143	4098	4045	3998	3963	TOTAL
	15Yr. Ave.	2011	2012	2013	2014	2015	2016	

Appendix E School District Demographic Data 1990

Page 1 of 3

	Gates Chili	East Irondequoit	Rush Henrietta	Sweet Home
Population	34,834	28,136	44,100	34,029
Households	12,914	11,789	15,377	12,521
Total Population 19 years and younger	8434	5517	10045	6807
Percentage Population 19 years and younger	24.2%	19.6%	22.8%	20.0%
Total Population 65 years and older	5027	6412	3296	4290
Percentage Population 65 years and older	14.4%	22.8%	7.5%	12.6%
Under 5 years	2,099	1,578	2,683	1,811
5 years	415	225	629	283
6 to 11 years	2,633	1,637	3,102	1,952
12 to 17 years	2,406	1,570	2,452	2,047
18 to 24 years	3,109	1,995	6,302	3,171
25 to 34 years	5,390	4,363	8,321	5,299
35 to 44 years	5,022	4,244	6,288	4,421
45 to 54 years	4,326	2,319	4,023	3,117
55 to 59 years	1,829	1,319	1,706	1,755
60 to 64 years	1,956	1,913	1,666	1,602
65 to 74 years	2,971	3,830	2,312	2,659
75 years and over	2,056	2,582	984	1,631
Universe: Persons	34,472	28,159	44,365	33,787
White	32,310	27,471	39,548	30,838
Black	1,576	451	2,657	1,041
American Indian, Eskimo, or Aleut	48	54	104	127
Asian or Pacific Islander	436	59	1,805	1,647
Other race	102	124	251	134
Percentage White	93.7%	97.6%	89.1%	91.3%
Percentage Black	4.6%	1.6%	6.0%	3.1%
Percentage American Indian, Eskimo, or Aleut	0.1%	0.2%	0.2%	0.4%
Percentage Asian or Pacific Islander	1.3%	0.2%	4.1%	4.9%
Percentage Other Race	0.3%	0.4%	0.6%	0.4%

Appendix E School District Demographic Data 1990

Page 2 of 3

	Gates Chili	East Irondequoit	Rush Henrietta	Sweet Home
Universe: Persons of Hispanic Origin Total	421	425	736	552
Percentage of Population of Hispanic Origin	1.2%	1.5%	1.7%	1.6%
Universe: Persons 20 years and over	25,919	22,609	32,324	25,112
Less than 9th Grade Total	1,677	2,171	968	917
9th to 12th grad total	3,807	3,580	2,674	1,872
High School Graduate	9,097	7,423	8,113	6,815
Some College, No Degree Total	4,522	3,857	7,295	6,075
Associate degree, occupational program Total:	1,093	1,123	1,541	894
Associate degree, academic program Total:	1,573	987	2,691	1,320
Bachelor's Degree Total:	2,956	2,460	6,201	4,518
Master's Degree	1,032	748	2,041	1,724
Professional school Degree:	132	217	529	618
Doctorate Degree:	30	43	271	359
Per capita income in 1989	\$ 16,421	\$ 16,060	\$ 15,263	\$ 14,267
Median family income in 1989	\$ 43,984	\$ 39,094	\$ 46,211	\$ 39,730
Total Children 5-17 for poverty measurements	5454	3432	6183	4282
Total Children 5-17 living below poverty level	230	208	326	412
Percentage of children 5-17 living below poverty level	4.2%	6.1%	5.3%	9.6%
Universe: Housing units	13,088	12,174	15,996	12,946
Occupied	12,847	11,871	15,346	12,491
Vacant	241	303	650	455
Percentage Occupied	98.2%	97.5%	95.9%	96.5%
Percentage Vacant	1.8%	2.5%	4.1%	3.5%
Total Occupied Housing Units	12,847	11,871	15,346	12,491
Owner occupied	10,713	9,082	9,692	7,168
Renter occupied	2,134	2,789	5,654	5,323
Percentage Owner Occupied	83.4%	76.5%	63.2%	57.4%
Percentage Renter Occupied	16.6%	23.5%	36.8%	42.6%

Appendix E School District Demographic Data 1990

Page 3 of 3

	Gates Chili	East Irondequoit	Rush Henrietta	Sweet Home
Speak only English	28132	22725	37834	28551
Speak Spanish:	408	483	654	428
Speak English "very well"	239	324	498	256
Speak English "well"	107	97	90	88
Speak English "not well" or "not at all"	62	62	66	84
Speak Asian or Pacific Island language:	353	67	1123	936
Speak English "very well"	210	18	581	501
Speak English "well"	119	30	360	336
Speak English "not well" or "not at all"	24	19	182	99
Speak other language:	3448	3303	2056	2051
Speak English "very well"	2210	1984	1526	1545
Speak English "well"	826	853	324	381
Speak English "not well" or "not at all"	412	466	206	125

Source: U.S. Census

Appendix F School District Demographic Data 2000

Page 1 of 4

	Gates Chili	East Irondequoit	Rush Henrietta	Sweet Home
Population	34,735	28,415	47,655	35,105
Households	13,535	12,310	16,340	13,340
Aged 19 or Younger	8,760	6,205	12,990	9,300
Percent 19 or younger	25.2%	21.8%	27.3%	26.5%
Aged 65 or Older	5,910	7,005	4,500	5,345
Percent 65 or Older	17.0%	24.7%	9.4%	15.2%
Under 5 years	2,070	1,480	2,385	1,510
5 years	380	340	505	355
6 to 11 years	2,650	2,070	3,220	2,130
12 to 17 years	2,940	1,885	3,470	2,245
18 to 24 years	2,290	1,605	10,650	7,290
25 to 34 years	4,220	3,455	6,700	4,850
35 to 44 years	5,615	4,360	6,915	4,490
45 to 54 years	4,965	3,875	5,560	4,095
55 to 59 years	2,110	1,215	2,190	1,475
60 to 64 years	1,585	1,115	1,540	1,295
65 to 74 years	3,015	2,695	2,705	2,855
75 years and over	2,895	4,310	1,795	2,490
Race Total:	34,735	28,415	47,655	35,105
White alone	30,995	25,910	39,290	30,450
Black or African American alone	2,085	1,365	3,470	1,720
American Indian and Alaska Native alone	180	65	85	50
Asian alone	795	245	3,195	2,335
Native Hawaiian and Other Pacific Islander alone	0	0	0	0
Some other race alone	225	350	445	150
Two or more races	450	480	1,170	395

Appendix F School District Demographic Data 2000

Page 2 of 4

	Gates Chili	East Irondequoit	Rush Henrietta	Sweet Home
Percentage White alone	89.2%	91.2%	82.4%	86.7%
Percentage Black or African American alone	6.0%	4.8%	7.3%	4.9%
Percentage American Indian and Alaska Native alone	0.5%	0.2%	0.2%	0.1%
Percentage Asian alone	2.3%	0.9%	6.7%	6.7%
Percentage Native Hawaiian and Other Pacific Islander alone	0.0%	0.0%	0.0%	0.0%
Percentage Some other race alone	0.6%	1.2%	0.9%	0.4%
Percentage Two or more races	1.3%	1.7%	2.5%	1.1%
Total Population:	34,735	28,415	47,655	35,105
Not Hispanic or Latino:	33,940	27,330	46,360	34,340
Hispanic or Latino:	795	1,085	1,295	765
Percentage Not Hispanic or Latino:	97.7%	96.2%	97.3%	97.8%
Percentage Hispanic or Latino:	2.3%	3.8%	2.7%	2.2%
Universe: Population 25 years and over				
Total:	24,400	21,025	27,415	21,555
No schooling completed	180	180	160	34
Nursery to 4th grade	130	95	30	70
5th and 6th grade	425	315	90	130
7th and 8th grade	635	725	335	345
9th grade	315	405	335	220
10th grade	935	865	660	440
11th grade	700	670	685	240
12th grade, no diploma	950	780	670	755
High school graduate (includes equivalency)	7,825	6,695	6,505	5,165
Some college, less than 1 year	1,700	1,370	2,015	1,345
Some college, 1 or more years, no degree	2,960	2,550	3,245	2,990
Associate degree	2,660	1,960	3,395	1,930
Bachelor's degree	3,325	2,925	5,625	4,490
Master's degree	1,375	1,105	2,875	2,385
Professional school degree	210	295	485	630
Doctorate degree	65	95	310	370

Appendix F School District Demographic Data 2000

Page 3 of 4

	Gates Chili	East Irondequoit	Rush Henrietta	Sweet Home
Median household income in 1999	\$ 49,625	\$ 40,869	\$ 50,017	\$ 41,474
Per capita income in 1999	\$ 22,479	\$ 21,442	\$ 20,419	\$ 19,574
Total Children Aged 5 to 17 Years	5,970	4,295	7,195	4,730
Total Children Aged 5 to 17 Years Living in Poverty	385	420	465	520
Percentage Children Aged 5 to 17 Living in poverty	6.4%	9.8%	6.5%	11.0%
Total Housing units	13,850	12,795	17,000	13,860
Occupied	13,535	12,310	16,340	13,340
Vacant	315	485	660	520
Percentage Occupied Housing Units	97.7%	96.2%	96.1%	96.2%
Percentage Vacant Housing Units	2.3%	3.8%	3.9%	3.8%
Total Occupied Housing Units	13,535	12,310	16,340	13,340
Owner occupied	11,115	9,180	10,675	7,810
Renter occupied	2,420	3,130	5,665	5,530
Percentage Owner Occupied	82.1%	74.6%	65.3%	58.5%
Percentage Renter Occupied	17.9%	25.4%	34.7%	41.5%

Appendix F School District Demographic Data 2000

Page 4 of 4

	Gates Chili	East Irondequoit	Rush Henrietta	Sweet Home
Total:	32,660	26,935	45,265	33,585
Speak only English	28,835	23,335	39,315	29,625
Speak Spanish:	610	735	1,165	470
Speak English "very well"	400	440	830	335
Speak English "well"	135	180	210	105
Speak English "not well"	60	85	95	20
Speak English "not at all"	15	25	30	10
Speak other Indo-European languages:	2,575	2,285	2,505	1,675
Speak English "very well"	1,405	1,390	1,740	1,150
Speak English "well"	710	515	600	420
Speak English "not well"	420	370	125	105
Speak English "not at all"	40	8	35	0
Speak Asian and Pacific Island languages:	580	540	2,020	1,485
Speak English "very well"	225	234	1,005	875
Speak English "well"	165	210	720	415
Speak English "not well"	154	64	285	195
Speak English "not at all"	29	20	4	0
Speak other languages:	60	44	264	330
Speak English "very well"	24	35	204	220
Speak English "well"	8	0	50	75
Speak English "not well"	8	8	10	35
Speak English "not at all"	8	0	0	0

Source: U.S. Census

Appendix G School District Demographic Data 2010

Page 1 of 3

	Gates-Chili	East Irondequoit	Rush-Henrietta	Sweet Home
Total population	33,006	27907	51,588	36,410
Median age (years)	43.3	44.3	30.7	29
Under 5 years	1,610	1499	2,440	1,353
5 to 9 years	1,777	1285	2,310	1,419
10 to 14 years	1,906	1395	2,348	1,530
15 to 19 years	2,172	1536	6,473	4,554
20 to 24 years	1,766	1451	8,124	6,918
25 to 29 years	2,065	1813	3,657	2,956
30 to 34 years	1,866	1835	2,939	2,011
35 to 39 years	1,867	1593	2,729	1,595
40 to 44 years	2,255	1823	2,777	1,657
45 to 49 years	2,590	2049	3,265	1,799
50 to 54 years	2,668	2163	3,242	2,001
55 to 59 years	2,375	2092	2,859	1,961
60 to 64 years	2,129	1748	2,443	1,606
65 to 69 years	1,721	1208	1,790	1,277
70 to 74 years	1,267	967	1,406	1,027
75 to 79 years	1,178	957	1,246	1,084
80 to 84 years	917	1027	826	912
85 years and over	877	1466	714	750
RACE				
Total population	33,006	27,907	51,588	36,410
One Race	32,363	27,253	50,300	35,671
White	27,738	23,224	40,322	28,585
Black or African American	3,248	2,931	4,352	2,776
American Indian and Alaska Native	104	65	126	82
Asian	879	351	4,905	3,927
Native Hawaiian and Other Pacific Islander	9	4	7	6
Some Other Race	385	678	588	295
Two or More Races	643	654	1,288	739

Appendix G School District Demographic Data 2010

Page 2 of 3

	Gates-Chili	East Irondequoit	Rush-Henrietta	Sweet Home
Percentage White	84.0%	83.2%	78.2%	78.5%
Percentage Black or African American	9.8%	10.5%	8.4%	7.6%
Percentage American Indian and Alaska Native	0.3%	0.2%	0.2%	0.2%
Percentage Asian	2.7%	1.3%	9.5%	10.8%
Percentage Native Hawaiian and Other Pacific Islander	0.0%	0.0%	0.0%	0.0%
Percentage Some Other Race	1.2%	2.4%	1.1%	0.8%
Percentage Two or More Races	1.9%	2.3%	2.5%	2.0%
Total population	33,006	27,907	51,588	36,410
Hispanic or Latino	1,474	2,121	2,135	1,073
Not Hispanic or Latino	31,532	25,786	49,453	35,337
Percentage Hispanic or Latino	4.5%	7.6%	4.1%	2.9%
Population 25 years and over	23,798	19,997	28,420	20,280
Less than 9th grade	1,067	906	784	519
9th to 12th grade, no diploma	2,094	2,103	1,638	938
High school graduate (includes equivalency)	7,854	6,301	6,951	5,323
Some college, no degree	4,070	3,464	5,017	3,477
Associate's degree	2,610	2,394	3,400	1,936
Bachelor's degree	4,249	2,742	6,480	4,545
Graduate or professional degree	1,854	2,087	4,150	3,542
MEDIAN HOUSEHOLD INCOME IN 2009	\$ 53,787	\$ 45,362	\$ 56,938	\$ 43,916
Population of Children Aged 5 to 17 years old	5,048	3,633	6,394	4,022
Estimated number of Children 5 to 17 years old living in poverty	556	646	705	583
Percentage of Children Aged 5 to 17 years old living in poverty	11.01%	17.78%	11.03%	14.50%
Total housing units	14,219	13,205	19,925	14,459
Occupied housing units	13,693	12,603	18,895	13,770
Vacant housing units	526	602	1,030	689
Percentage Occupied Housing Units	96.3%	95.4%	94.8%	95.2%
Percentage Vacant Housing Units	3.7%	4.6%	5.2%	4.8%

Appendix G School District Demographic Data 2010

Page 3 of 3

	Gates-Chili	East Irondequoit	Rush-Henrietta	Sweet Home
Occupied housing units	13,693	12,603	18,895	13,770
Owner-occupied housing units	11,058	9,106	12,149	7,839
Renter-occupied housing units	2,635	3,497	6,746	5,931
Percentage Owner Occupied	80.8%	72.3%	64.3%	56.9%
Percentage Renter Occupied	19.2%	27.7%	35.7%	43.1%
All Population Aged 5 and Older	31,525	25,143	50,599	32,669
Speak only English	28,101	21,802	43,089	27,260
Speak Spanish:	621	1,177	1,347	779
Speak English "very well"	511	767	1,096	639
Speak English "well"	49	188	151	58
Speak English "not well"	29	150	78	82
Speak English "not at all"	32	72	22	0
Speak other Indo-European languages:	1,749	1,614	2,643	2,265
Speak English "very well"	986	858	1,852	1,578
Speak English "well"	511	471	544	376
Speak English "not well"	199	203	201	311
Speak English "not at all"	53	82	46	0
Speak Asian and Pacific Island languages:	617	439	3,007	1,825
Speak English "very well"	151	229	1,506	1,154
Speak English "well"	214	80	701	532
Speak English "not well"	242	88	477	94
Speak English "not at all"	10	42	323	45
Speak other languages:	437	111	513	540
Speak English "very well"	273	111	364	390
Speak English "well"	96	0	111	118
Speak English "not well"	68	0	38	17
Speak English "not at all"	0	0	0	15
Source: U.S. Census				

Appendix H Gates Chili Elementary School District Data 1990

	Armstrong	Brasser	Disney	Paul Road
Percentage of Overall District Population	20.0%	19.5%	39.7%	20.8%
Percentage Population Under 18 Years Old	21.4%	23.9%	24.2%	21.9%
Percentage Population 65 Years Old and Older	12.9%	11.2%	9.6%	12.5%
Percentage White	93.9%	90.9%	90.5%	92.0%
Percentage Black	3.3%	6.4%	6.0%	5.7%
Percentage American Indian, Eskimo, or Aleut	0.1%	0.1%	0.1%	0.2%
Percentage Asian or Pacific Islander	1.8%	1.9%	2.3%	1.8%
Percentage Hispanic	1.4%	2.5%	2.6%	2.3%
Percentage Occupied Housing Units	98.9%	98.4%	97.6%	97.0%
Percentage Vacant Housing Units	1.1%	1.6%	2.4%	3.0%

Source: U.S. Census/Genesee Finger Lakes Regional Planning Council

As a result of some block level data falling into multiple sub-districts raw numbers are skewed and are therefore not shown

Appendix I Gates Chili Elementary School District Data 2000

	Armstrong	Brasser	Disney	Paul Road
Percentage of Overall District Population	25.7%	16.2%	30.4%	27.6%
Percentage Under age of 18	22.4%	23.7%	21.5%	25.1%
Percentage 65 years and over	18.5%	14.5%	17.4%	15.5%
Percentage White alone	88.7%	93.0%	88.7%	88.0%
Percentage Black or African American alone	5.9%	4.4%	6.6%	8.7%
Percentage American Indian and Alaska Native alone	0.2%	0.3%	0.1%	0.2%
Percentage Asian alone	2.3%	0.8%	1.8%	1.3%
Percentage Hispanic or Latino	3.3%	1.7%	3.0%	2.0%
Percentage Occupied Housing Units	97.4%	97.1%	97.3%	97.9%
Percentage Vacant Housing Units	2.6%	2.9%	2.7%	2.1%

Source: U.S. Census/Genesee Finger Lakes Regional Planning Council

As a result of some block level data falling into multiple sub-districts raw numbers are skewed and are therefore not shown

Appendix J Gates Chili Elementary School District Data 2010

	Armstrong	Brasser	Disney	Paul Road
Percentage of Overall District Population	26.7%	16.0%	28.0%	29.3%
Percentage Under age of 18	19.5%	19.8%	18.6%	22.4%
Percentage Aged 65 and over	19.8%	16.9%	20.5%	14.4%
Percentage White alone	83.7%	90.9%	87.0%	83.5%
Percentage Black or African American alone	10.6%	6.0%	9.3%	12.8%
Percentage American Indian and Alaska Native alone	0.3%	0.5%	0.3%	0.2%
Percentage Asian alone	3.6%	2.3%	2.3%	2.5%
Percentage Hispanic or Latino	6.6%	2.4%	4.1%	3.5%
Percentage Occupied Housing Units	95.8%	95.4%	95.8%	97.0%
Percentage Vacant Housing Units	4.2%	4.6%	4.2%	3.0%

Source: U.S. Census/Genesee Finger Lakes Regional Planning Council

As a result of some block level data falling into multiple sub-districts raw numbers are skewed and are therefore not shown