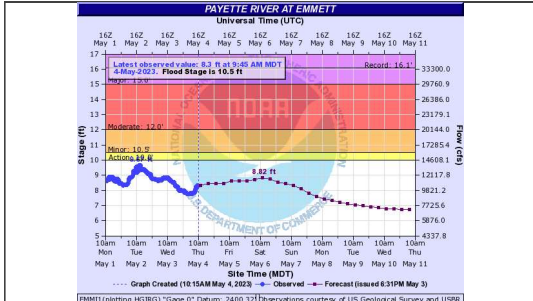
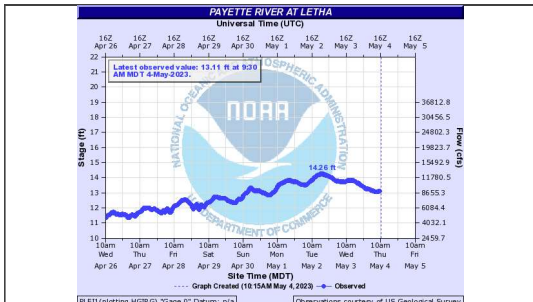


Gauge [Graph](#)



Gauge [Graph](#)



Gauge [Graph](#)

[Warnings](#)
[Weather](#)
[Forecast](#)
[Radar](#)

[AHPS Documentation](#)
[User Guide](#)
[User Brochure](#)

[What is AHPS?](#)
[Facts](#)
[Our Partners](#)

[Feedback/Questions](#)
[Provide Feedback](#)
[Ask Questions](#)



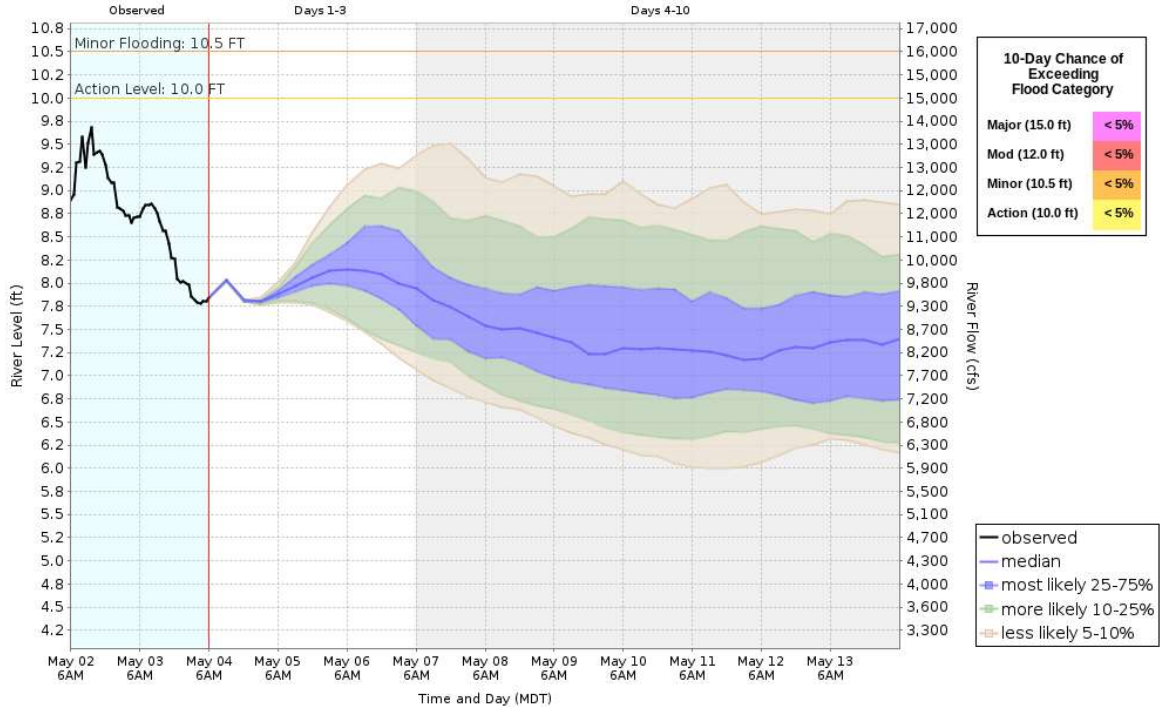
HEFS - 10 Day River Level Probabilities

Based on Hydrologic Ensemble Forecast Service Model Simulations
Used to Estimate the Range of Possible River Levels

NWS Advanced Hydrologic Prediction Service



May 04 - May 14, 2023
EMMI1 - Payette R nr Emmett



[About this graph](#)

Forecasts for the Payette River at Emmett are issued routinely year-round.

Stage - Short-term Probabilistic Guidance (Experimental)

[Stream Gauges Map](#)

[Squaw Butte](#)

[BOR Reservoirs](#)

[NWS Prediction Service](#)

Model runtime: 10:23 AM MDT May 04 2023
 Northwest River Forecast Center

[Return to Area Map](#)