

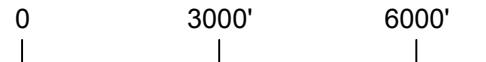
# GEM COUNTY, ID

## VALLEY FLOOR ZONING MAP

AMENDED 7/9/18

### LEGEND:

- CITY OF EMMETT
- A1 PRIME AGRICULTURE
- A2 RURAL TRANSITIONAL AGRICULTURE
- A3 RURAL AGRICULTURE
- R2 RESIDENTIAL TRANSITIONAL
- R3 RURAL RESIDENTIAL
- MR MULTI FAMILY RESIDENTIAL
- C1 COMMERCIAL
- C2 COMMERCIAL
- M-1 LIGHT INDUSTRIAL
- M-2 HEAVY INDUSTRIAL
- P PUBLIC
- MX MIXED USE
- SHADOW BUTTE INDUSTRIAL PARK
- PC PLANNED COMMUNITY



AREA OF CITY IMPACT

### SUBDIVISION INDEX

- |                             |                            |
|-----------------------------|----------------------------|
| (A1) APPLE VALLEY           | (O1) ORCHARD VIEW          |
| (A2) ARNOLD                 | (P1) PANORAMA RANCHES      |
| (A3) ATKINSON ACRES         | (P2) PICKET CORRAL         |
| (B2) BASQUE                 | (P3) PLEASANT VALLEY ACRES |
| (B3) BONNIE LAURA           | (P4) PLEASANT VIEW ESTATES |
| (C1) COMMERCIAL             | (R2) RIVER RIDGE           |
| (C2) COUNTRY LIVING ESTATES | (R3) RIVERVIEW MANOR       |
| (D1) DANIELSON              | (R4) RUSSELL SAGE ACRES    |
| (D2) DIAMOND VIEW RANCH     | (R5) RUSSELL               |
| (E1) EDMONTON               | (S1) SAND HOLLOW           |
| (G1) GATES                  | (S3) SHELLEY ACRES         |
| (H2) HAW CREEK              | (S4) STEWARD               |
| (H3) HEMBREE                | (S5) STONE CREEK ESTATES   |
| (H5) HIGH VISTA ESTATES     | (S6) SUNSET & SUNSET WEST  |
| (L1) LAST CHANCE RANCH      | (S7) SUNSET HEIGHTS        |
| (L2) LAUREL PARK            | (T1) TANGLEWOOD            |
| (L3) LYNDA VISTA            | (V1) VALLEY VIEW           |
| (M1) MILL ROAD              | (W1) WATER WHEEL ESTATES   |
| (M2) MONTOUR HEIGHTS        | (W2) WEAVER ESTATES        |
| (M3) MOUNTAIN VIEW          | (W3) WINDFALL              |
| (N1) NORTH BENCH            |                            |

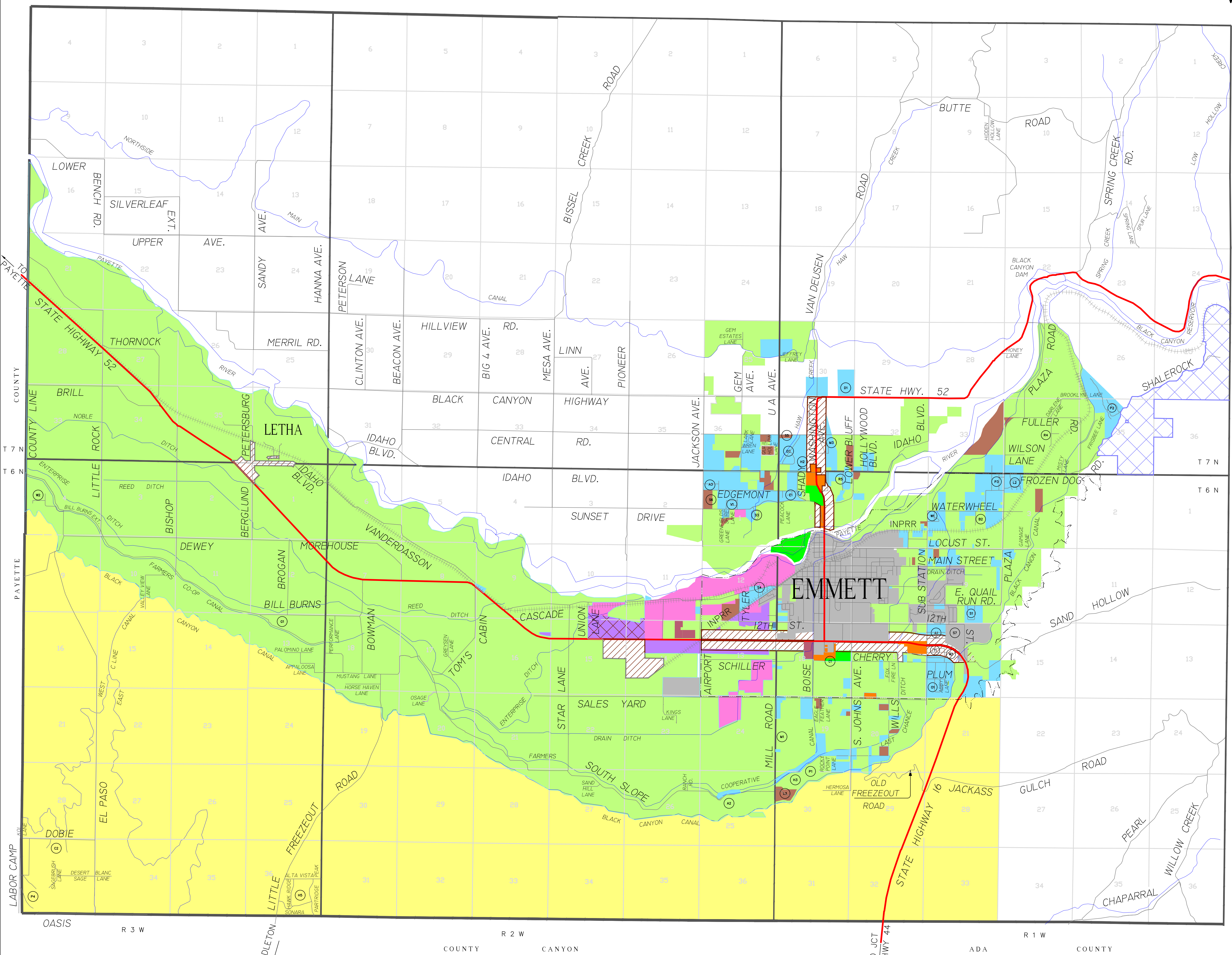
\*THIS SUBDIVISION INDEX DOES NOT INCLUDE ANY MINOR SUBDIVISIONS AS OF JUNE 26, 2006.



**GEM COUNTY, IDAHO**

THIS DRAWING IS TO BE USED FOR REFERENCE PURPOSES ONLY AND THE COUNTY IS NOT RESPONSIBLE FOR ANY INACCURACIES HEREIN CONTAINED.

H:\JRH PLATS\ZONING\2012 VALLEY FLOOR ZONING.DWG



02/25/2016 REVISED  
02/22/2012

THIS MAP REPRESENTS A COMPILATION OF PUBLIC INFORMATION FROM DIVERSE RECORDS GATHERED BY GEM COUNTY. THE PURPOSE FOR WHICH THIS MAP IS PREPARED IS AN OVERALL GENERAL REPRESENTATION OF POSITIONAL RELATIONSHIPS, AND NOT A DEFINITIVE DESCRIPTION OF LOCATION OF ANY CLASS OF OBJECTS OR CONDITIONS. HENCE, NO RESPONSIBILITY FOR ERRORS CAN BE OR IS ASSUMED. GEM COUNTY CANNOT AND DOES NOT GUARANTEE THE ABSENCE OF ERRORS OR THE CORRECTIONS OF ALL INFORMATION FURNISHED TO THEM FOR THE PREPARATION OF THIS MAP.