

Gem County Resource Manual

A working, fluid document. Last updated: November 4, 2021

Written by Katelyn Hall, MSW BSU Student

Housed and Continuous Editor: Amy Burr, Emmett School District

Draft Edited by Malerie Bettfreund, BSW BSU Student



Emergency: Call 911

Emmett City Fire Department: (208) 398-8042

Emmett Non-Emergency, 24 Hour Dispatch: (208) 365-3521

Emmett Police Department: (208) 365-6055

Health and Welfare (Apply for food stamps or Medicaid): 208-334-6700

Valor Health: (208) 365-3561

Table of Contents

Blessing Boxes	<u>Page 3</u>
Book Boxes	<u>Page 8</u>
Clothing Resources	<u>Page 10</u>
Counseling and Family Services	<u>Page 12</u>
Food Resources	<u>Page 18</u>
Healthcare Resources	<u>Page 22</u>
Housing Resources	<u>Page 25</u>
More of the Community	<u>Page 30</u>
Overarching Resources	<u>Page 38</u>
Spiritual Resources	<u>Page 43</u>
Transportation Resources	<u>Page 45</u>
Youth Resources	<u>Page 46</u>

Blessing Box 1: 12th Street



Across from Hoppell Field and RV Park
Approximately: 400 E. 12th Street
Emmett, Idaho 83617

Blessing Box 2: Abilities LLC



Abilities LLC
1638 N. Washington Ave
Emmett, ID 83617

Blessing Box 3: Live, Laugh, Love Daycare



At Live, Laugh, Love Daycare
1400 N. Washington Avenue
Emmett, Idaho 83617

Blessing Box 4: WICAP



WICAP Gem County
213 East Main Street
Emmett, Idaho 83617

Blessing Box 5: Letha



Next to the old Letha School
Approximately: 8408 W. Idaho Blvd.
Emmett, Idaho 83617

Book Box 1:

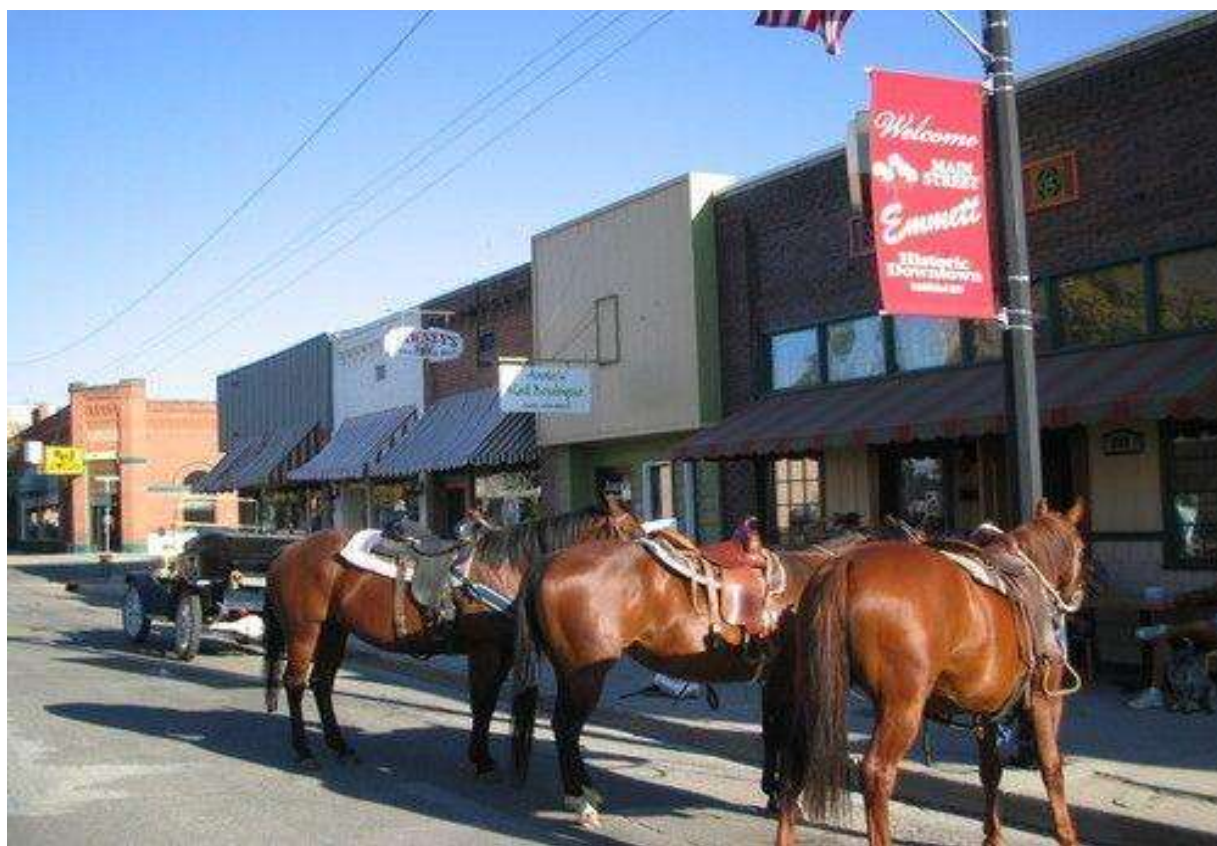


Emmett City Park, by Playground
East Main St.
Emmett, Idaho 83617

Book Box 2:



Bowman Park (Formally Huskie Park)
Corner of Washington and Main, Across from Wells Fargo
Emmett, Idaho 8617



Clothing Resources

- The Guest House
- New Leaf Thrift (See [Page 41](#))
- The Sweet Closet (See [Page 21](#))
- WICAP (See [Page 42](#))

The Guest House

1122 North Washington Ave.

Emmett, ID 83617

(208) 365-2215

Thursdays: 9:00 a.m.- 1:00 p.m.

First Saturday of Month: 9:00 a.m.-1:00 p.m.



Free clothing distribution center for Gem County and can provide clothing to men, women, children, and infants. During open hours, each family member can pick six clothing items per person and one accessory such as shoes, purses, hats, ties, socks, scarves. Individuals can come once a month to get needed clothing. Call ahead to see if they are open, COVID has fluctuated their hours.



Counseling and Family Services

- Community Partnerships Adult
- Community Partnerships Youth
- Counseling Services
- Emmett Family Services Treatment, LLC
- Rose Advocates (Domestic Violence)
- Gem County Recovery Center

Community Partnerships of Idaho Adult Services

608 S. Washington
Emmett, Idaho 8617
(208) 365-5781

Gwen (Wendy) Earls
Program Director



Services Offered:

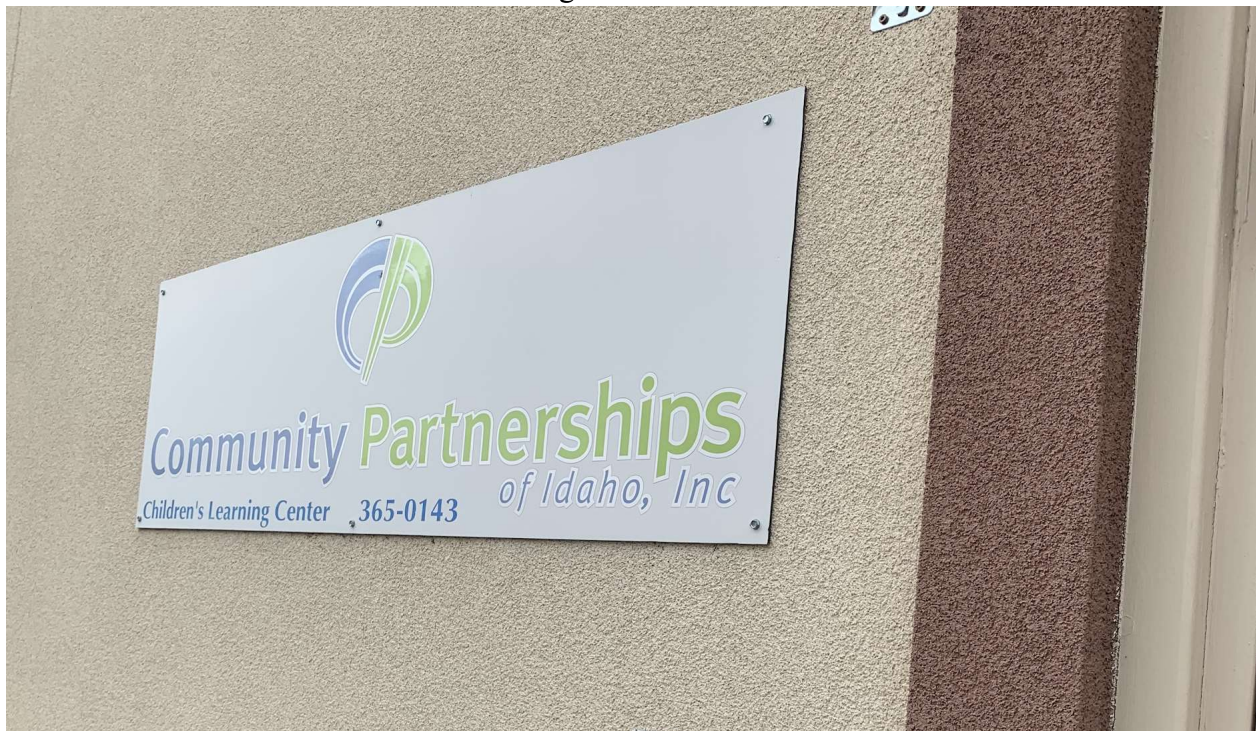
- Adult Day Services
- Developmental Therapy
- Self Direction
- Supported Living
- Employer Partnerships
- Career Services

Adult day health for those that qualify. Community Partnerships help with the goals of participants to help them succeed. Some goals can be as simple as creating a shopping list or basic living skills. For those who qualify, the program is funded through medicaid.

Community Partnerships of Idaho Children's Center

315 S. Johns Ave
Emmett, Idaho 8617
(208) 365-0143

Gwen (Wendy) Earls
Program Director



Services Include:

- Bright Beginnings an ABA Intervention Service
- Habilitative Intervention Services
- ABA Services
- Support Services for Children
- School Contracts
- Counseling

The Community Partnerships of Idaho Children's Center is a professional service that runs goals and programs with youth to improve maladaptive behavior. The focus is on community based support from ages 3-21 where the transition to the adult program happens during the 18-21. They work heavily with Work Incentives Planning and Assistance Program or (WIPA) which is a social security funded program that benefits counseling to Social Security Disabilities.

Counseling Services

Emmett Counseling & Psychiatric Services LLC

2007 East Quail Run Rd. Suite 1
Emmett, ID 83617
(208) 365-5445

Clarity Counseling Connections

1016 East Locust St.
Emmett, ID 83617
(208) 918-0054

Ryan Hale Counseling

1312 S Washington Ave. Ste B
Emmett, ID 83617
(208) 481-4461

Crossroads Counseling Center

829B S. Washington Avenue
Emmett, ID 83617
(208) 365-3141

Emmett Family Services Treatment

2031 East Quail Run Rd.
Emmett, ID 83617
(208) 365-2525

Randi Korell

113 North Commercial Ave.
Emmett, ID 83617
(208) 398-8473

Emmett Family Services Treatment, LLC

2031 East Quail Run Rd.
Emmett, Idaho 8617
(208) 365-2525

Hours: Monday-Thursday: 9:00 a.m-7:00 p.m.
Friday-Sunday: Closed



Services Offered

- Assessments (GAIN)
- DUI Evaluation
- Mental Health Assessments
- Case Management
- Individual Counseling
- Gender Specific Groups
- Domestic Violence Offender Program

Substance-Use Specific Groups

- Cognitive-Behavioral Interventions for Substance Abuse
- Family Counseling
- Anger Group
- MRT
- Co-Occurring
- Relapse Prevention
- Thinking for Good
- Early Relapse Skills
- Gender Specific Groups
- Trauma Group
- Ability to link to MAT Services

Rose Advocates

126 North Washington
Emmett, ID 83617
(208) 365-1615

Hours:

9:00 a.m. to 3:30 p.m. Monday through Thursday

9:00 a.m. to 3:00 p.m. Friday



Rose Advocates is a rural outreach crisis center for victims of domestic violence. Rose Advocates services are free to any victim of domestic violence, sexual assault, child abuse, elder abuse, bullying, stalking or harassment. Rose Advocates offers Emotional support, Personal Advocacy, Information & Referrals, one on one support services and Counseling. A Safety Plan class, Journey Beyond Abuse class and Parenting classes are also provided by highly knowledgeable advocates as part of the victims services. The advocate will explain to the client the process of filing a Civil Protection Order and will accompany the client during the court proceedings. Rose Advocates works closely as a team with Local Law Enforcement, the Gem County Victim Witness Coordinator and the Prosecuting Attorney's Office to assure the victims' rights have not been violated. Rose Advocates has a Domestic Violence shelter in Payette (The Maple Tree House) for women and children trying to escape the effects of Domestic Abuse.



Food Resources

- 7th Day Adventist Church
 - Offers Food Boxes every 3rd Tuesday from 2:00-3:00 p.m.
- Elderly Opportunity Agency (See [Page 40](#))
 - Medicaid, Meals on Wheels
- Emmett High School (See [Page 39](#))
 - For Students
- Carberry Elementary School
 - for all of Gem County residents who qualify
- Emmett Valley Friendship Coalition
- Gem County Senior Community Center Meals (See [Page 40](#))
- Seventh-day Adventist Church
- Sweet Food Pantry

Emmett Valley Friendship Coalition

"We feed people"

719 South Johns Ave.
PO Box 546
Emmett, ID 83617
208-369-7915



With the motto “We Feed People” the Emmett Valley Friendship Coalition is a community non-profit group with a core of about 450 community volunteers. Hours of operation for the Friendship Pantry are Tuesday’s from 3:15 p.m. to 6:00 p.m. with a Friendship Dinner from 5:00 p.m.-6:30 p.m. In addition, they coordinate the annual Christmas Cheer Basket program that strives to share information to increase distribution and reduce duplication. This includes meat at Thanksgiving and food and toys at Christmas. They also issue weekend food for high schoolers, extra boxes of food to seniors and emergency boxes on request. The Emmett Valley Friendship Coalition also provides food to first responders in a community emergency.

Seventh Day Adventist Church

400 Highway 16
Emmett, ID 83617
208-365-6733



On the 3rd Tuesday of every month from 2:00 p.m. to 3:00 p.m. they have food boxes available for pickup.

Sweet Food Pantry

Motto: Reaching Out to Those in Need

7205 Sweet-Ola Highway
(208) 830-7409

Thursdays: 4:00 p.m. - 6:00 p.m.



The Sweet Food Pantry is located in Sweet and open Thursdays from 4-6 p.m. with emergency boxes available if needed. The emergency telephone number for boxes is (208) 830-7409. The Sweet Food Pantry is also the Sweet Closet and has the same hours for clothing assistance. During the holiday season, there are annual Thanksgiving boxes the Wednesday before Thanksgiving for those who sign up. They also do a Christmas room which is a toy room for parents to come 'shop' Christmas presents for their children. Toys are for children aged 0-14 and 14-16 have gift certificates. This happens the week before Christmas and Christmas food boxes are provided at that time as well. There is no income verification. They also provide snacks for the Ola school district during the school season. The Sweet Food Pantry and Closet is Christian based and will pray for people, but it is not required.



Healthcare Resources

- Assisted Living Facilities
- Home Health
- Hospice
- Hospital and Specialty Providers
- Personal Care Services
- Pharmacy
- Physical Therapy
- Primary Care Clinics

- **Assisted Living Facilities**

- Apple Valley (208) 365-1497
 - 715 North Butte Avenue, Emmett, Idaho
- The Cottages Assisted Living and Memory Care (208) 365-1497
 - 411 East 12th Street, Emmett, Idaho
- Meadow View Assisted Living and Quail Run Memory Care (208) 365-1122
 - 1013 South Johns Avenue, Emmett, Idaho

- **Home Health**

- Encompass Home Health, (208) 452-4972
 - 435 South Whitley Drive, Suite A, **Fruitland**, Idaho
- Horizon Hospice (208) 365-1693
 - 310 East Main Street, Emmett Idaho
- Idaho Home Health (208) 887-6633
 - 3356 East Goldstone Way, Suite 3360, **Meridian**, Idaho
- Terrance Home Health (208) 506-7200
 - 2029 W. Navigator Drive, Suite 120, **Meridian**, Idaho

- **Hospice Care**

- Heart 'n Home Hospice (208) 365-2099
 - 306 South Washington, Emmett, Idaho
- Horizon Hospice (208) 365-1693
 - 310 East Main Street, Emmett, Idaho

- **Hospital and Specialty Providers**

- Valor Health, (208) 365-3561
 - 1202 East Locust Street, Emmett, ID 83617
 - Emergency room, hospital services, laboratory, surgical services, specialty medicine, and orthopedic care

- **Long Term Care and Skilled Nursing,**

- Cherry Ridge of Cascadia (208) 365-3597
 - 501 West Idaho Boulevard, Emmett, Idaho
- Meadow View Assisted Living and Quail Run Memory Care (208) 365-1122
 - 1013 South Johns Avenue, Emmett, Idaho
- River's Edge Rehabilitation and Long Term Care, (208) 365-1497
 - 714 North Butte Avenue, Emmett, Idaho
- Valor Health Transitional Care Rehabilitation, (208) 365-3561

- **Personal Care Services**

- A Helping Hand (208) 908-6111
 - 8620 West Emerald Street, Ste 170 **Boise**, Idaho
- Home Helpers (208) 504-1352
 - 106 West Main Street, Ste. E, **Middleton**, Idaho
- T & J Homecare (208) 365-4141
 - 920 South Washington Avenue, Emmett, Idaho
- Terrance Home Care, (208) 506-7220
 - 2929 West Navigator Drive, Suit 120, **Meridian**, Idaho

- **Pharmacies**

- Albertsons, (208) 365-4218
- Bi Mart, (208) 272-9454
- Hollis Family RX, (208) 369-4510
- Walgreens, (208) 365-4327

- **Physical Therapy**

- Mountain Land Physical Therapy, (208) 365-4400
 - 912 South Washington Avenue, Emmett, ID, 83617
- Peak Physical Therapy, (208) 365-4400
 - 809 South Washington Avenue, Emmett, ID, 83617

- **Primary Care Clinics**

- Black Canyon Medical Group, (208) 365-2735
 - 426 Highway 16, Emmett, Idaho, 83617
- Emmett Family Medicine, (208) 365-7131
 - 2001 East Quail Run, Emmett, Idaho, 83617
- Valor Health Emmett Medical Center, (208) 365-6004
 - 1102 East Locust Street, Emmett, Idaho, 83617



Housing Resources

- [Boise Houselessness Options](#)
- [Boise Shelters](#)
- [Section 8 Form](#)
- [Section 8 Housing Options](#)

Boise Houselessness Options

To be brief, Gem county falls under region three which simply does not have the resources that region four (Ada and Boise county) have. <https://211.idaho.gov/> is always a great start. If an individual in need is able to go to Boise, there are several other options. Utilizing the transportation from the Gem County Senior Community Center can be an option to get to a shelter. Below are options in **SECTION 4** but are the only options within the Gem County area.

Jesse Tree Idaho

Office Hours: Monday - Friday, 9am-5pm

Email: office@jessetreeidaho.org

Phone: (208) 383-9486

Address: 1121 Miller Street
Boise, ID 83702

Housing Crisis Line *From their website:* jessetreeidaho.org

“If you are unable to pay your rent and are at risk of eviction and homelessness, please call or text our housing crisis line at 208-383-9486 Monday- Friday between 9 am- 5 pm. Please leave us your name, city you live in, and the reason you’re calling, as well as a good time to reach you. The Housing Crisis Line acts as the entry point to our Emergency Rental Assistance Program. Our staff and volunteers can also offer support, information about the eviction process and community resources, and referrals to our partners.”

St. Vincent de Paul

Ada County and Mountain Home: (208) 331-2208

Caldwell Area: (208) 919-2940 (English) (208) 571-2160 (Spanish)

Nampa Area: (208) 466-3400

From their website: <http://svdpid.org/>

“At St. Vincent de Paul: We help people in need by assisting with food, housing expenses, clothing, furniture, and other basic human needs through your generous donations of goods, food, volunteer time, and financial support. Together, we prevent homelessness in Southwest Idaho.”

Our Path Home

150 N. Capitol Blvd, Boise ID 83702

Seeking Services: 208-495-4240

Admin: 208-570-6845

Email: ourpathhome@cityofboise.org

From their website, ourpathhome.org

“Our Path Home, the public-private partnership working to end homelessness in Ada County, operates from the service model and philosophy that permanent housing is the solution to homelessness.”

Boise Shelters

Our Path Home Continued:

Page from: <https://www.ourpathhome.org/services/im-experiencing-homelessness/>

I'm experiencing homelessness. Where should I stay tonight?

If you are experiencing homelessness, please call **Our Path Home CONNECT: 208-495-4240**

City Light Home for Women and Children

1404 W. Jefferson St. Boise, Idaho 83702
(208) 368-9901

If you are a woman with children seeking shelter, the Boise Rescue Mission's City Light Home offers a safe haven of hope and love, and provides emergency services such as meals, shelter and clothing, as well as education, work-search assistance, mental health counseling, addiction recovery through the New Life Program, and children's programs.

City Light

Hays House

7221 Poplar St. Boise, Idaho 83704
(208) 322-2308

If you are a youth between the ages of 9-18 seeking shelter, the Idaho Youth Ranch's Hays House is the Treasure Valley's only 24-hour shelter for runaway and homeless youth. Hays House offers emergency shelter, counseling, education, parent education classes and crisis intervention.

Hays House

Interfaith Sanctuary Shelter

1620 W. River St. Boise, Idaho 83702
(208) 343-2630

If you are a single man, woman or family, Interfaith Sanctuary offers a safe place to sleep, a warm meal nightly and case management services.

Interfaith Sanctuary

River of Life Men's Shelter

575 S. 13th St. Boise, Idaho 83702
(208) 389-9840

If you are a single male, the River of Life Rescue Mission provides shelter, care and respect through education, a hot meal, or counseling and recovery.

River of Life

Women's and Children's Alliance Secure Shelter

720 W. Washington St. Boise, Idaho 83702
(208) 343-7025

If you are fleeing domestic violence or have experienced sexual assault, the WCA provides a comprehensive and secure 120-day residential shelter program and transitional housing in confidential locations with round-the-clock staff assistance, private rooms and common living facilities.

Women's and Children's Alliance

SECTION 8 HOUSING CHOICE VOUCHER PROGRAM PRE-APPLICATION

SOUTHWESTERN IDAHO COOPERATIVE HOUSING AUTHORITY
377 CORNELL STREET
MIDDLETON, ID 83644
PHONE (208) 585-9325
FAX (208) 585-9326

For Office Use Only

Date: _____
 Time: _____

1. HEAD OF HOUSEHOLD INFORMATION

Last Name _____ First Name _____ Middle Initial _____
 Social Security Number _____ Date of Birth _____
 Mailing Address _____
 E-mail Address: _____ (City) (State) (Zip Code) _____
 Telephone number _____ Alternate Telephone number _____

2. INFORMATION ABOUT SPOUSE

Last Name _____ First Name _____ Middle Initial _____
 Social Security Number _____ Date of Birth _____

3. HOW MANY PEOPLE WILL LIVE IN THE UNIT? Please include yourself.

ADULTS _____ CHILDREN _____

4. DO ANY PERSONS WHO WILL LIVE IN THE UNIT HAVE A DISABILITY? ☐ Yes ☐ No**5. FOR HUD STATISTICAL PURPOSES ONLY**

Please identify your race and ethnicity by checking one box in each of the two categories below:

Check One:

- ☐ White ☐ Asian ☐ Black/African American
☐ American Indian/Alaska Native
☐ Native Hawaiian/Other Pacific Islander

Check One:

- ☐ Hispanic or Latino
☐ Not-Hispanic or Latino

6. SOURCE(S) OF FAMILY INCOME; CHECK ALL THAT APPLY AND IDENTIFY MONTHLY AMOUNT:

- ☐ Wages _____ ☐ Social Security _____ ☐ SSI _____ ☐ TANF/Welfare _____
☐ Self-Employment _____ ☐ Retirement Payments _____ ☐ Unemployment _____
☐ Child Support/Alimony _____ ☐ Disability Benefits _____ ☐ Military Pay _____

7. I CERTIFY THAT THE ABOVE INFORMATION IS ACCURATE AND COMPLETE.

I understand that submission of false information or misrepresentation may result in loss of eligibility to participate in the housing choice voucher program.

Date _____ Signature of Head of Household _____

When this pre-application is received in our office, your name will be placed on the waiting list. Due to limited funding we are unable to tell you how long it may be until assistance can be provided. During this waiting period it is essential that you report changes of address, telephone number, family composition and income status to this office. Failure to report changes may significantly delay the issuance of your voucher. If mail addressed to you is returned by the post office as undeliverable, your name will be removed from the waiting list. Once a voucher is issued, you may lease anywhere in our jurisdiction which includes the following counties: Adams, Boise, Canyon, Elmore, Gem, Owyhee, Payette, Valley and Washington.

Section 8 Housing Options

Section 8 housing can take years to move up on the list and the application can be tricky. Below are places that accept section 8 housing. The WICAP, see [page 42](#), is an excellent resource to navigate the application process.

Chaparral Apartments

704 West 4th Street
Emmett, ID 83617
(208) 365-3802
Built in 1978

Valley Manor Apartments

555 North Butte
Emmett, ID 83617
(208) 365-5660
Built in 1973

Emmett Sunset Manor (55 Plus)

1000 Fernlee Street
Emmett, ID 83617
(208) 365-2316
Built in 1974

Meadowbrook Apartments

703 West Main Street
Emmett, ID 83617
(208) 365-4379
Built in 2000

Autumn Court Apts. (62 Plus)

501 East 12th Street
Emmett, ID 83617
Built in 2002

Ross Island

651 North Moffatt Ave.
Emmett, ID 83617
(208) 649-1470
Built in 2017



More of the Community

- American Legion
- Bingo (See [Page 40](#))
- Civic Groups
- Emmett Public Library
- Frontier Cinema
- Live Laugh Love Daycare
- Maggie's on Main
- Pet Adoption League

American Legion Post 49

120 N Hayes Ave
Emmett, ID 83617



The American Legion was chartered and incorporated by Congress in 1919 as a patriotic veterans organization devoted to mutual helpfulness. Post 49 was established on February 26, 1925 and named in honor of Lawrence Dresser who was a resident of Gem County. Post meetings are held the first Thursday of each month and their facebook page is a great way to gain contact with them.

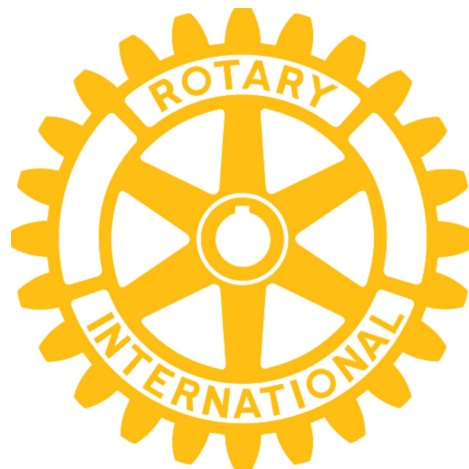
Civic Groups



“Kiwanis will be a positive influence in communities worldwide — so that one day, all children will wake up in communities that believe in them, nurture them and provide the support they need to thrive”

Email: kiwanisemmett@gmail.com

Or Call: (208) 781-2148



“We provide service to others, promote integrity, and advance world understanding, goodwill, and peace through our fellowship of business, professional, and community leaders.”



“To empower volunteers to serve their communities, meet humanitarian needs, encourage peace and promote international understanding through Lions clubs.” Emmett Lions also help with obtaining eye glasses.

Emmett Public Library

275 South Hays Ave
Emmett, ID 83617
(208) 365-6057

Monday-Friday 11 a.m. to 6 p.m.

Saturdays: 12 a.m. to 4:00 p.m.

Sunday: Closed



Educational opportunities, for adults, children, and veterans. The library can be the community hub for all various things such as librarians can proctor tests, has two children programs a week (no specific age), holds adult craft called make it and mingle once a month, and participates in the first Wednesday events. The library is FREE.

There are events like Story Time and Story Play for 6 months to 8 years Tuesdays and Thursdays from 11-11:45 a.m. Also, there is a Lego Club for anyone under the age of 18. At the library there are computers with access to the internet which can include internet gaming.

There is a website with updated information with descriptions of events or can call ahead.

Frontier Cinema

127 West Main Street
Emmett, ID 83617
(208) 365-4393

Hours may Vary, Call Ahead

Monday-Friday: 7:00 p.m.

Saturday: 4:00 p.m. and 7:00 p.m.



Frontier Cinema offers affordable movies and concessions. Special admission price on Tuesdays is \$2.50. There is popcorn and other concessions available for purchase during theater hours.

Live Laugh Love Daycare

1400 N. Washington Avenue
Emmett, Idaho 83617
(208) 860-4807



Mission Statement: Our hearts desire at Live, Love, Laugh Daycare is to provide parents the peace of mind that comes from knowing their child is in a loving, safe, caring and educational environment. They also accept ICCP, Idaho Child Care Program, which provides some assistance towards child care.

(208) 860-4807 – Brooke -Call/Text Enrollment & Billing

(208) 963-2178 – Center Line – Call/Text Checking in on your child(ren) at the facility at that time or General Information.

Email – livelovelaughdaycare@gmail.com

Maggie's on Main

110 E. Main St
Emmett, ID 83617
(208) 369-4310

Tuesday-Friday 10 a.m. to 6 p.m.

Saturdays: 10 a.m. to 4:30 p.m.

Sunday, Monday: Closed



“Looking for a place to let your creative spirit out? You've found the place!
Maggie's on Main will be catering to the artisan and crafting needs of the Treasure Valley.

Specializing in:

Cross Stitch
Crochet and Knitting
Quilting
Painting”

There are classes held, there is a schedule for both free and charged activities such as sewing, oil painting, cross stitch, some are bring your own projects. Call ahead to get the schedule or come down.

Pet Adoption League

1526 N Washington Ave
Emmett, ID 83617
(208) 365-1359



Hours:

Monday: 10:00 a.m.-2:00 p.m.
Tuesday: Closed
Wednesday: 12:00 p.m.-5:00 p.m.
Thursday: 1:00 p.m.-3:00 p.m.
Friday: 10:00 a.m.-2:00 p.m.
Saturday: 1:00 p.m.-3:00 p.m.
Sunday: Closed

“Pet Adoption League, which began as the Pound Animal League in 1988, is a non - profit organization focused on the care and welfare of all domestic dogs and cats.” There are volunteer opportunities to help at the shelter, anyone under the age 18 needs to be accompanied by an adult. Donations are welcomed.



Overarching Resources

- Emmett School District
- Gem County Community Senior Center
- New Leaf Thrift
- WICAP

Emmett School District

400 S Pine St. #1
Emmett, ID 83617
(208) 365-6301



There is a food pantry for students in the high school counseling office, and also has some dental hygiene supplies. Emmett middle school also has a food pantry & hygiene items available. Children in grades Kindergarten through 6th grade can sign up to be part of backpack club which provides them with a bag of food to take home for the weekends. Carberry Elementary school has partnered with WICAP and the USDA to become an Emergency Food Organization. Boxes of food are available for pickup every Wednesday from 2:45-4:00. There is an eligibility form that needs to be signed once per year stating your are not over the income limits for your household size. Households are allowed to pick up one box of food per month. This program is for all residents of Gem County. You do not have to have children enrolled in the school district to get a food box.

Overall, the school district cares deeply about their students and wants them to succeed inside and outside of the classroom. If a student needs resources, communicating with the school district is a great start.

District

Federal Programs: Isa DeArmas

English Learners/Migrant: Elsa Johnson

Community Coordinator and Homeless Liaison: Amy Burr

Food Services for the school district: Ty White

School Nurse: Suzi Morgan

School Counselors

High School (208-365-6323): Norma Martinez and Chris Roper

Black Canyon Junior/Senior High School (208-365-5552): Summer Ash

Middle School (208-365-2921): John Lavegrne and Laurie Kiester

Carberry (208-365-0839): Lynn Horton

Shadow Butte (208-365-0877) : Emma McComb-Kennedy

School Bus Garage (208-365-3207): Shauna Davis

Gem County Senior Community Center

719 S. Johns Avenue
Emmett, ID 83617
(208) 365-4343

Monday to Friday, 9 a.m.-3 p.m.



Provides **SEVERAL** services to the community

- **Meals:** M-F Lunch Meals \$5 and volunteers can deliver depending on need
 - Elderly Opportunity Act provides frozen meals one time a week, paid through medicaid. Call (208) 365-4461
- **Medical Equipment Supplies**
 - Through donations can lend out walkers, crutches, all sorts of chairs
- **Various Clubs**, some charge, others ask if there is space to join.
 - Domino Club, start after lunch Mondays through Fridays
 - Pinochle Club, Monday's and Thursday's 5 p.m-7 p.m.
 - Sewing Club, Wednesdays 9 a.m. to 11 a.m.
 - It is \$5 but with payment, you can attend lunch
 - Bible Studies, Wednesday night
- The dining hall, dance hall, and kitchen can be **rented** out
- **Bingo**, Wednesday and Friday night, Open doors at 5 p.m., tickets 5:30 p.m. and game starts at 6:30 p.m.
 - \$2.50 for packet of 10 games
 - \$7.50 for a strip (3 sets) of 10 games
 - \$1 Specialty Games, Butterfly and Blue Bee
- **Treasures at the Center**
 - Secondhand store, 10:30 a.m. – 3 p.m.
- **Transportation**
 - Call the center to schedule
 - Primarily for seniors and the disabled but is also a community service

New Leaf Thrift

116 E Main St
Emmett, ID 83617
(208) 369-4215

Monday-Friday 10 a.m. to 6 p.m.

Saturdays: 10 a.m. to 5 p.m.

Sunday: Closed



“New Leaf Thrift Store is under the umbrella of New Ministries, a new Christian based 501c(3) non-profit organization. New Leaf Thrift was created to minister to the needs of people within our community. When fire or domestic abuse happens families are left to figure out their next steps, and we hope to help them with basic needs of clothing, hygiene products, household necessities and maybe some fun stuff too. We hope to gain your support and trust in serving the people in our community who are in unique situations of need” (New Leaf Thrift, 2018)

WICAP Gem County Community Center

213 E Main St
Emmett, ID 83617
(208) 365-3116



The WICAP provides a wide range of services for the community and it is best to give them a call depending on the particular need. WICAP is a thrift store as well as provides food and utility assistance dependent on income. There are computers available in the facility to help with resumes and GED assistance.

WICAP is also available to help refer for housing assistance, including section 8 and subsidized housing units. They can help with community service hours and partner with Ada county with the completion of those. WICAP is also the diaper bank for the community.

Donations to the thrift store are welcome during **business hours** and people are **encouraged** to call ahead to navigate service as they provide such a wide variety.



Spiritual Resources

An evolving list of Churches in Emmett. Hours of worship may vary, call ahead or look into the location for further information.

All Within Emmett, ID 83617

Abundant Life International Fellowship	207 S. Washington Ave.	(208) 365-2823
Calvary Chapel of Emmett	498 West Idaho Blvd.	(208) 365-0991
Community Bible Church	120 East 3rd Street	(208) 365-3712
Emmett Church of the Nazarene	1144 N. Washington Ave.	(208) 365-2215
Emmett Foursquare Church	212 South Boise Avenue	(208) 365-2918
First Baptist Church	126 South Hayes Avenue	(208) 365-4457
First Presbyterian Church	212 East 3rd Street	(208) 365-2360
New Life Celebration Emmett Campus	1809 South Substation Rd.	(208) 761-9651
Our Redeemer Lutheran Church	4 South Hayes Avenue	(208) 365-5231
Riverside Church	400 Highway 16	(208) 329-5450
Sacred Heart Catholic Church	211 East 1st Street	(208) 365-4320
Seventh Day Adventist Church	400 Highway 16	
The Church of Jesus Christ of Latter-day Saints	1001 East 2nd Street	(208) 365-0686
The Orchard Christain Church	1950 East 12th Street	(208) 502-0149
The Word Church	223 East 2nd Street	(208) 546-8104
United Methodist Church	1500 East Locust Street	(208) 365-3242



Transportation Resources

- Gem County Senior Community Center (see [Page 40](#))
- Injury Care EMS
 - Ambulance Service able to transport Boise to Gem County
 - (208) 365-3846
- MTM Medical
 - Medicaid, non-emergency transportation
 - 1 (877) 503-1261
- Resilient Transportation
 - Handicapped transportation services, wheelchair and gurney transportation
 - (208) 914-3846



Youth Resources

- See Below for an Encompassing List of Youth Organizations

Youth Resources

- 4-H Extension Office
 - (208) 365-6363
 - 4-H is the world's largest youth organization that offers programs for youth ages 5-19 including shooting sports, photography, robotics, and animal sciences, everything but organized sports or music! No youth will be turned away, scholarships available. Gem/Boise County 4-H has over forty leaders and over two hundred local youth involved!
- AWANA Club
 - Call (208) 365-0991
 - Preschool-12th year, bible memory and bible lessons. Game time and various events and theme nights. Focused on memorizing scripture
- Boy Scouts
 - Connected with Cub Scouts, boy scouts is the largest youth organization and is for youth 11-17 years old.
- Cub Scouts
 - Cub Master Chad Battazor (208) 742-6378
 - Cub Scouting is for boys and girls who want to grow into their best future selves. This is a hands-on learning and achievement encouraged environment. Citizenship, character, personal fitness, and leadership are the four aims of scouting. Youth grades K-5.
- Emmett City Library see [page 37](#)
- Emmett High School
 - Call (208) 365-6323 for more information
 - Clubs/Organizations include Business Professionals of America, FFA, National Honors Society
- Emmett Middle School
 - Call (208) 365-2921
 - Clubs/Organizations include sports, band, choir, drama, student council, sources of strength, and tech club.
- Emmett Youth Football
 - Contact Tim at (208) 365-2160
 - Boys and girls, ages 7 to 12. Optimist football teaches teamwork, sportsmanship, commitment, and developing relationships. Players do not 'try out' -- all are accepted.
- Gem County Recreation District
 - (208) 365-5748
 - Offers programming for all ages which include organized sports, dance classes (Makayla's Dance Studio), cheerleading, karate, tumbling and

holiday festivities. There is also an after-school program for K through 6th graders.

- Girl Scouts
 - Girl Scouts of Silver Sage Council (208) 377-2011
 - With 1.7 million girls involved across the country, Girl Scouting encourages courage, confidence, and character.
- Lake Dance Steps Dance Studio
 - Raquel Lake, Lake Dance Steps Director: 208-371-2974
 - Website: www.lakedancesteps.com
 - Offers instruction for ages 2.5-18 years. Classes in Ballet, Jazz, Hip-Hop, and Contemporary Dance are available. The primary objective is to give students the opportunity to express themselves and grow in a positive way.
- Little League
 - Email emmettlittleleague@yahoo.com
 - Open to boys and girls who are 'League Age' which is 8-16 and attend school within gem county. The league is run by volunteers and encourages a positive and enthusiastic mindset.