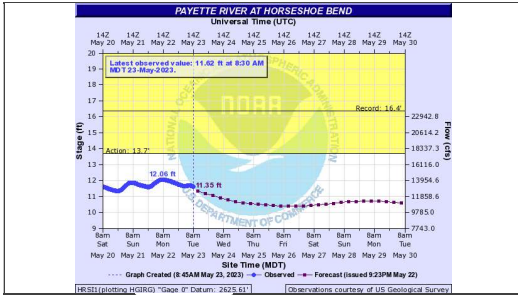
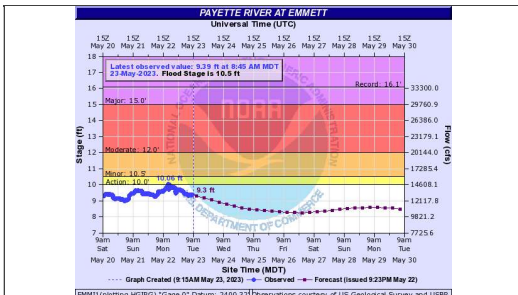




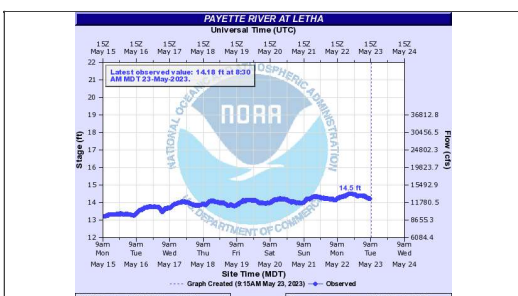
How To **Hydrology**



Gauge Graph



Gauge Graph



Gauge Graph

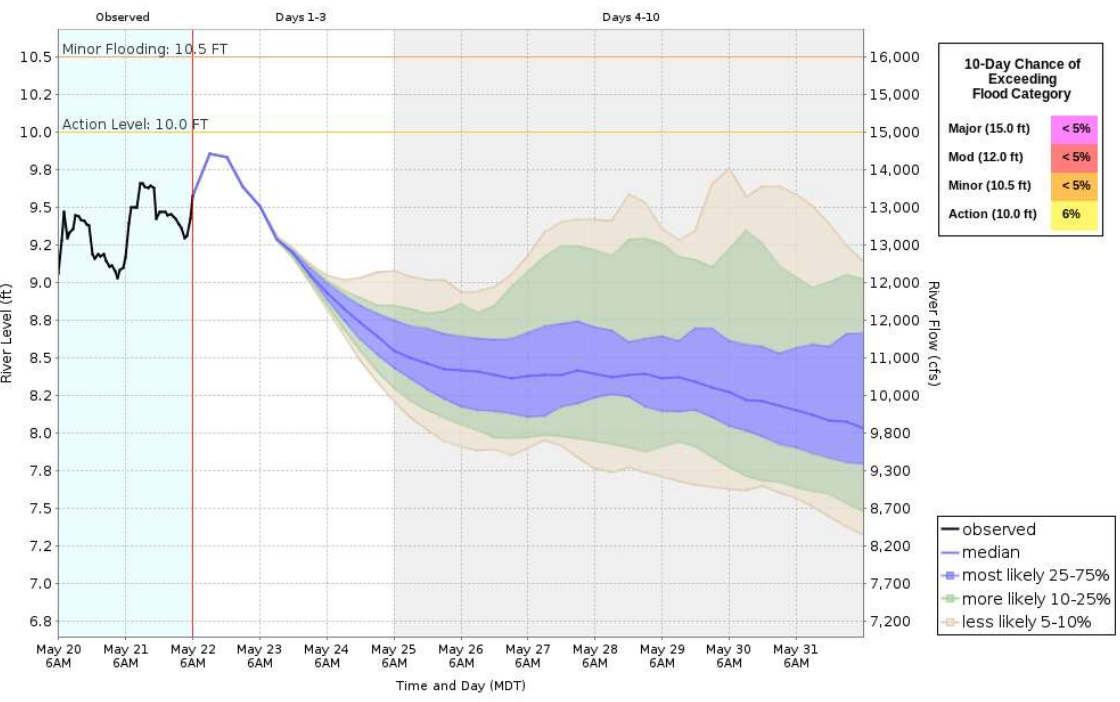
- Warnings
- Weather
- Forecast
- Radar
- AHPS Documentation
- User Guide
- User Brochure
- What is AHPS?
- Facts
- Our Partners
- Feedback/Questions
- Provide Feedback
- Ask Questions



## HEFS - 10 Day River Level Probabilities

Based on Hydrologic Ensemble Forecast Service Model Simulations  
 Used to Estimate the Range of Possible River Levels

May 22 - Jun 01, 2023  
**EMMI1 - Payette R nr Emmett**



[About this graph](#)

Forecasts for the Payette River at Emmett are issued routinely year-round.

Model runtime: 09:27 PM MDT May 22 2023  
 Northwest River Forecast Center  
 Stage - Short-term Probabilistic Guidance (Experimental)