



Unsettled West; Severe Storms in the Central US

Severe storms with damaging winds and large hail can be expected ahead of and along a cold front moving through the Mid Mississippi and Ohio Valleys, and central Texas. Unsettled conditions in the West continue with locally heavy rain and wet snow in the higher elevations. Dry, gusty winds will produce critical fire weather threats in parts of southern Colorado and northern New Mexico. [Read More >](#)

[En Español](#) | [Share](#) |

Current conditions at Nampa Municipal Airport (KMAN)

Lat: 43.5813°N Lon: 116.5231°W Elev: 2536ft.



Partly Cloudy
52°F
11°C

Humidity 66%
Wind Speed SE 5 MPH
Barometer 30.0 in (1015.92 mb)
Dewpoint 41°F (5°C)
Visibility 10.00 mi
Last update 08 May 09:35 AM MDT

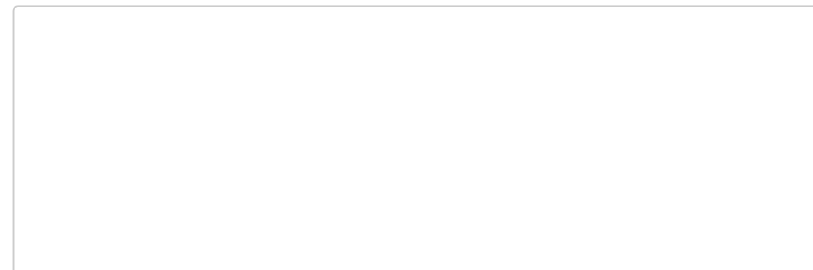
Extended Forecast for Emmett ID

Today	Tonight	Tuesday	Tuesday Night	Wednesday	Wednesday Night	Thursday	Thursday Night	Friday
Mostly Sunny then Showers Likely	Showers then Showers Likely	Slight Chance Showers	Partly Cloudy	Partly Sunny	Mostly Clear	Sunny	Mostly Clear	Sunny
High: 66 °F	Low: 44 °F	High: 64 °F	Low: 42 °F	High: 71 °F	Low: 46 °F	High: 75 °F	Low: 48 °F	High: 80 °F

Detailed Forecast

Today
Showers likely and possibly a thunderstorm after noon. Some of the storms could produce small hail and gusty winds. Partly sunny, with a high near 66. Light south southeast wind increasing to 5 to 10 mph in the afternoon. Winds could gust as high as 20 mph. Chance of precipitation is 70%.

Tonight



Showers and possibly a thunderstorm before midnight, then showers likely. Some of the storms could produce small hail and gusty winds. Low around 44. East wind 5 to 7 mph becoming calm. Chance of precipitation is 100%. New precipitation amounts between a tenth and quarter of an inch, except higher amounts possible in thunderstorms.

Tuesday

A 20 percent chance of showers. Partly sunny, with a high near 64. South southeast wind 5 to 8 mph.

Tuesday Night

Partly cloudy, with a low around 42. Northeast wind around 5 mph.

Wednesday

Partly sunny, with a high near 71. Light and variable wind becoming northwest 6 to 11 mph in the morning.

Wednesday Night

Mostly clear, with a low around 46.

Thursday

Sunny, with a high near 75.

Thursday Night

Mostly clear, with a low around 48.

Friday

Sunny, with a high near 80.

Friday Night

Mostly clear, with a low around 53.

Saturday

Sunny, with a high near 83.

Saturday Night

Mostly clear, with a low around 57.

Sunday

Sunny, with a high near 87.



Forecast Area

Point Forecast:

Emmett ID

43.87°N 116.48°W (Elev. 2415 ft)

Last Update:

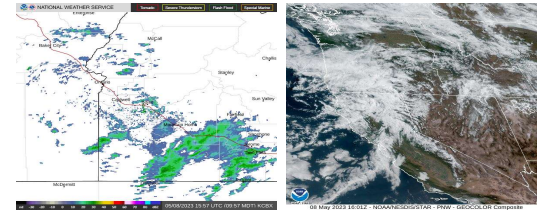
3:47 am MDT May 8, 2023

Forecast Valid:

10am MDT May 8, 2023-6pm MDT May 14, 2023

Additional Resources

Radar & Satellite Image



Hourly Weather Forecast

