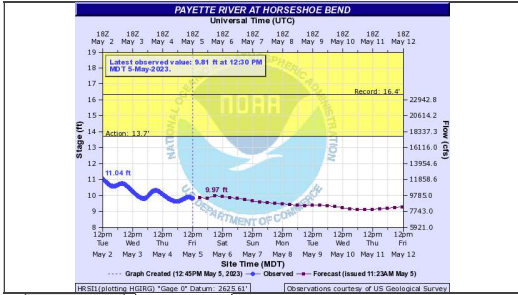
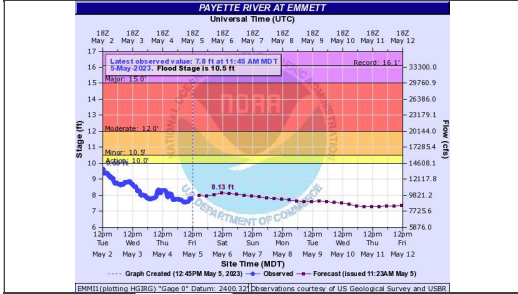




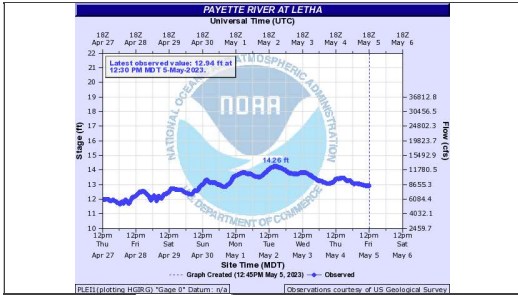
How To **Hydrology**



Gauge Graph



Gauge Graph



Gauge Graph

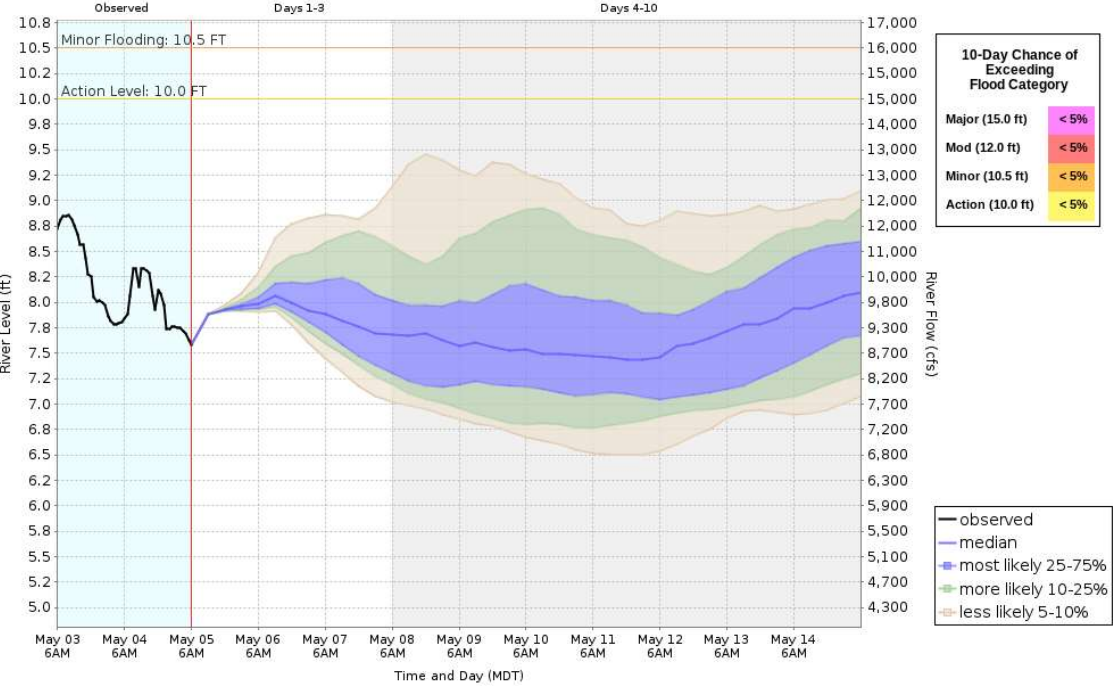
- Warnings
- Weather
- Forecast
- Radar
- AHPS Documentation
- User Guide
- User Brochure
- What is AHPS?
- Facts
- Our Partners
- Feedback/Questions
- Provide Feedback
- Ask Questions



## HEFS - 10 Day River Level Probabilities

Based on Hydrologic Ensemble Forecast Service Model Simulations Used to Estimate the Range of Possible River Levels

May 05 - May 15, 2023  
EMM11 - Payette R nr Emmett



[About this graph](#)

Forecasts for the Payette River at Emmett are issued routinely year-round.

Stage - Short-term Probabilistic Guidance (Experimental)

Model runtime: 11:32 AM MDT May 05 2023  
Northwest River Forecast Center