

# DESIGN PROPOSALS FOR CONNEAUT, OH

JUNE 2016







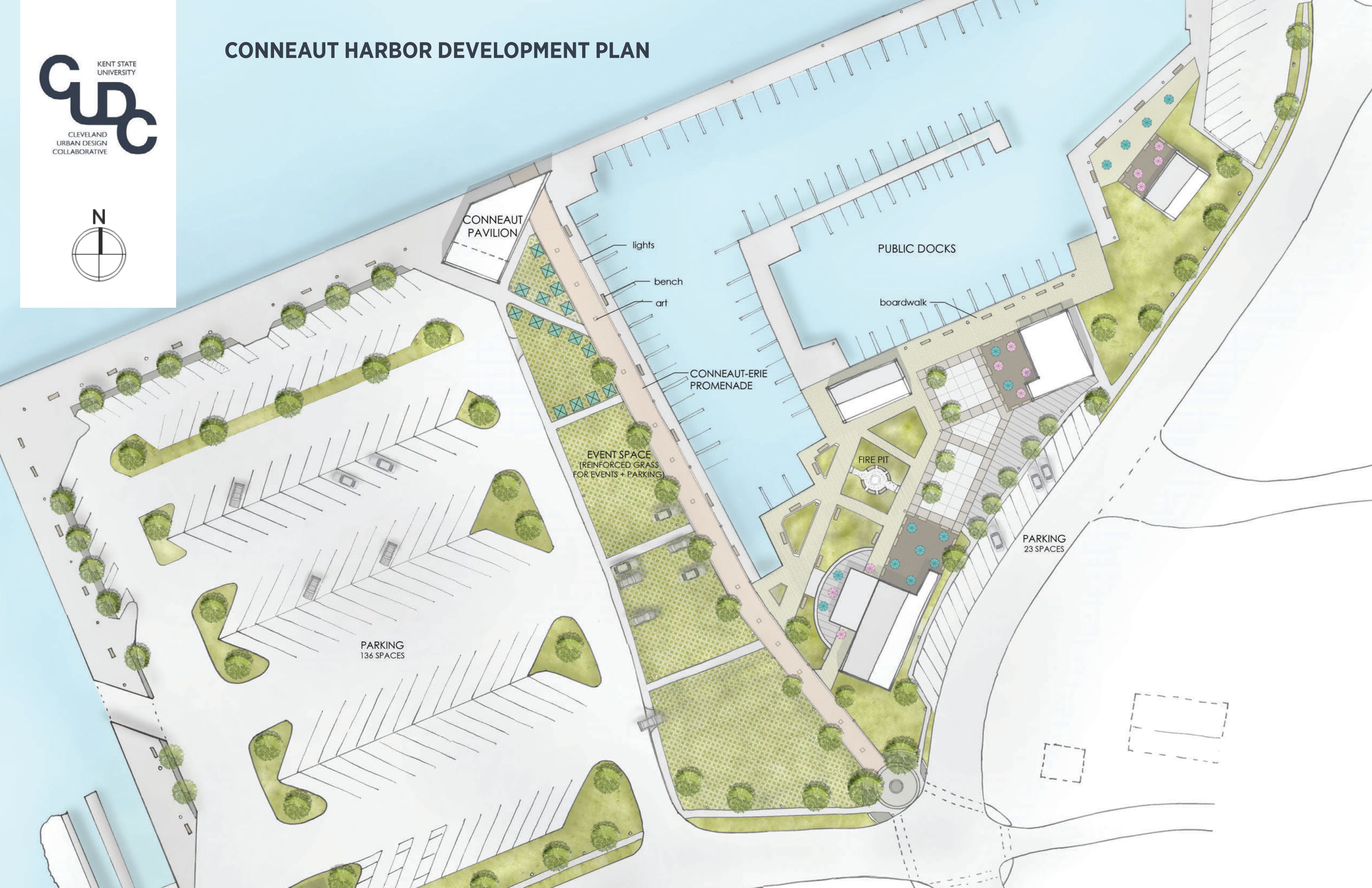
# CONNEAUT HARBOR DEVELOPMENT PLAN







# CONNEAUT HARBOR DEVELOPMENT PLAN









# CONNEAUT HARBOR DEVELOPMENT





## CONNEAUT HARBOR DEVELOPMENT

- 1 Enhanced crosswalks
- 2 New angled parking
- 3 Public outdoor deck
- 4 Renovated Fisheries building
- 5 Parking and event space
- 6 Waterfront pavilion
- 7 Multi-use retail storefronts
- 8 New housing development
- 9 Outdoor amphitheater
- 10 Public ADA accessible ramps





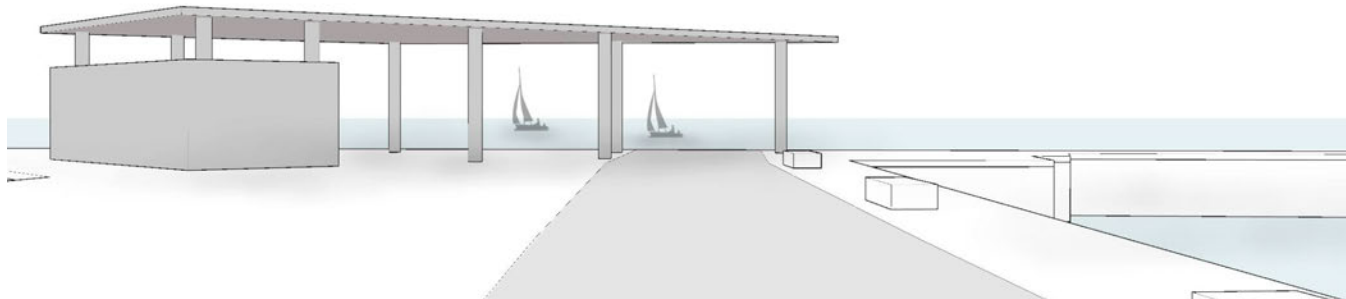
# CONNEAUT HARBOR

Inspirational Images and Products



# PAVILION

Framing views

















# VIEWPOINT/ART













# BENCHES





Maitland Wood Picnic Bench  
[By Wildon Home]



<https://www.allmodern.com/Maitland-Wood-Picnic-Bench-UT4300.html>



Wood Slats Backless Park bench  
Regency Style  
[By Belson Outdoors]



<http://www.belson.com/Regency-Style-Wood-Flat-Benches-with-Steel-Frame>



6' Backless Concrete Bench  
[By Belson Outdoors]

<http://www.belson.com/Concrete-Bench-No-Back>





Bold and Strong Backless Bench  
[By Belson Outdoors]

<http://www.belson.com/Trailside-Recycled-Plastic-Backless-Benches>





Decora Style bench  
[By Belson Outdoors]

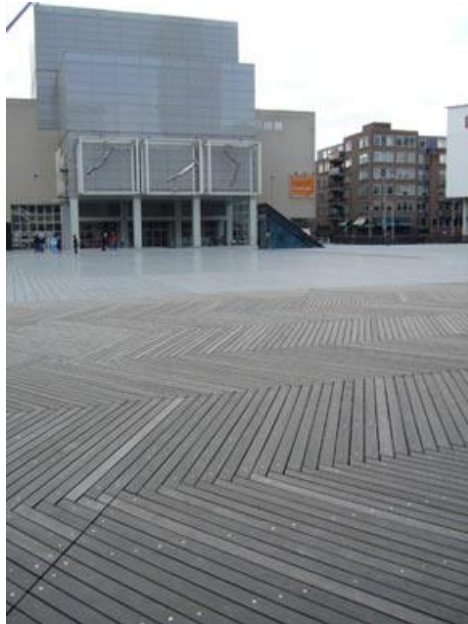
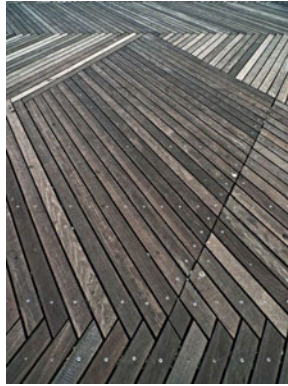


<http://www.belson.com/Decora-Style-Park-Benches-with-Recycled-Plastic-and-Steel-Frame>



# GROUND MATERIALS

Wood + Metal  
Decking





Wood or composite  
boardwalk/deck



<http://www.mataverdedecking.com/ipe-decking>



Wood or composite  
boardwalk/deck



<http://timbertech.com/products/docksider>



Patterned + colored  
Concrete pavers

<http://www.hanoverpavers.com/>

<http://www.coldspringusa.com/>





# Grasscrete

Option 1: pavers with grass





# Grasscrete

Option 2: reinforced grass



Technical Bulletin, Heritage Bomanite:  
<http://www.heritagebomanite.com/files/SPS%20Molded%20Pulp%20Former%20Technical%20Bulletin.pdf>



# LIGHTING

Pilecap lights  
(By Gulf Coast Lighting)

<http://www.gulfcoastlighting.com/waterfront/>





Sea Gull Light  
(By Destination Lighting)

<http://www.destinationlighting.com/item/sea-gull-lighting-sebring-black-led-post-light/P1429497>





Modern Post Light  
(By Destination Lighting)



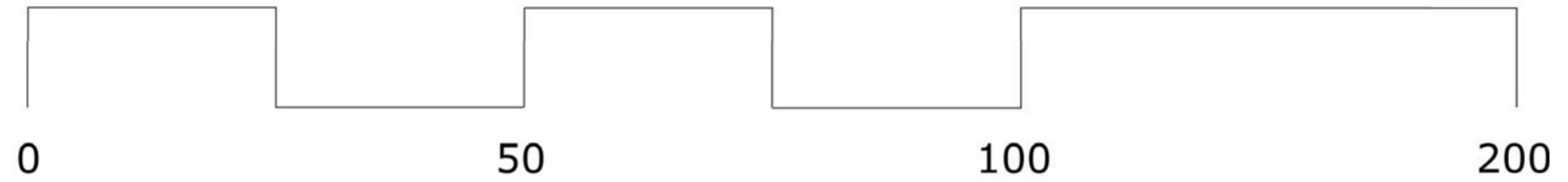
<http://www.destinationlighting.com/item/modern-post-light-white-glass-silver-finish/P963726>



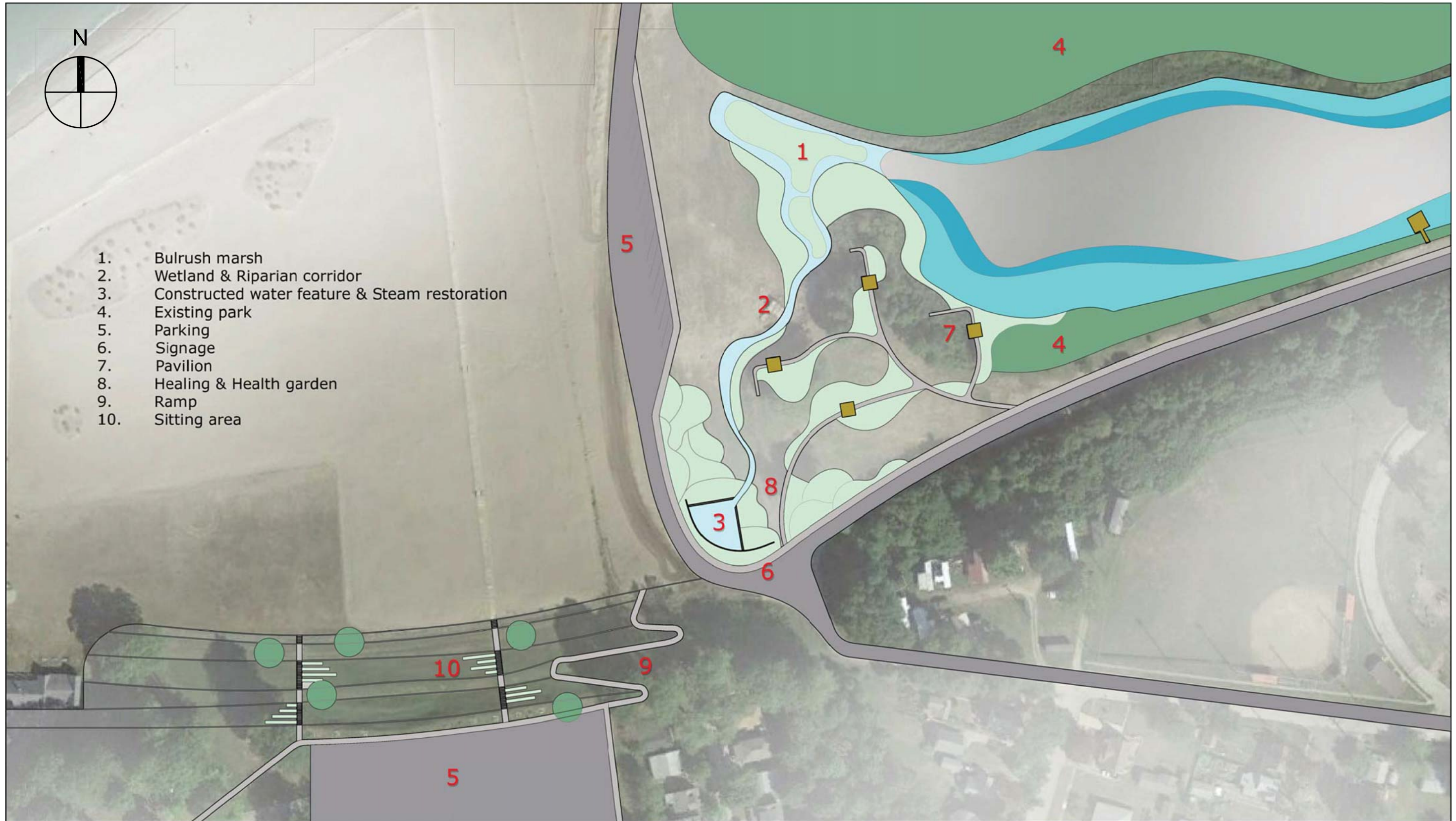




# Point Pleasant Option #1

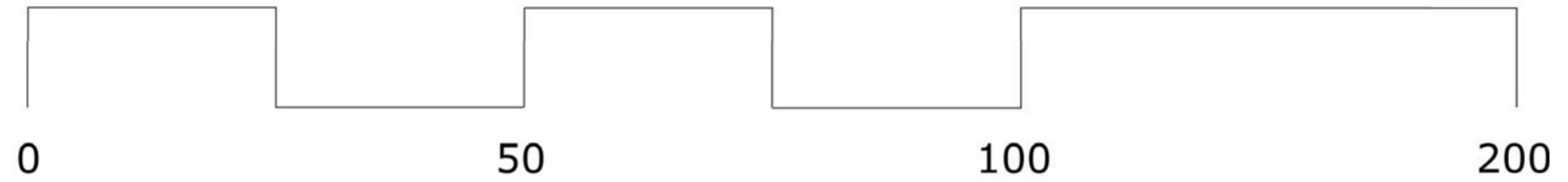


01

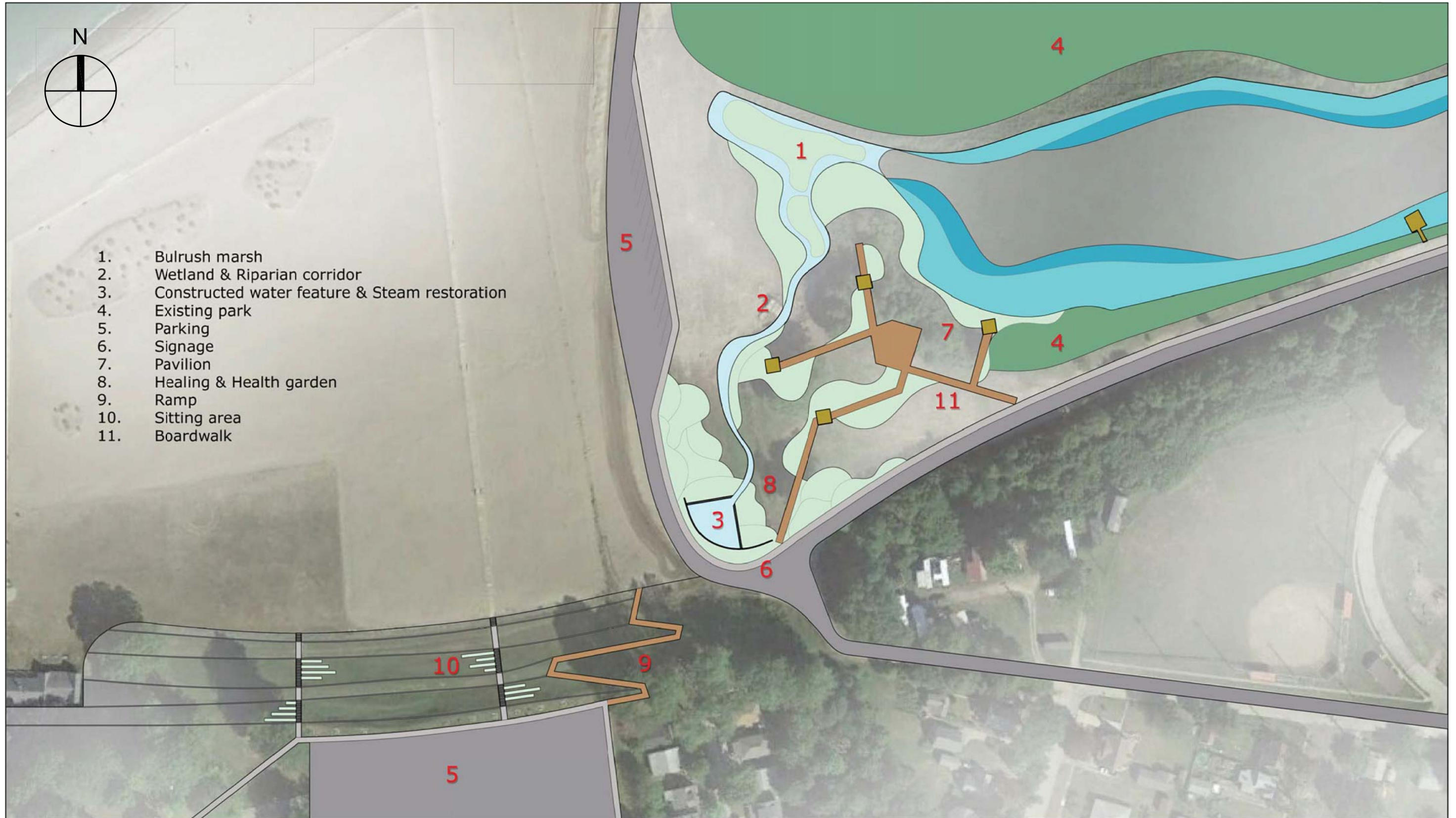




# Point Pleasant Option #2



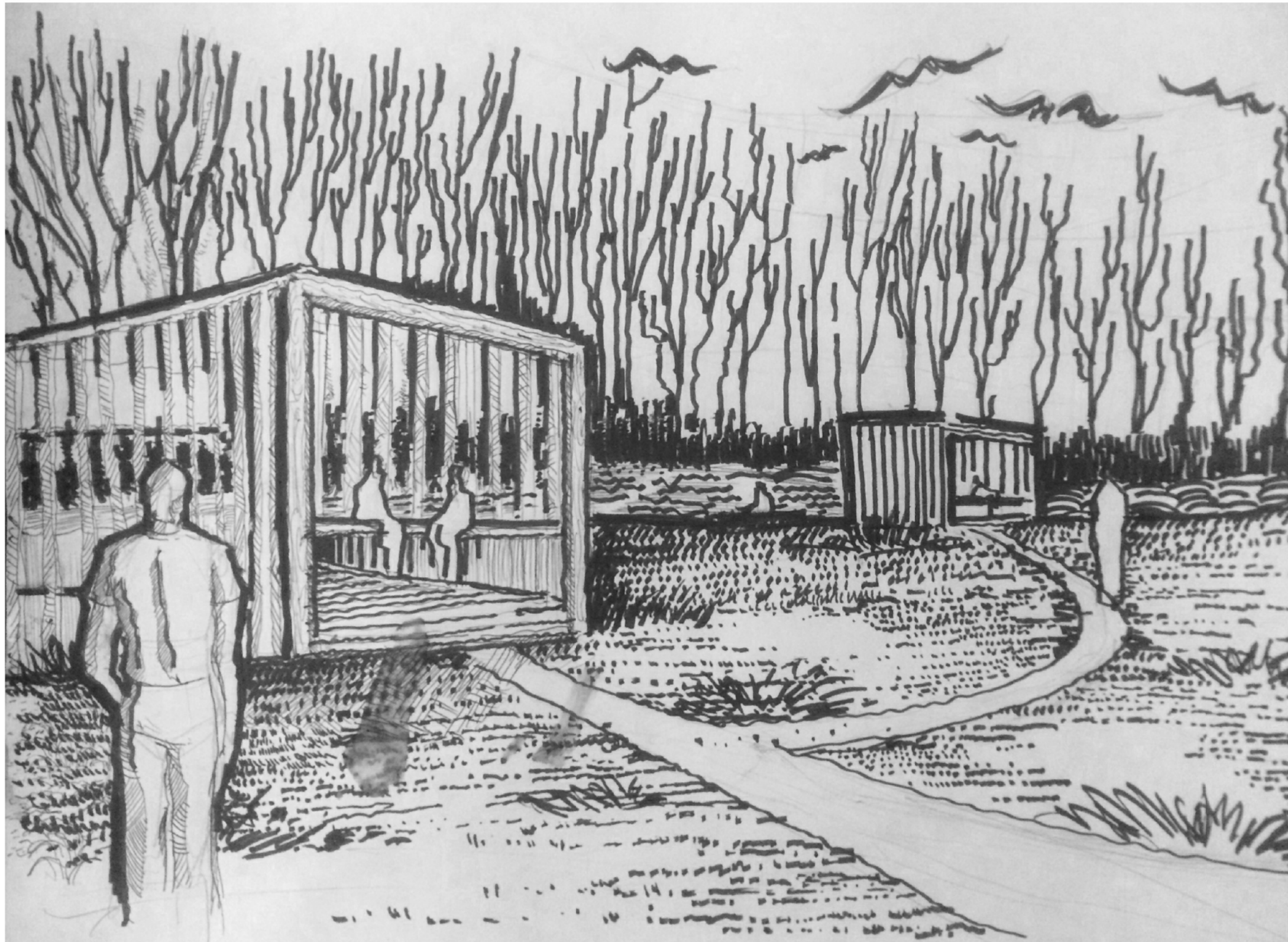
02





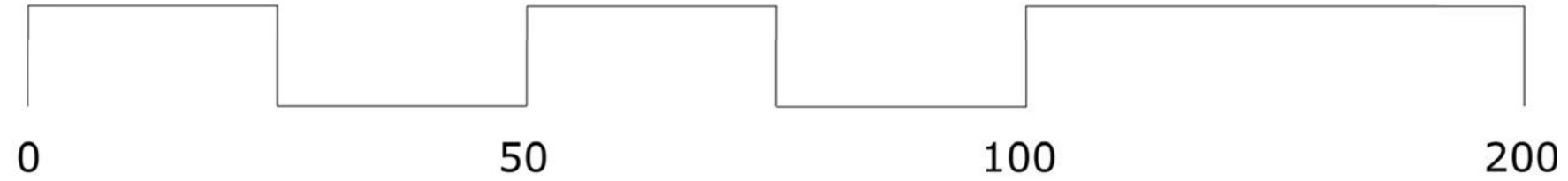
# Point Pleasant

## Rendering of proposed pavilions (As shown on Options 1 & 2)

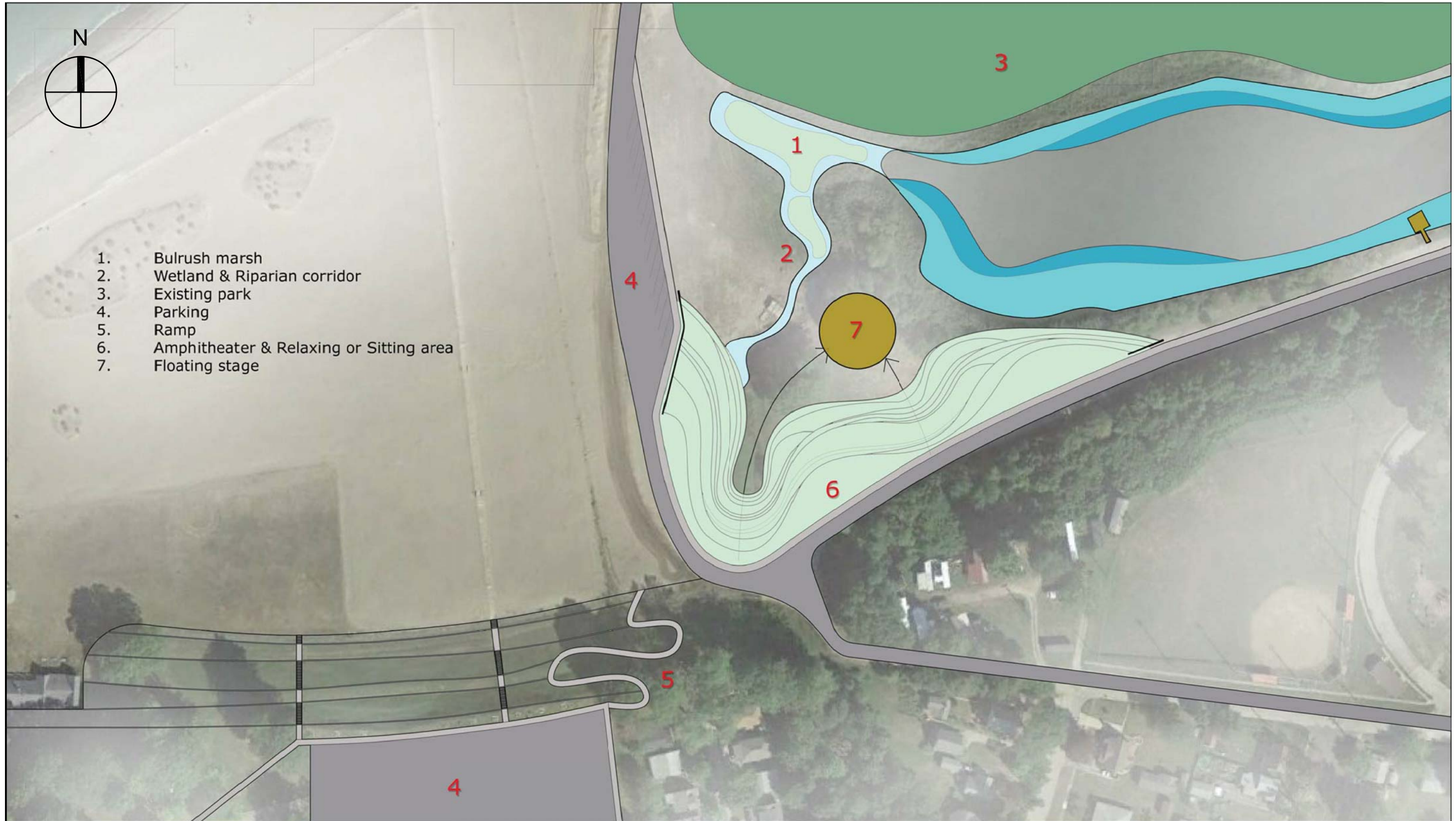




# Point Pleasant Option #3

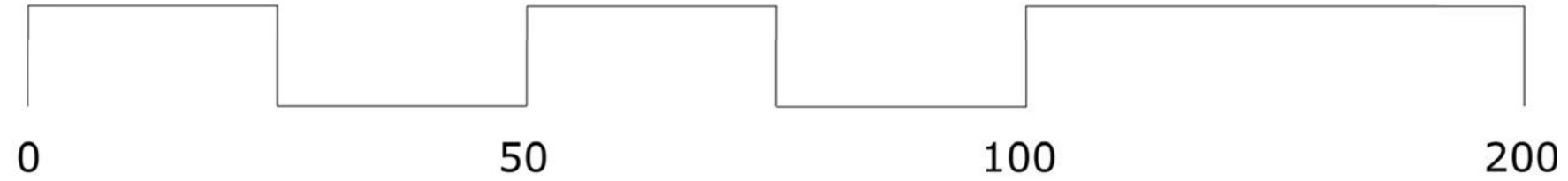


03

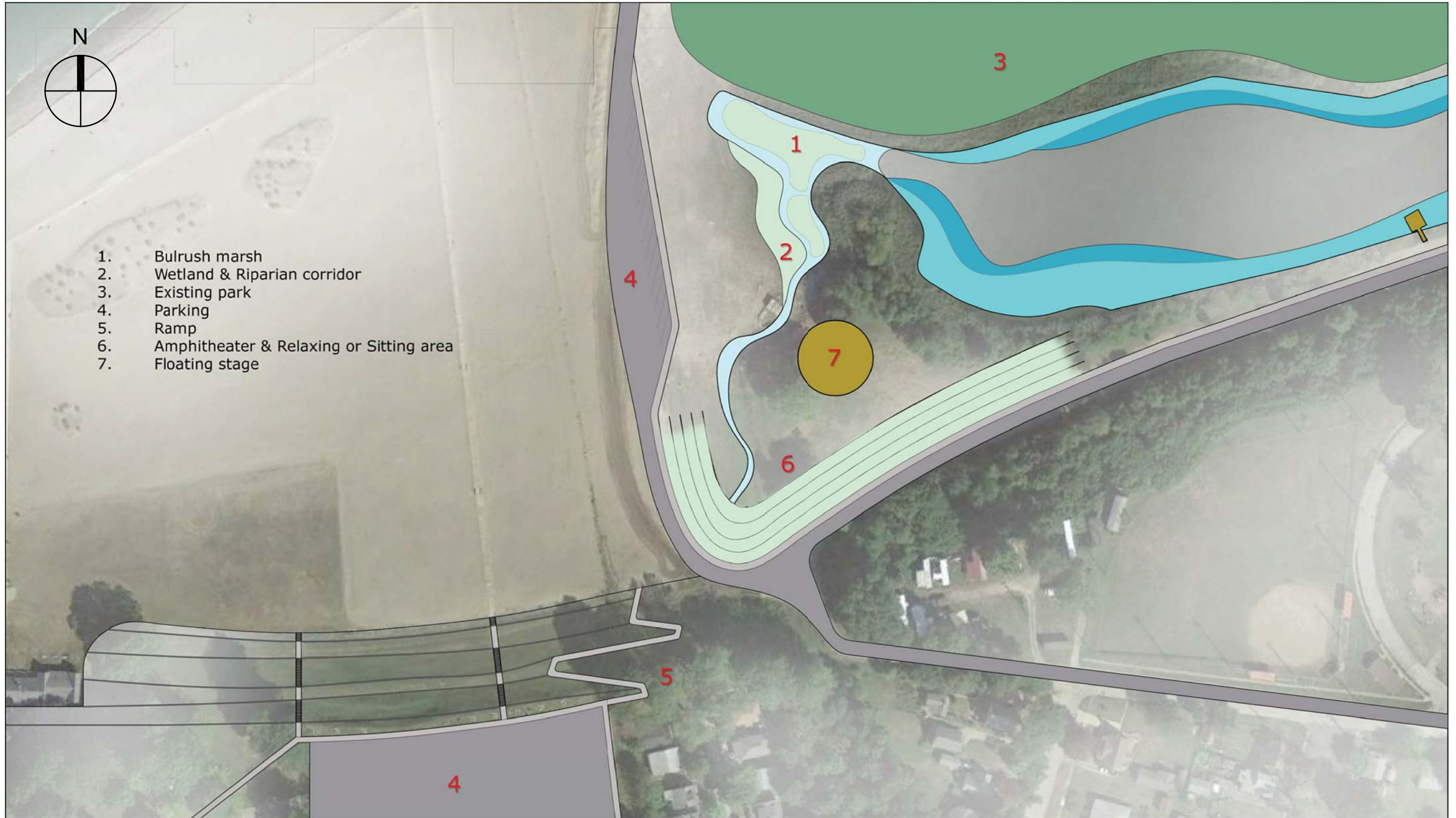




# Point Pleasant Option #4



04



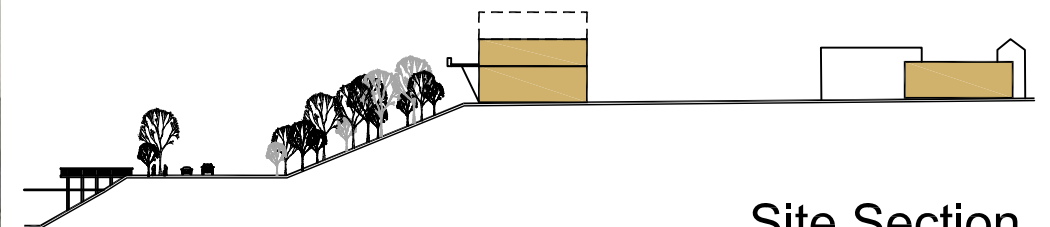
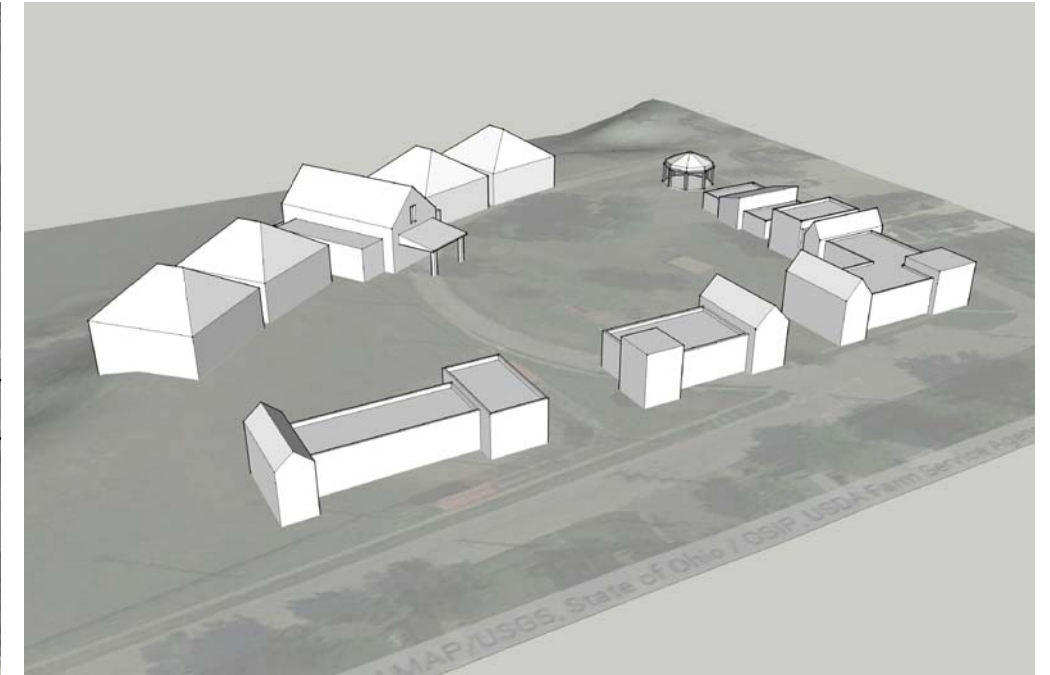


# Hilltop Development - Option #1

LINER RETAIL BUILDINGS  
& LOOKOUT HOTEL

Areas:  
Retail - 25,800 SF  
Hotel\* - 64,000 SF (32K/floor)  
\*Includes event space  
Parking Spaces: 216

01



Site Section



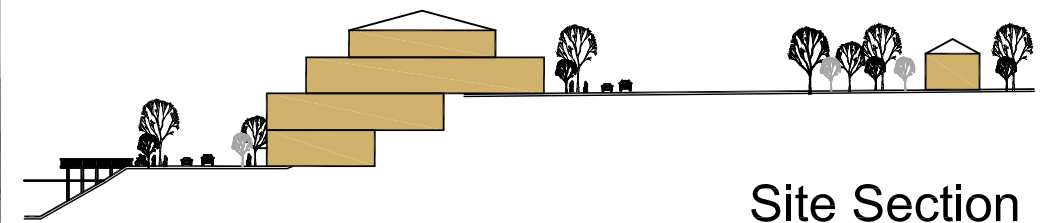
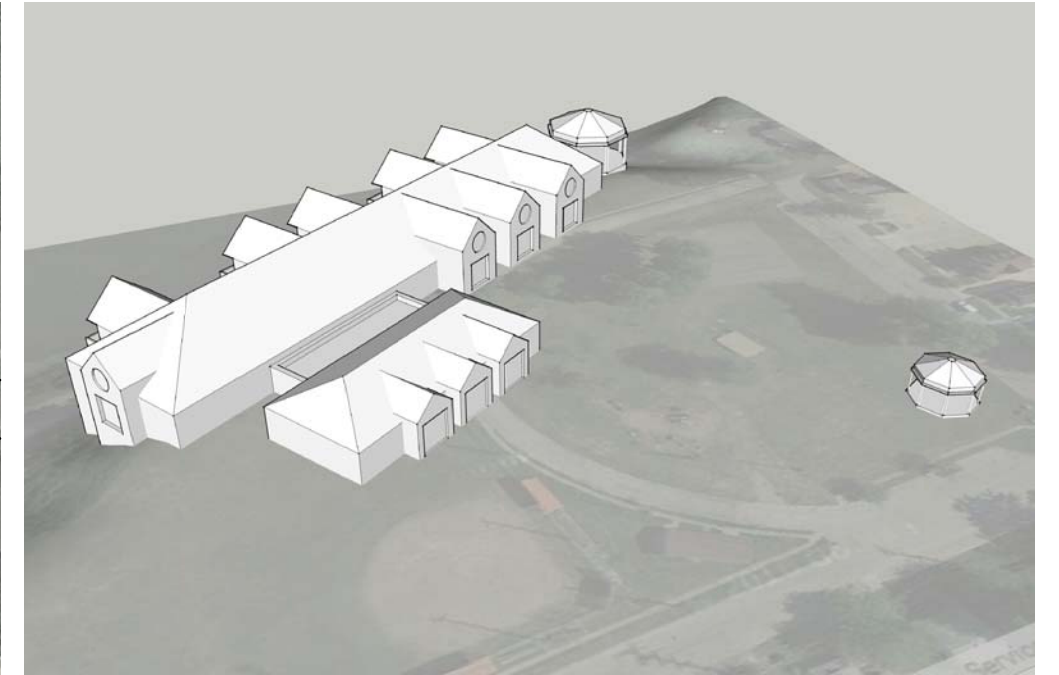


# Hilltop Development - Option #2

LOOKOUT HOTEL / EVENTS CENTER  
& NAYLOR RETAIL

Areas:  
Retail - 32,500 SF  
Residential Condo - 43,500 SF  
Hotel - 75,000 SF  
Parking Spaces: 266

02



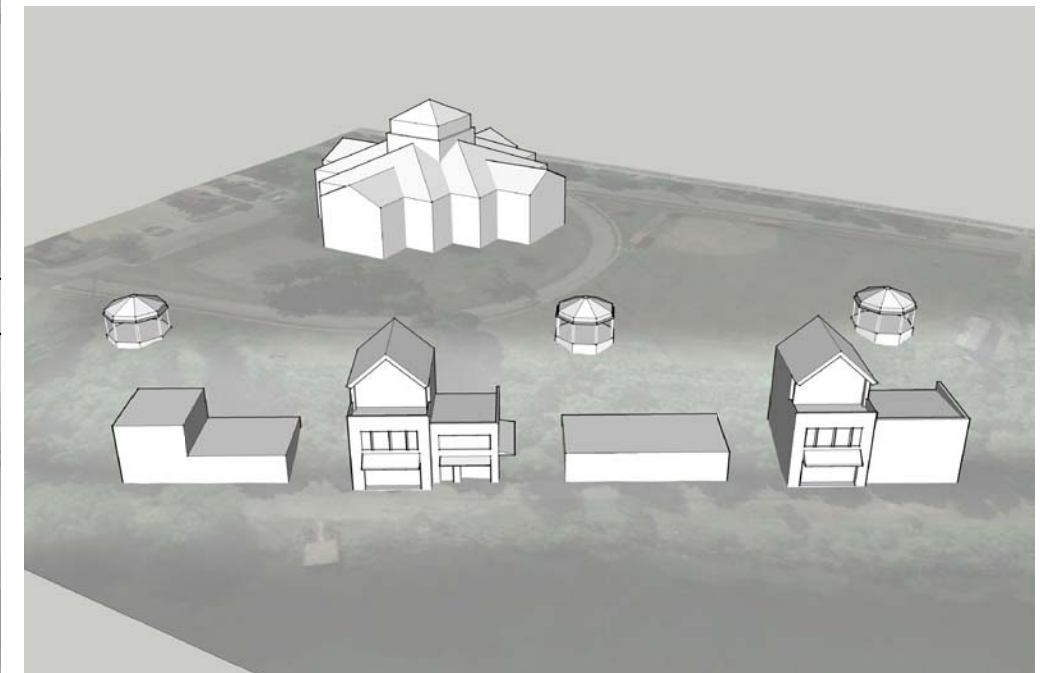
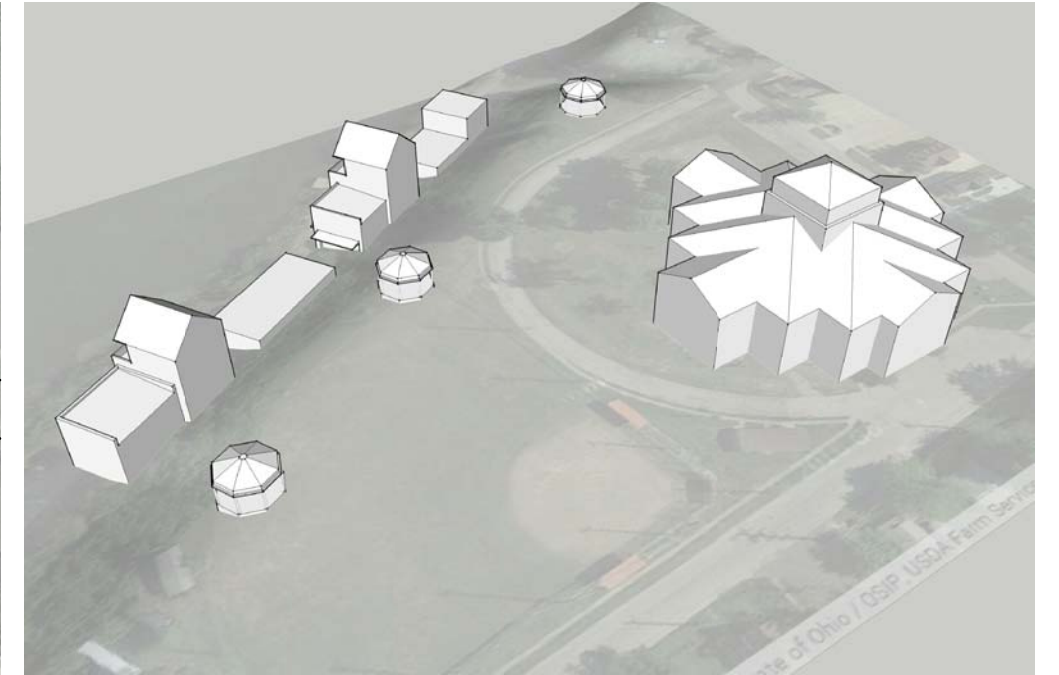
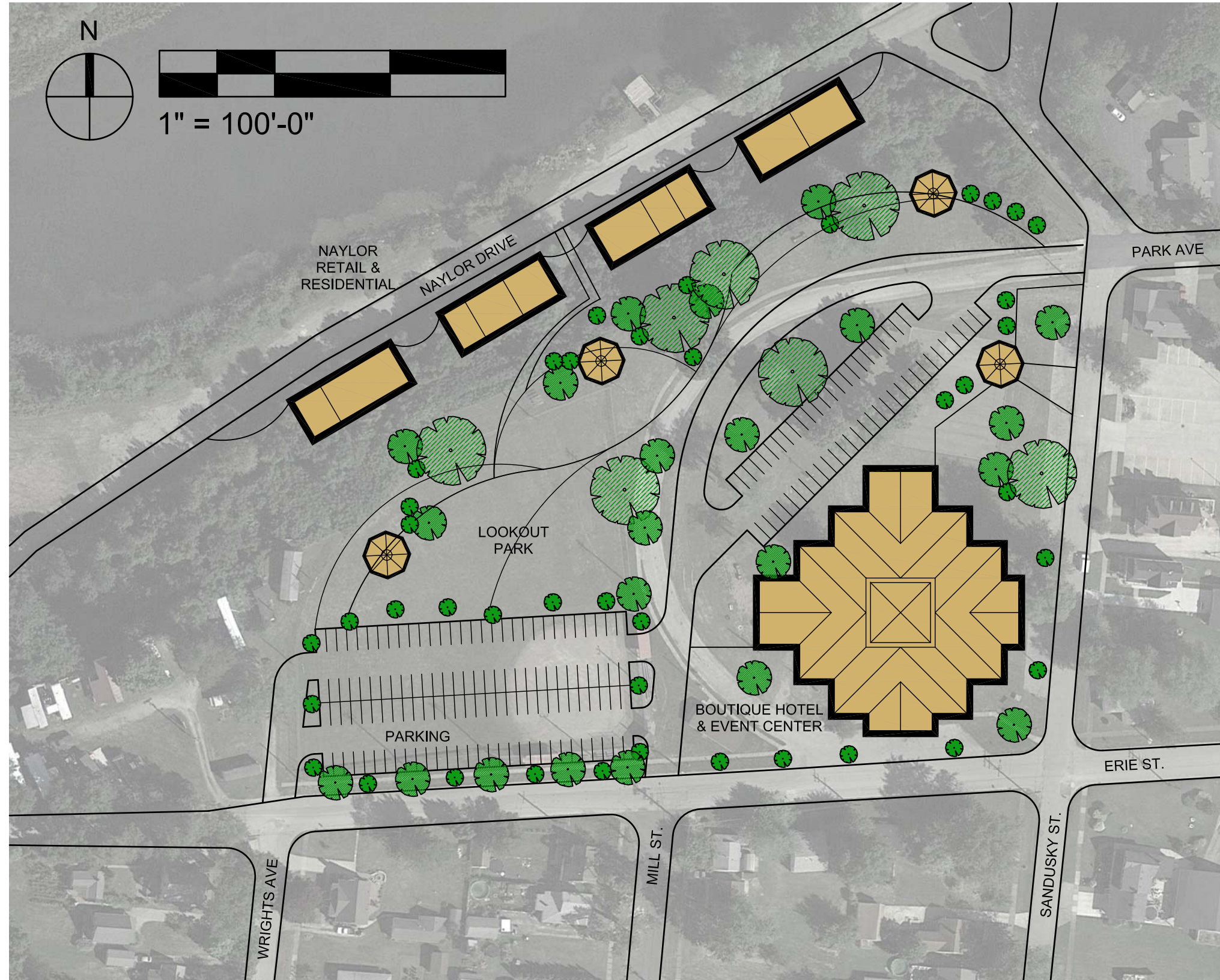


# Hilltop Development - Option #3

EVENTS CENTER W/ BOUTIQUE HOTEL  
& NAYLOR RETAIL

Areas:  
Retail - 16,500 SF  
Residential Condo - 16,500 SF  
Hotel - 85,000 SF  
Parking Spaces: 175

03





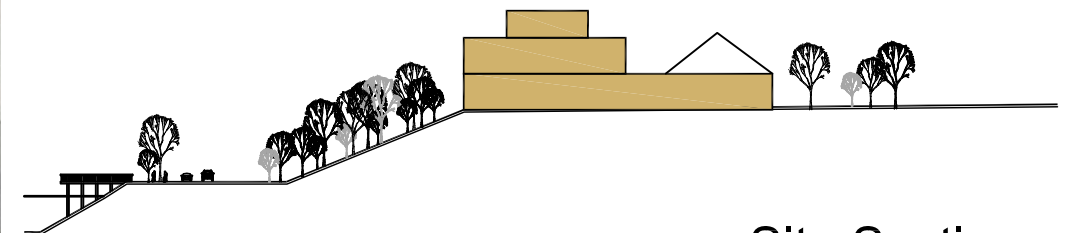
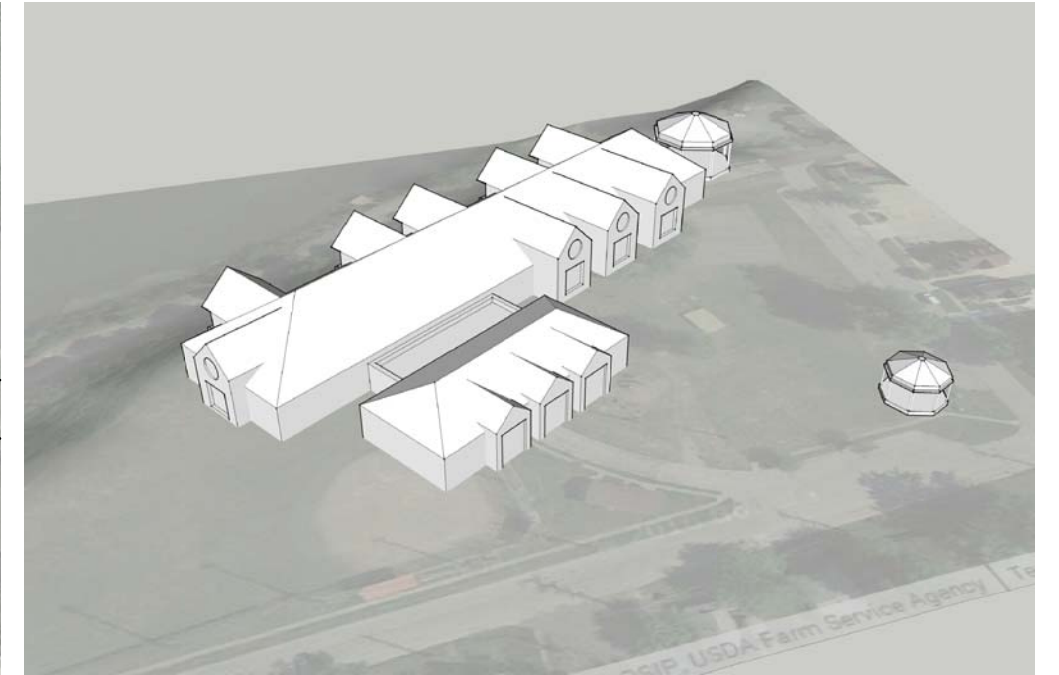
# Hilltop Development - Option #4

Areas:  
150,000 SF

04

## EVENTS CENTER & HOTEL

Parking Spaces: 175



Site Section





# Hilltop Development - Option #5

COMMUNITY EVENTS CENTER, COTTAGE HOTEL  
& NAYLOR RETAIL

Areas:

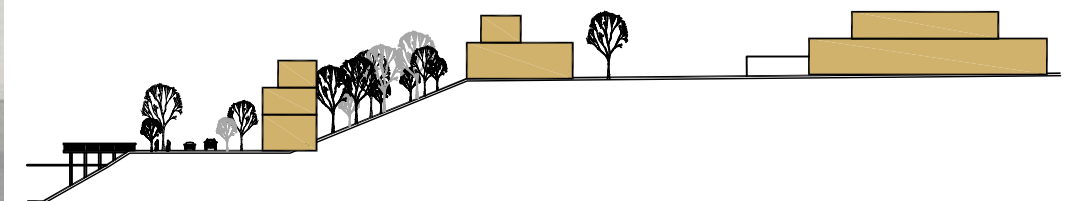
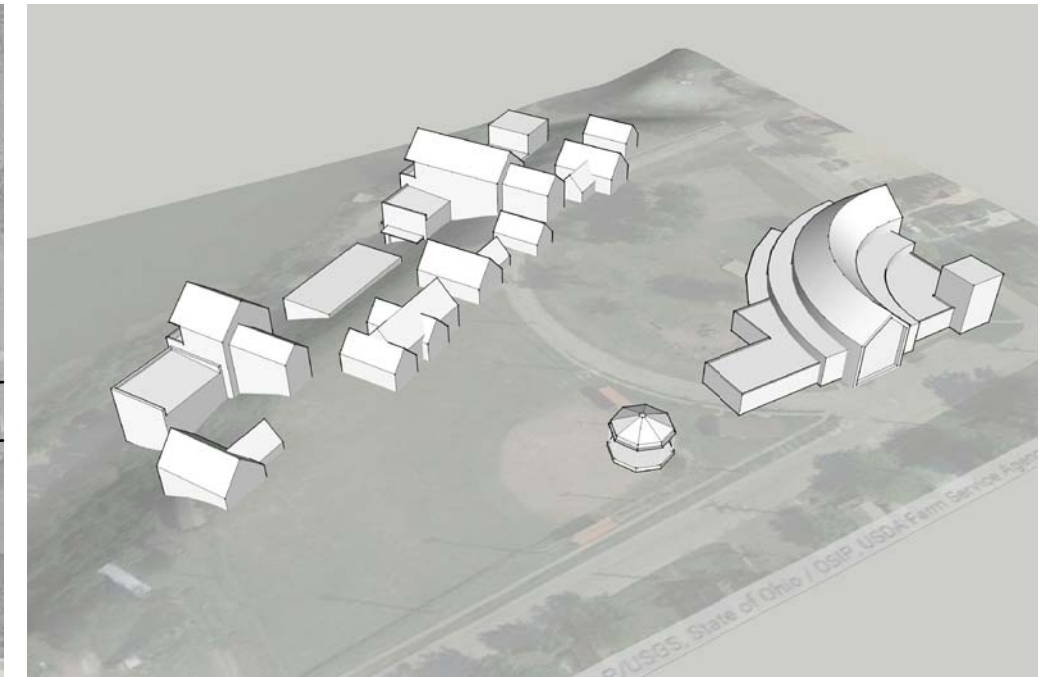
Retail - 16,500 SF

Residential & Cottage Hotel - 44,800 SF

Events Center - 37,500 SF

Parking Spaces: 215

05



Site Section



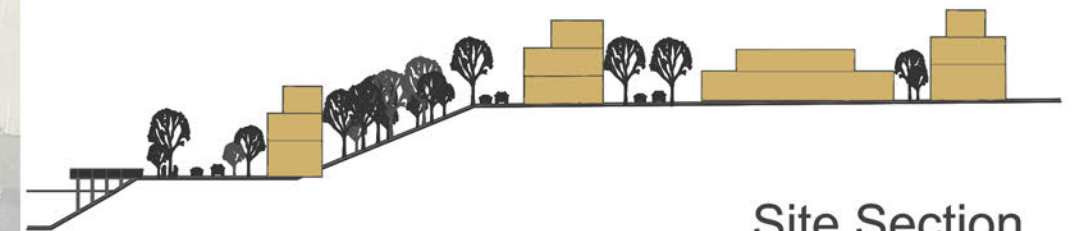


# Hilltop Development - Option #6

Condominium Clustered Development

Areas:  
Residential : 87,595 SF  
Parking Spaces: 108

# 06



Site Section

