

# CITY OF BRONSON COMMUNITY PARKS AND RECREATION PLAN

---

## PARKS AND RECREATION MASTER PLAN

**2016-2020**



# **ACKNOWLEDGEMENTS**

## **CITY COUNCIL**

Alicia Cole

*Mayor*

Larry McConn

*Vice Mayor*

Bill Earl

*Council Member*

Janet Cox

*Council Member*

Jim Kenny

*Council Member*

## **STAFF**

Brandon Mersman

*City Manager*

Karen Smith

*City Clerk/Treasurer*

Lori Buys

*Administrative Assistant*

# **CITY OF BRONSON**

141 S. Matteson Street—Bronson, MI 49028—(517) 369-7334

## **CITY OF BRONSON**

### **RECREATION PLAN 2016-2020**

#### **TABLE OF CONTENTS**

I.	Introduction .....	4
II.	Administrative Structure .....	7
III.	Inventory of Existing Parks and Recreation Facilities.....	9
IV.	Planning Process.....	18
V.	Public Input Process.....	18
VI.	Goals and Objectives.....	19
VII.	Action Program.....	21

## I. INTRODUCTION

The 2016-2020 City of Bronson Community Recreation Plan was prepared by community officials to serve as a guide for future decision-making regarding recreational facility improvements and programs. This plan is the first five (5) year parks and recreation master plan that the City has developed and will serve as a decision making tool for the next five (5) years.

The plan examines existing parks and recreation along with future opportunities and needs for the community and is intended to guide current and future decision makers in developing and improving community parks. The intent of this plan is also to enable the City of Bronson to apply for Federal and State grant programs that will assist in the funding of future projects.

This parks and recreation master plan was prepared for the City of Bronson but also examines parks and recreation opportunities that are available in neighboring communities.

### COMMUNITY DESCRIPTION

#### Overview

The City of Bronson is located in the southwestern area of Branch County, which is mostly rural, located near the southern border of the mitt of Lower Michigan. Bronson is about 1.4 square miles in size, about 8 miles north from the Indiana boarder, at 41°52'20"N (Latitude), 85°11'41"W (Longitude). The City is 12 miles southwest of Coldwater, 12 miles northeast of Sturgis, 40 miles south of Battle Creek, and 56 miles southeast of Kalamazoo. The City of Bronson is bounded by Bronson Township to the north, west, south and bounded by Bethel Township to the east. The City is bisected by US-12 (also known as Chicago Street).

The main uses of land in the City are residential, commercial, industrial, public space, and agriculture. The city is in the Bronson Community School District.



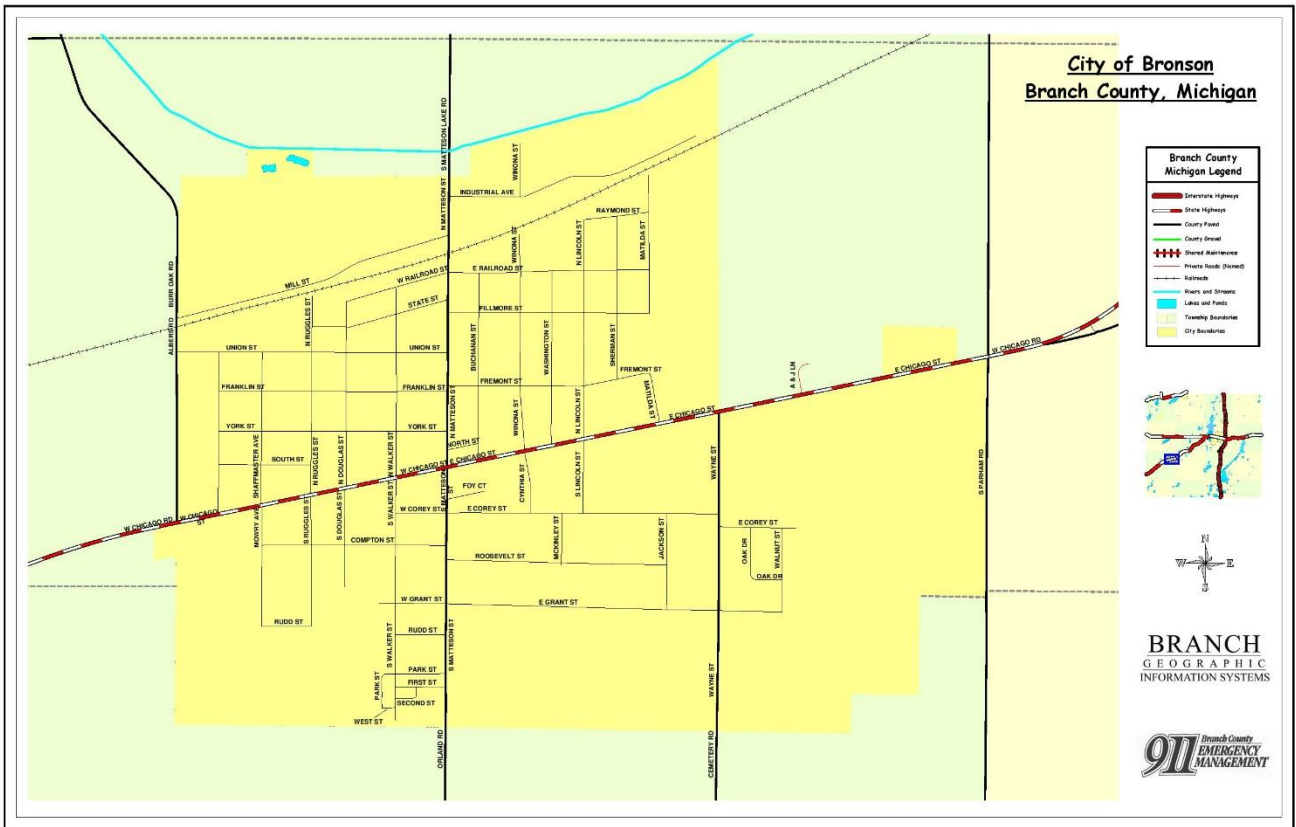


Figure 1- City of Bronson Map

## Population

According to the 2010 Census, the population in the City of Bronson was 2,349. This represents a 2.97 reduction from the 2000 census of 2,421, as shown in Figure 2. By comparison, Branch County lost 1.18 percent and the State of Michigan lost .612 percent. Since 2010, Census developed population estimates for the year 2014, and for the City of Bronson, it was estimated there was a loss of about 24 people (2,325 total), a 1.02 percent decline.

	1990	2000	2010	Percent
<b>City of Bronson</b>	2,342	2,421	2,349	-2.97%
<b>Branch County</b>	41,502	45,787	45,248	-1.18%
<b>State of Michigan</b>	9,295,297	9,938,444	9,877,670	-0.612%

Figure 2- Recent Changes in Population Sizes US Census Data

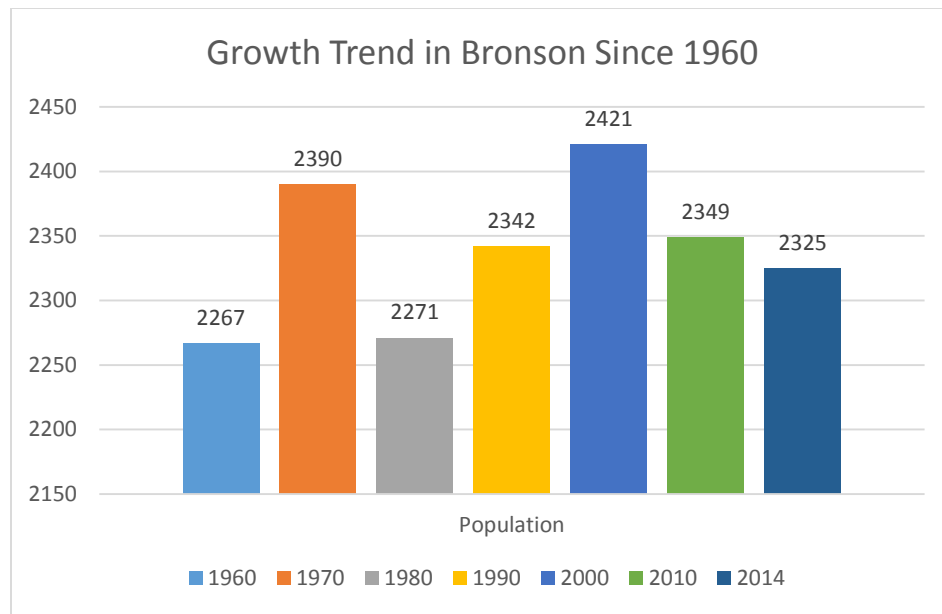


Figure 3- Growth Trend in Bronson Since 1960 (US Census Data)

The median age of Bronson residents in 2010 was 30.8 years which is much younger than the Michigan median age of 38.9 years. 15.4 percent of residents are Hispanic or Latino.

33.9 percent of residents in the past 12 months were below the poverty level with the per capita income being \$13,715 which demonstrates the need for affordable recreation opportunities (according to 2009-2013 American Community Survey 5-year estimates). All of the parks in the City of Bronson are free of charge to residents of the City, neighboring communities, and tourists.

### Household Data

	1990	2000	2010
<b>Households</b>	902	891	834
<b>Average Household Size</b>	2.60	2.71	2.8
<b>Median Age</b>	n.a.	31.8	30.8

Figure 4- Household Data (US Census Data)

Owner-occupied housing accounts for 531 of the total households or 63.7 percent. Renter-occupied housing units accounts for 303 households or 36.3 percent. 834 housing units are occupied or 88.2 percent of the total housing units (946 total). The average household size is 2.8 and the average family size is 3.33.

There are 339 (40.6 percent) households with individuals under 18 years and 200 with individuals over 65 years of age (24 percent). 310 or 37.2 percent of family households have children under 18 years. There are 568 households that have families or 68.1 percent of the City. This demonstrates the need for parks and recreation for people of all ages.

## Land Use

A Master Plan indicating the Future Land Use for the City of Bronson is included in Appendix A.

### *Natural Features:*

**Topography-** Bronson is characterized by flat topography. The City and most of the outlying areas in the surrounding townships have an elevation of about 918 feet above sea level, ranging from 885 to 935 feet.

**Soils-** Soils in Bronson consist of very deep well drained solids. The predominant series are Ormas, Branch, and Matherton. Corn and soybeans are the principle row crops. A few areas are used for pasture or wooded. Native vegetation is deciduous forest. Slopes range from 0 to 6 percent.

**Climate-** In the Bronson area, the July average temperature is a low of 59 degrees and a high of 82 degrees. The January minimum temperature is 15 degrees, with average highs near 30 degrees.

## II. ADMINISTRATIVE STRUCTURE

The City of Bronson is governed by a City Council made up for five members elected by the City residents. The City Manager oversees the day-to-day operations of the City with policy and legislative decisions made by City Council. The City Manager annually prepares the City budget, including the parks and recreation budget, with the City Council having final approval. The City Manager has primary responsibilities for the City's parks and recreation system and has the authority to accept grants under the direction of the City Council.

The administration, financing, and maintenance of the City park system are handled by the City Manager as directed by the City Council. The actual maintenance of City parks is performed by the City's Department of Public Works (DPW). The DPW has a staff of three (3) employees and are supervised by the Director of Utilities/Department of Public Works. Appendix B shows the City's organizational structure.

64 percent of the City's general fund revenues are derived from property taxes and 28 percent coming from State of Michigan revenue sharing. Parks and Recreation makes up 6 percent of the annual budget for the City.

For the 2016 fiscal year the City of Bronson has budgeted \$59,497 for parks and recreation operations, maintenance, and programming (see Figure 5). Figure 6 lays out the City's Capital Improvement Plan (CIP) for park improvements.

### FY2016 Parks and Recreation Budget

	2012/2013	2013/2014	2014/2015	2014/2015	2015/2016
<b>Parks &amp; Recreation</b>	Actual	Actual	Budget	Projected	Proposed
Wages & Benefits	17,001	12,380	13,374	6,524	11,797
Building Maintenance	2,372	5,226	2,000	819	6,500
Landscape Maintenance	4,896	6,345	8,500	11,380	10,500
Recreation Programing	11,000	11,000	11,000	3,400	11,000
Utilities	5,734	4,107	5,400	3,917	5,400
Service Contracts	5,578	10,469	7,250	8,200	8,500
Property & Liability Insurance	581	537	650	564	650
Vehicles & Equipment	480	504	6,313	4,200	5,150
<b>Total Parks &amp; Recreation</b>	<b>47,642</b>	<b>50,569</b>	<b>54,487</b>	<b>39,004</b>	<b>59,497</b>

Figure 5- Parks and Recreation Budget

### Parks and Recreation Capital Improvement Plan

<b>Parks &amp; Recreation</b>	2015/2016	2016/2017	2017/2018	2018/2019	2019/2020
<b>Capital Improvement Plan</b>	Budget	Projected	Projected	Projected	Projected
Memorial Park Improvements	10,000	15,000	5,000		
Greenwald Park Mulch Update		3,000			
Bronson's Backyard Repairs		2,000			
Douglas Park Building Updates	5,000				
Kiwanis Park Playground Enhancements			2,000	1,000	
Picnic Table Purchases			1,000	1,000	
Railroad Recreation Trail				7,000	7,000
Douglas Park Mulch Update					2,000
Kiwanis Park Bathroom Updates			5,000	2,000	
<b>Total</b>	<b>15,000</b>	<b>20,000</b>	<b>13,000</b>	<b>11,000</b>	<b>9,000</b>

Figure 6- Parks and Recreation Capital Improvement Plan

### Recreation Programming and the Role of Volunteers

City of Bronson and neighboring communities have partnered with the Bronson Youth Recreation Association (BYRA) to provide youth recreation programs for the greater Bronson community. BYRA is operated almost entirely through volunteers. BYRA provides a number of recreation programs for the youth of the community including; girls' softball, Little League, boys' baseball, soccer, Rocket football, and a Summer Park Program. These programs provide services to between six and seven hundred (600-700) area children each year. There is a director for each program who oversees the coaches and scheduling.

BYRA is comprised of representatives from the following organizations:

1. Bronson Community Schools
2. City of Bronson
3. Branch County United Way

4. Chamber of Commerce
5. Bronson Kiwanis Club
6. Bronson Rotary Club
7. Member at Large

The Summer Park Program also provides additional recreation activities for children. The program runs for six weeks each summer at the Douglas Park building and offers programs and games as well as special events. It is free of charge for children between the ages of 6 and 12. Free busing is also offered to bring children to and from swimming lessons at Heritage Park Pool.

The Bronson Youth Center also provides recreation and activities for children and is run by the Bronson School District. The Youth Center is housed at the Chicago Street School and offers workout equipment as well as tutoring and mentoring. The City of Bronson has a close working relationship with the Bronson School District and will continue to look for ways to partner together on Parks and Recreation.

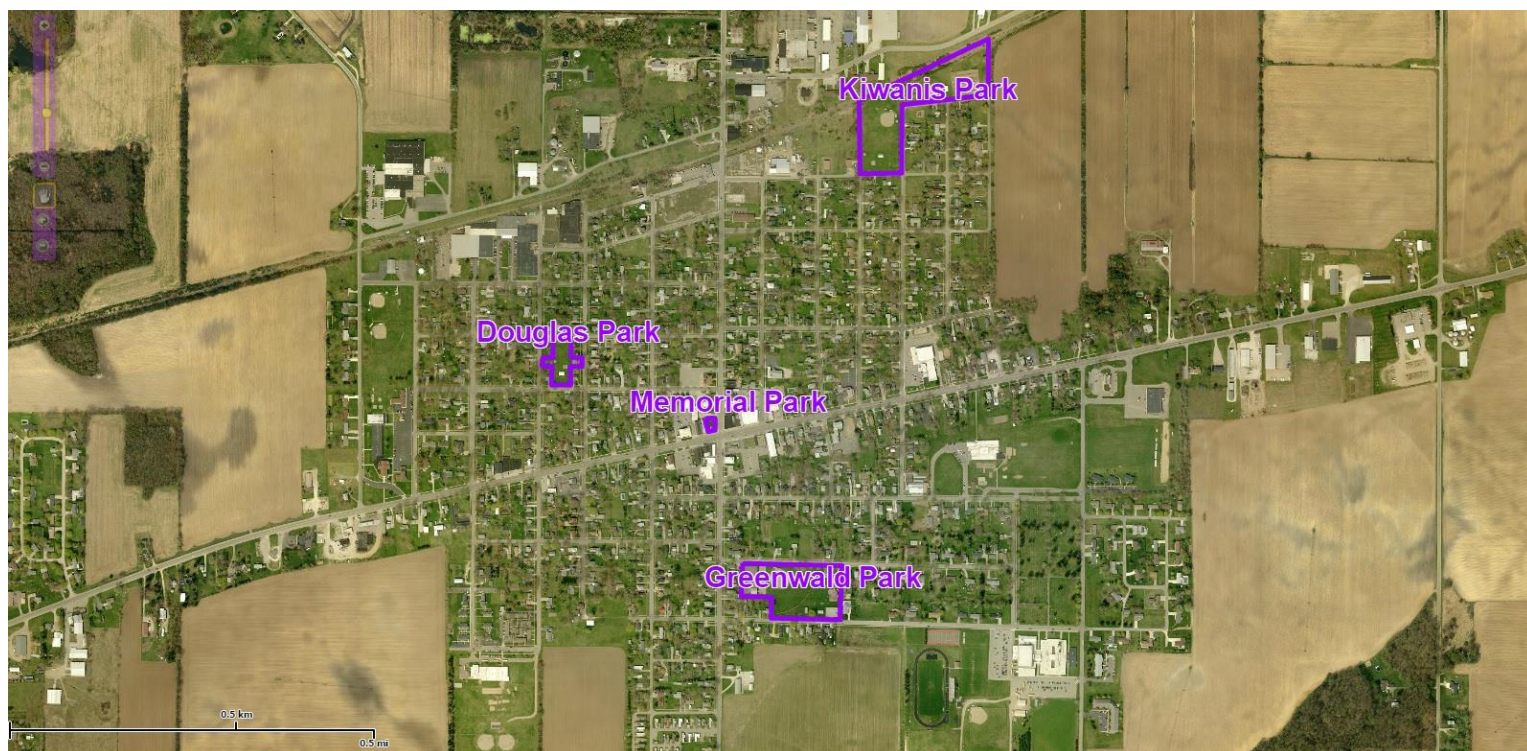
Volunteers and service organizations play a critical role for parks and recreation in the City of Bronson. Listed below are just a few of the many Parks and Recreation projects/outcomes provided by volunteers in the past:

- Bronson Youth Recreation Association Annual Recreation Programming
- Rubber safety mulch installation at Greenwald Park (Bronson's Backyard).
- Improved play areas, painted equipment, and placed new play equipment and park benches at Douglas Park as part of an Eagle Scout project performed by Ruhl Cook.

### III. RECREATION INVENTORY

A complete inventory of the City of Bronson park facilities was performed in order to determine the recreational needs for the future. The purpose of this inventory is to provide a complete description of the strengths and weaknesses of existing facilities and opportunities for the future.

The City of Bronson has four (4) City parks with a total of 8.7 acres of park land equaling 3.7 acres per thousand residents.



The MDNR establishes recommended service areas for each classification of parks. Mini-parks and neighborhood parks have a service area boundary of about  $\frac{1}{4}$  to  $\frac{1}{2}$  of a mile.

### Accessibility

The City parks were also given an accessibility rating based on the Americans with Disabilities Act (ADA) guidelines. A grading system was developed by the Michigan Department of Natural Resources in an effort to identify the accessibility of a park. The grading system is based on a five (5) point scale.

### MDNR Accessibility Grading System for Parks and Recreation Facilities

Accessibility Grade	Definition
1	None of the facilities/park areas meet accessibility guidelines
2	Some of the facilities/park areas meet accessibility guidelines
3	Most of the facilities/park areas meet accessibility guidelines
4	The entire park meets accessibility guidelines
5	The entire park was developed/renovated using the principles of universal design.

Figure 7-

**Mini-Parks-** A mini-park is defined as a park which addresses limited, isolated, or unique recreational needs. Mini-parks are usually less than  $\frac{1}{4}$  of a mile distance to a residential setting and are less than an acre in size. The City of Bronson has one (1) park that is classified as a mini-park.

### Memorial Park



**Size:** Approximately .0158 acres (689 square feet)

**Location:** Memorial Park is prominently located in Downtown Bronson at Chicago Street (US-12) and Matteson Street.

**Uses and Amenities:** Memorial park is host to the annual “Music in the Park” concert series. Each August the City and the Downtown Development Authority sponsor a series of concerts in the park every Monday night at 7:00 pm. The gazebo in the northwest portion of the park is used as the stage and residents can bring their own blanket or lawn chair and enjoy the music. The park is enjoyed as a resting spot for residents and shoppers using the downtown area. The space is also utilized for memorial ceremonies on Memorial Day and Veterans Day as well as during the Annual Polish Festival in July.

**Future Park Improvements:** The City is in the midst of a redevelopment project in this park in honor of longtime Mayor Thomas Rissman. Phase I of the project involved relocating the gazebo to the northwest corner of the park to accommodate larger crowds for the Music in the Park. Phase II involved a brick paved walk way leading through the park and was completed in late 2015. Phase III (2016-17) will involve the creation of a water feature and Phase IV will involve landscaping and irrigation improvements (2017-18). The funds for these phases are budgeted in the City’s Parks and Recreation Capital Improvement Plan (see Figure 6). See Appendix C for development plan for this park.

**Accessibility Rating:** 2- Some of the park meets accessibility guidelines. Ramp accessible sidewalk provides access to the other portion of the park and a pathway through the

park provides access to the memorials and the gazebo.



**Neighborhood Parks-** Neighborhood Parks are defined as the basic unit of the park system and typically serves a residential area of  $\frac{1}{4}$  to  $\frac{1}{2}$  mile distance. A size of 5-10 acres is considered optimal for this type of park. This type of park has a focus on informal active and passive recreation.

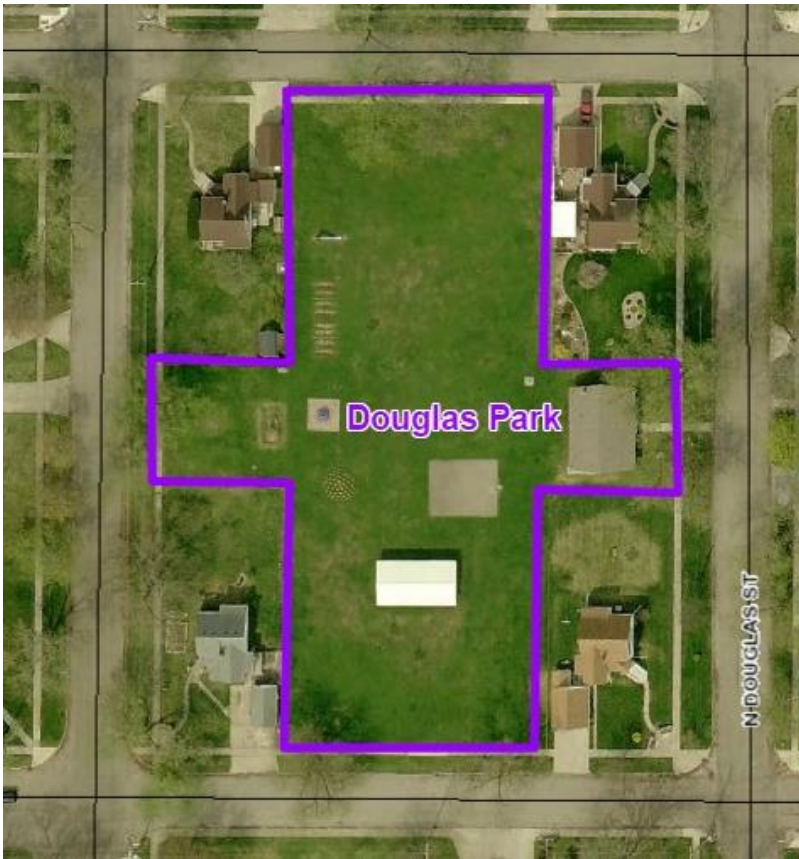
#### Douglas Park

**Size:** 1.27 acres

**Location:** Douglas Park is bordered by North Douglas Street to the east, Franklin Street to the north, North Ruggles to the west, and York Street to the south.

**Use and Amenities:** Douglas Park features an open grass area, playground equipment, benches, picnic pavilion, basketball court, and a brick building with space for events. The playground features a jungle gym, swing set, and slide with blue rubber safety mulch which was added in 2013. The brick building is used by local organizations like the Girl Scouts and Brownies for meetings. The building is also available for private events for residents and non-residents for a small fee. Douglas Park is host to the annual kid's day held during the Polish Festival in July.

**Accessibility Rating:** 2- Some of the park and facilities meets accessibility guidelines. The two restrooms in the park building will be reconstructed and turned into one handicap accessible restroom during the 2015-2016 fiscal year.



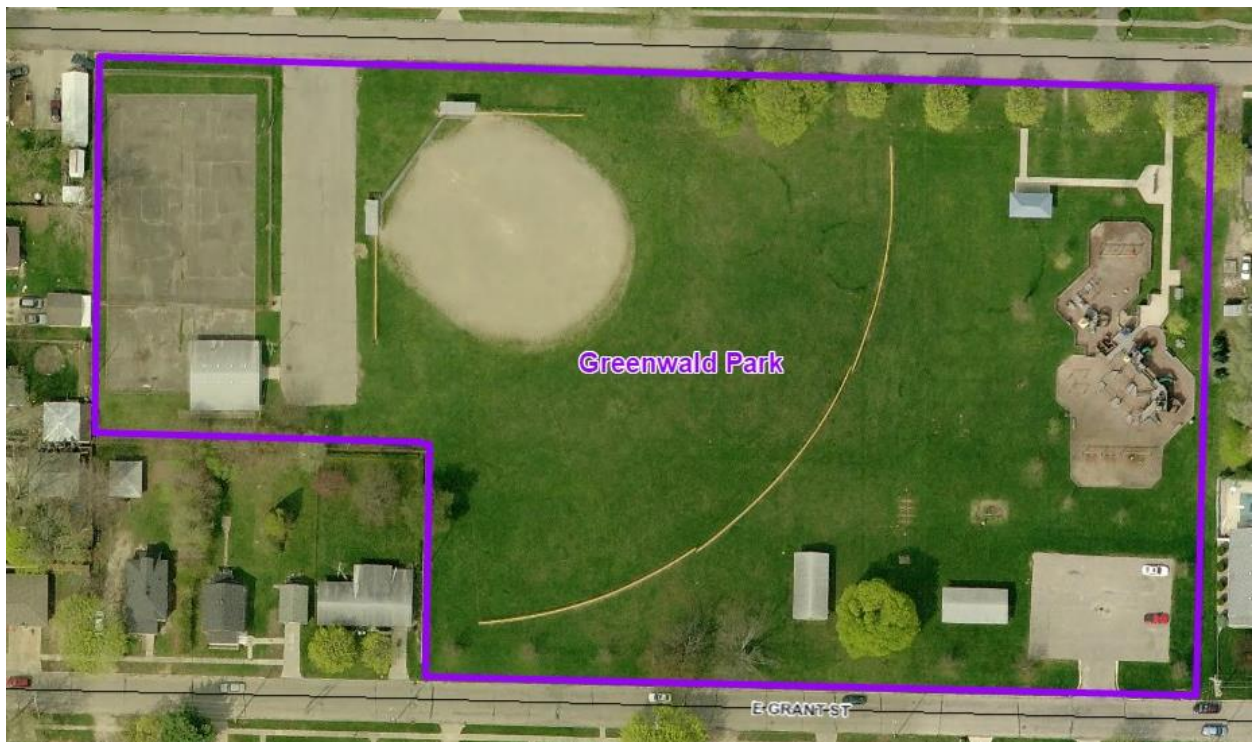
#### Greenwald Park (Bronson's Backyard)

**Size:** 5.42 acres

**Location:** Greenwald Park is bordered by East Grant Street to the south, Roosevelt Street to the north, and residential housing to the east and west.

**Use and Amenities:** Greenwald Park is the largest of the City parks. Features of this park include a large playground known as the Bronson's Backyard. The 10,000 square foot structure was built in 2000 by the community. Greenwald Park also features a baseball diamond with dugouts, jungle gym, swing set, restroom building, two (2) covered picnic pavilions, and a park building. The park building is used by local non-profit organizations and for private events for a small fee.

**Accessibility Rating:** 2- Some of the park and facilities meet ADA accessible guidelines.



### Kiwanis Park

**Size:** 2 acres

**Location:** Kiwanis Park is located in the north east portion of the City. The land was donated by the Bronson Kiwanis Club and designated as a public park. The park is bordered by E. Railroad Street in the southwest, North Lincoln Street to the southeast, Raymond Street to the south west and Matilda Street to the northeast. The northern boundary of the park is bordered by the former Indiana Northeastern Railroad Company rail line that passed through the City.

**Use and Amenities:** The Park features two picnic pavilions, the Community Garden, basketball court, slide, swing set, animal springers, baseball/softball field with dugouts, six (6) sets of horseshoe pits, open space, and restroom building.

**Accessibility Rating-** 1- None of the site elements meet 2010 ADA Standards for Accessible Design.



#### Future Recreation Connector Trail (Former Indiana Northeastern Rail Line):

In 2014, the City finalized the purchase of abandoned rail line property which passes through the City near the northern border. A Phase I environmental study of the property was performed during the purchase process and the rails have been removed. The City purchased this property with the goal of making this a recreational connector trail for the community connecting Kiwanis Park and the other parks of the community through the existing sidewalk network. Substantial clear cutting and site preparation is needed prior to developing this trail. The trail property is approximately two thirds (2/3) of a mile in length with a width of about 150 feet. The potential also exists to make this a connector trail to a regional trail connecting Coldwater, Quincy, and Jonesville.

**Bronson Jr./Sr. High-** The site features five (5) tennis courts, six (6) lane track, three (3) baseball diamonds, a gymnasium, and a football/soccer field.

**Bronson Strike Zone Bowling Alley**-The Bronson Strike Zone Bowling Alley provides recreation to the City and surrounding areas. The Strike Zoning provides both bowling (16 lanes) and seasonal beach volleyball leagues (outdoors).

**Saint Mary's Assumption Church and School**- The Saint Mary's Assumption Church and school owns and maintains two baseball diamonds behind the church and school. The fields are used by the Bronson Youth Recreation Association Little League. The site also features playground equipment.

## Regional Recreation Facilities and Opportunities

Regional parks are classified as parks able to serve communities within a one-hour drive time and are usually larger than 200 acres. Regional parks are typically made of land set aside for preservation of natural beauty or environmental significance, recreation use, historical, or cultural interest use. There are a number of regional and Branch County parks within an hour drive time of the City of Bronson.

**Coldwater Linear Park (Coldwater, Michigan)** – This City of Coldwater Park Offers mogul fields built for mountain biking and is over 25 acres in size.

**Heritage Recreation Area (Coldwater, Michigan)** – City of Coldwater Park featuring an Olympic sized swimming pool and waterslide, softball and soccer fields, winding paved trail, tennis courts, sledding hill, and a skate park.

**Memorial Park (Coldwater, Michigan)** –Branch County Park located on Messenger Lake, west of Downtown Coldwater. The 30 acre site features boat launches, restrooms, parking, campgrounds, picnic facilities, public beaches, and athletic facilities.

**Angel Cove Park (Coldwater, Michigan)** - Branch County Park located west of Coldwater. The park is approximately 6 acres and features boat launches, restrooms, and a campground.

**Gilead Lake Park (Bronson, Michigan)**- Branch County Park located in Gilead Township. This park is located 6 miles south of Bronson.

**Quincy Marble Lake Campgrounds (Quincy, Michigan)**- Branch County Park located in Quincy. The park is approximately 60 acres with boat launches, restrooms, parking, campgrounds, picnic facilities, and public beaches.

**Riverbend Park (Union City, Michigan)**- Branch County Park located northwest of Coldwater on Union City Road this park is 25 acres with picnic facilities and canoe access.

**Pahl Point Park (Centerville, Michigan)** - 15 acre site along the St. Joseph River north of Centerville. The site offers a gravel access road and parking, restrooms, picnic facilities, and nature trails.

**Covered Bridge Park (Centerville, Michigan)** - 12 acre waterfront site located on the south side of St. Joseph River opposite Pahl Point Park. The park features water access to the river for small boats, gravel parking, picnic facilities, picnic shelter, restrooms, nature trails, nature pond, and play equipment.

**Doyle Community Center Indoor Facility (Sturgis, Michigan)**- Located on North Franks Avenue in Sturgis, the Doyle Community Center is a 75,000 square foot facility that houses a range of recreational facilities. The center features three (3) fitness rooms used for cardiovascular equipment, training, and free weights; an aerobics, dance, and martial arts room; childcare; four (4) multipurpose courts designed for tennis, basketball, volleyball, roller hockey, and indoor soccer; one (1) racquetball court; and a four (4) lane indoor walking/running track. The facility is a membership-based facility.

### **Parks and Recreation Grant History**

To date, the City has not received any grant funding from the Michigan Department of Natural Resources Trust Fund, Passport, or Land and Water Conservation Fund. The goal of this 5 Year Parks and Recreation Master Plan is to gain eligibility for these grant programs.

## **IV. PLANNING PROCESS**

The 2016-2020 City of Bronson Community Recreation Plan was prepared by city officials to serve as a guide for future decision-making regarding recreational facility improvements and programs.

The plan examines existing parks and recreation along with future opportunities and needs for the community.

This parks and recreation master plan was prepared by the City of Bronson. Demographics and statistical data was gathered using the City of Bronson Master Plan, 2010 U.S. Census data, and 2009-2013 American Community Survey Estimates. Recreation inventory data was collected by City staff about the four city parks with mapping imagery created using the City's GIS software.

Two opportunities were provided for public input and participation during the development of this plan. The first opportunity was a community survey, the results of which will be discussed in the next section. The survey was open from December 29, 2015 until January 12, 2016. The second opportunity for input was provided during a public hearing at the City Council at a special governmental meeting.

Based upon staff input, Council input and survey responses, staff developed goals for parks and recreation in the City of Bronson. An action plan was developed using the same process. The completed draft Parks and Recreation Master Plan was developed by City staff and was released for comment from the public through the City's website, at City Hall, and on the City's Facebook page. The draft was available for thirty (30) days to provide an opportunity for residents and stakeholders to review the draft plan.

## **V. PUBLIC INPUT PROCESS**

In order to comply with the Michigan Department of Natural Resources' *Guidelines for the Development of Community Park, Recreation, Open Space, and Greenway Plans*, The City of Bronson offered two different types of public input opportunities. The first was a community survey that allowed public input for a two week period. The draft plan was also made available for comment for a 30 day period. The second input method was a public hearing at a City Council meeting prior to the adoption of the plan by resolution.

The online survey was developed and publicized through the City's Facebook page, the City's website, and posting at the Bronson Library. Paper copies of the survey were left at City Hall and at the Bronson Public Library as well for those without computer access. Informational flyers were posted with multiple copies at City Hall and at the Library to inform residents about the survey along with an easy to follow link address to take the survey online. Several attempts were made to get surveys to people of all ages and socio-economic backgrounds. The City also made contact with the Bronson School District to encourage participation from youth. The survey and survey results are attached in Appendix D and Appendix E. Survey responses included residents of all ages, households, and length of residency. While not scientific, the survey is representative of the input of the community as a whole.

A 30-day comment period was held in January and February; a public hearing was advertised in the Daily Reporter and the public hearing was held on February 22, 2016 to collect comments on the final draft of the plan and input on Parks and Recreation in the City of Bronson (see Appendix F for Plan Adoption Documentation)

## VI. GOALS AND OBJECTIVES

This section outlines the goals and objectives the City has for Parks and Recreation over the next five (5) years. The formation of these goals was based on public input gathered during the Community Survey process as well as input from the City Council.

### GOAL #1: MAINTAIN AND IMPROVE PARKS

As park facilities age and with wear and tear on equipment and facilities it is important to renew the City of Bronson's focus on high standards for Parks and Recreation.

#### OBJECTIVES

- Determine what facilities and equipment has outlived their useful life and determine a plan for renovation, replacement, or elimination. It is also important to explore ways to improve upon existing parks by the addition of new amenities.
- Ensuring Parks safety is also paramount to the City.

#### POTENTIAL ACTIONS

- Develop a list of existing playground equipment with ratings based on condition.
- Implement annual playground safety inspections and logs to ensure safety.

- Install rubber mulch under play equipment at Kiwanis Park. This can be done by applying for a grant through the City's liability insurance carrier. Continue to monitor and level existing rubber mulch in Greenwald Park and Douglas Park to maintain a safe play environment. Funds have been budgeted for mulch updates to Greenwald Park in 2016/2017.
- Look for ways to renovate, replace or eliminate existing facilities and equipment to improve the appearance and usefulness of City Parks.
- Explore additional amenities that could be added to existing parks including but not limited to; a dog park, disc golf, soccer fields, benches, drinking fountains, ice skating, splash pad, and additional playground equipment. These items all ranked high in the community survey that was conducted.

## GOAL #2: DEVELOP NORTHEASTERN RAILROAD PROPERTY INTO NON-MOTORIZED TRAIL

In 2014, the City purchased the abandoned rail line property which passes through the City East and West and is located near the northern border of the City.

### OBJECTIVES

The City purchased this property with the goal of making this a recreational connector trail for the community connecting Kiwanis Park and the other parks of the community through the existing sidewalk network to provide for increased recreational opportunities. The City also purchased this property with the intent of working with neighboring communities to make this abandoned line into a regional trail connecting Coldwater, Quincy, and Jonesville. Increased access to non-motorized pathways will increase the health and quality of life for the residents of Bronson as well as residents of neighboring communities and tourists. The community survey demonstrated overwhelming support for the creation of this trail as well as exploring the utilization of this trail as part of a regional trail network.

### POTENTIAL ACTIONS

- Clear cut and prepare site as needed. The trail property is approximately two thirds (2/3) of a mile in length with a width of about 150 feet.
- Pave trail with hot-mix asphalt using Universal Design.
- Work towards developing a scope of work and design for the trail along with associated costs.
- Work with neighboring communities towards the development of this rail line as a regional trail.

## GOAL #3: DEVELOP EXISTING PARKS AND FACILITIES TO ENSURE ACCESSIBILITY TO ALL VISITORS

In an effort to ensure that the City Parks and facilities are accessible to everyone regardless of disability, existing parks will need to be improved and upgraded to be ADA/Universal Design compliant.

## OBJECTIVES

Update/renovate parks to achieve ADA/Universal design compliance as funds become available.

## POTENTIAL ACTIONS

- Increase accessibility of the existing playgrounds.
- Maintain and increase (as needed) accessible parking at City Parks.
- Increase accessibility of existing restrooms and Park facilities.
- Pave trails and non-motorized pathways throughout existing parks. Creating walking paths and trails throughout City Parks ranked very highly during the public input process.

## GOAL #4 RECREATION PROGRAMMING

In an effort to promote healthy and active lifestyles for residents of all ages in the City it is important to continue to work with local organizations like the Bronson Youth Recreation Association and others to provide recreation opportunities for all ages and backgrounds. The community expressed great interest during public input process for additional programming for youth, teens, and adults.

## OBJECTIVES

Provide and/or facilitate opportunities for residents of all ages to participate in recreational activities.

## POTENTIAL ACTIONS

- Continue to work with the Bronson Youth Recreation Association and Bronson School District to provide sports and activity programs for youths and teenagers.
- Explore opportunities for sports and other recreation activities for adults as well as seniors.
- Explore new partnerships with area organizations to provide programming utilizing City Parks and facilities.
- Modify and improve existing facilities and parks to accommodate recreation needs for residents of all age groups.

## VII. ACTION PROGRAM

The Action Program explains how investments are proposed to be allocated over the course of the next five years. The Goals and Objectives, from the previous section, serve as a guideline for the development of the Action Program to determine a possible time line for improvements. The Parks and Recreation Capital Improvement Plan projects the potential expenditures for the next five years needed to begin working towards the Goals and Objectives of the Parks and Recreation Master Plan. This period of time will not be sufficient to accomplish all of the goals and objectives but it begins the process of achieving these goals.

This is also not an exhaustive list of potential projects as additional projects may arise in the future that are currently unknown.

<b>Parks and Recreation Capital Improvement Plan</b>					
<b>Parks &amp; Recreation Capital Improvement Plan</b>	<b>2015/2016 Budget</b>	<b>2016/2017 Projected</b>	<b>2017/2018 Projected</b>	<b>2018/2019 Projected</b>	<b>2019/2020 Projected</b>
Memorial Park Improvements	10,000	15,000	5,000		
Greenwald Park Mulch Update		3,000			
Bronson's Backyard Repairs		2,000			
Douglas Park Building Updates	5,000				
Kiwanis Park Playground Enhancements			2,000	1,000	
Picnic Table Purchases			1,000	1,000	
Railroad Recreation Trail				7,000	7,000
Douglas Park Mulch Update					2,000
Kiwanis Park Bathroom Updates			5,000	2,000	
<b>Total</b>	<b>15,000</b>	<b>20,000</b>	<b>13,000</b>	<b>11,000</b>	<b>9,000</b>

#### *Goal #1: Maintain and Improve Parks*

The planned improvements to Memorial Park; Greenwald and Douglas Park mulch updates, Bronson's Backyard repairs, Douglas Park building updates, Kiwanis Park playground enhancements, picnic table purchases, and Kiwanis Park bathroom updates, are all measures to help the City meet the Goals and Objectives #1 from the previous section. These specific projects will begin working towards this broad goal of maintaining and improving City Parks over the next five (5) years. The City will also explore adding the additional amenities to existing parks as funding becomes available.

#### *Goal #2: Develop Northeastern Railroad Property into Non-motorized Trail*

The City will continue to work towards a plan to develop the abandoned Northeastern Rail into a non-motorized trail and will work to determine the Scope of Work needed to construct the trail. The City will also continue to explore partnerships to make this a regional connector trail connecting Quincy, Coldwater, and Jonesville. The City has \$7,000 budgeted for 2018/2019 and \$7,000 budgeted in 2019/2020 for this project.

#### *Goal #3: Develop Existing Parks and Facilities to Ensure Accessibility to all Visitors*

Updates to the Kiwanis Park restroom and Douglas Park restroom will help the City work towards Goal #3 (Develop Existing Parks and Facilities to Ensure Accessibility to all Visitors). Modifications will make restrooms handicap accessible at both of these parks. The City will also look for ways to work towards this goal by exploring funding possibilities for non-motorized trails and increased access to parks for those with disabilities.

#### *Goal #4: Recreation Programming*

The City will continue to provide annual funding for the Bronson Youth Recreation Association and Bronson Youth Center (see Figure 5 on page 8) as long as it is financially able to do so. Currently this amounts to \$11,000 annually. The City will also explore ways to work with these organizations and others to offer or facilitate recreation programming for residents of all ages.

*Funding Sources:*

Funding for parks and recreation improvements comes from a variety of sources including local, state, and federal programs. One of the goals of the Parks and Recreation Master Plan is to apply for state grant funding opportunities as well as other grant opportunities through public or private organizations.

# City of Bronson

## Future Land Use

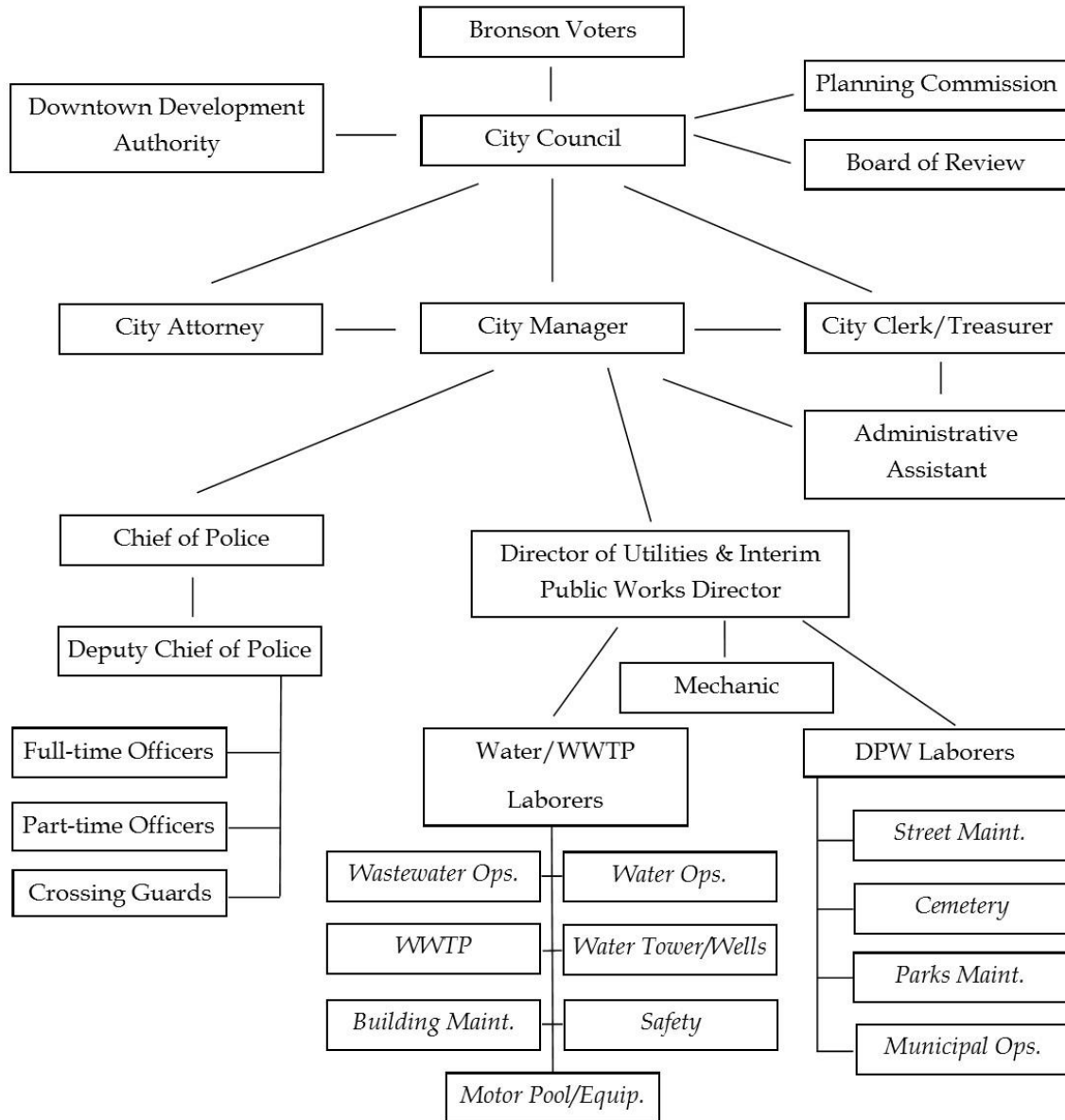


## Appendix B



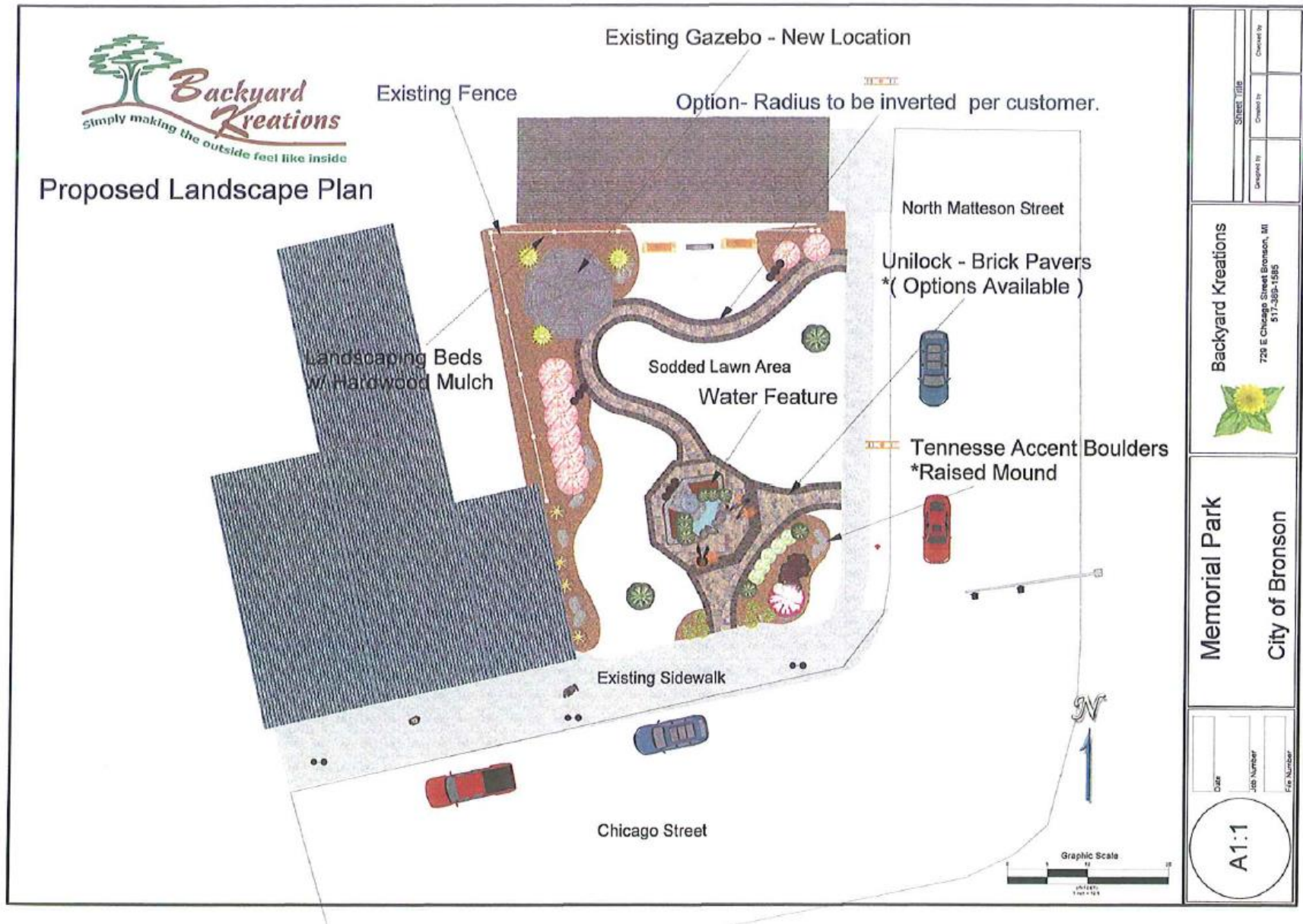
### Organization Chart

November 2015



## Appendix C (Page 1 of 2)

### Memorial Park Redesign



## Appendix C (Page 2 of 2)

### Memorial Park Redesign



**Appendix D**  
**Survey Questions and Summary of Survey Results**

## **Appendix E- Detailed Survey Results**

## **Appendix F- Plan Adoption Documentation**