

# CITY OF BUTLER, INDIANA ONLINE ZONING INFORMATION

- [City of Butler Zoning Ordinance – Full Searchable Edition](#)
- [City of Butler Website](#)
- [The Roads to Butler’s Future](#)



## Accessing City of Butler, Indiana Online Zoning Information

You can now access Butler zoning information from the Beacon-DeKalb GIS website. Following is a how-to for accessing zoning information for parcels of real estate within the City of Butler Corporate Limits and the Butler Extra-Territorial Jurisdiction:

[AG](#)

[GB](#)

[HI](#)

[INS](#)

[LI](#)

[MFR](#)

[MHC](#)

[NB](#)

[OTR](#)

[REC](#)

[SFR](#)

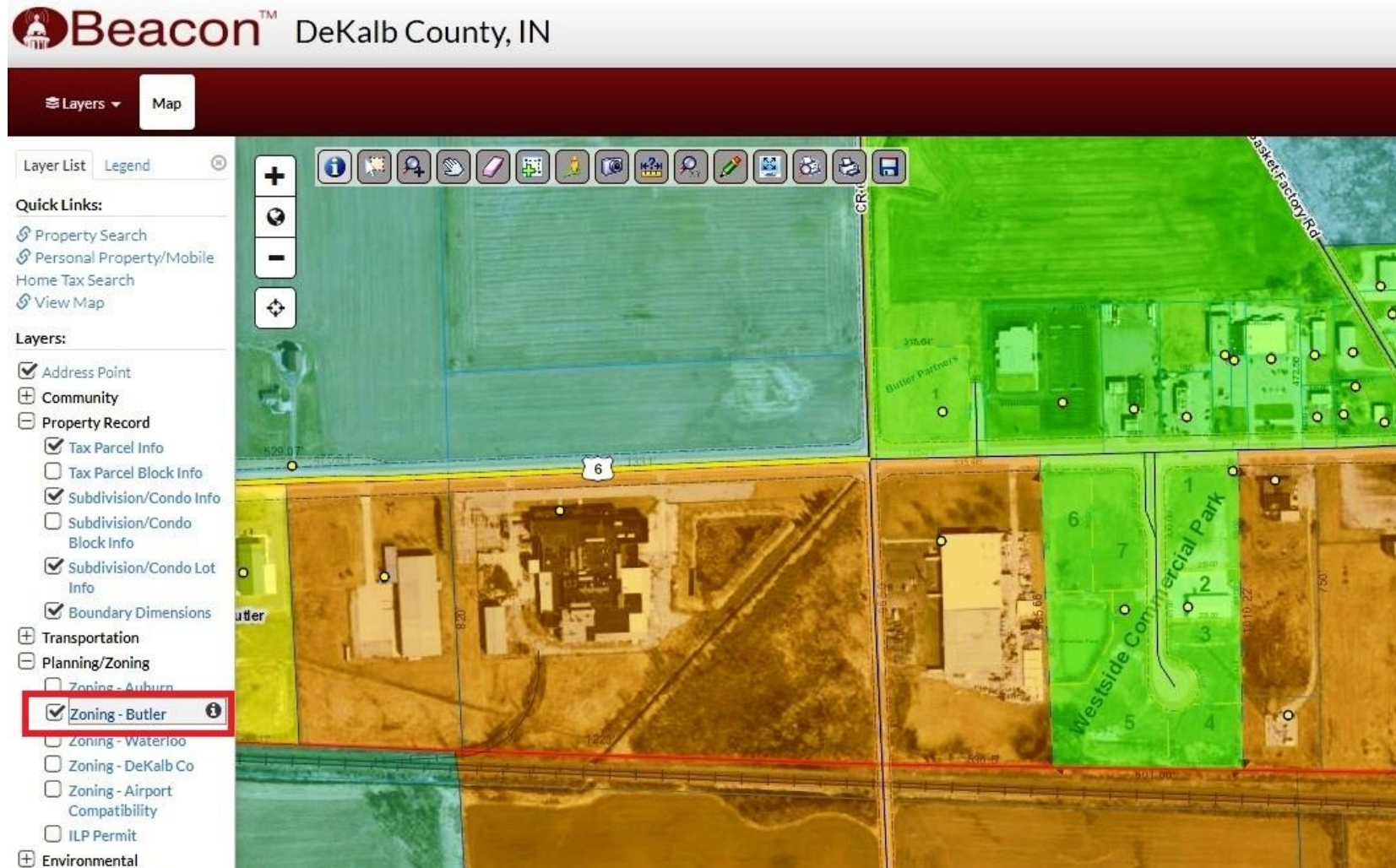
[WP-OL](#)

# CITY OF BUTLER, INDIANA ONLINE ZONING MAP

- [City of Butler Zoning Ordinance – Full Searchable Edition](#)
- [City of Butler Website](#)
- [The Roads to Butler’s Future](#)



1. Go to the “Map” portion of the [Beacon-DeKalb website](#). In the layer list, under “Planning / Zoning,” click on the check-box for “Zoning-Butler” as outlined in the red box below. Click again on the word “Butler” to activate the “i” info icon.



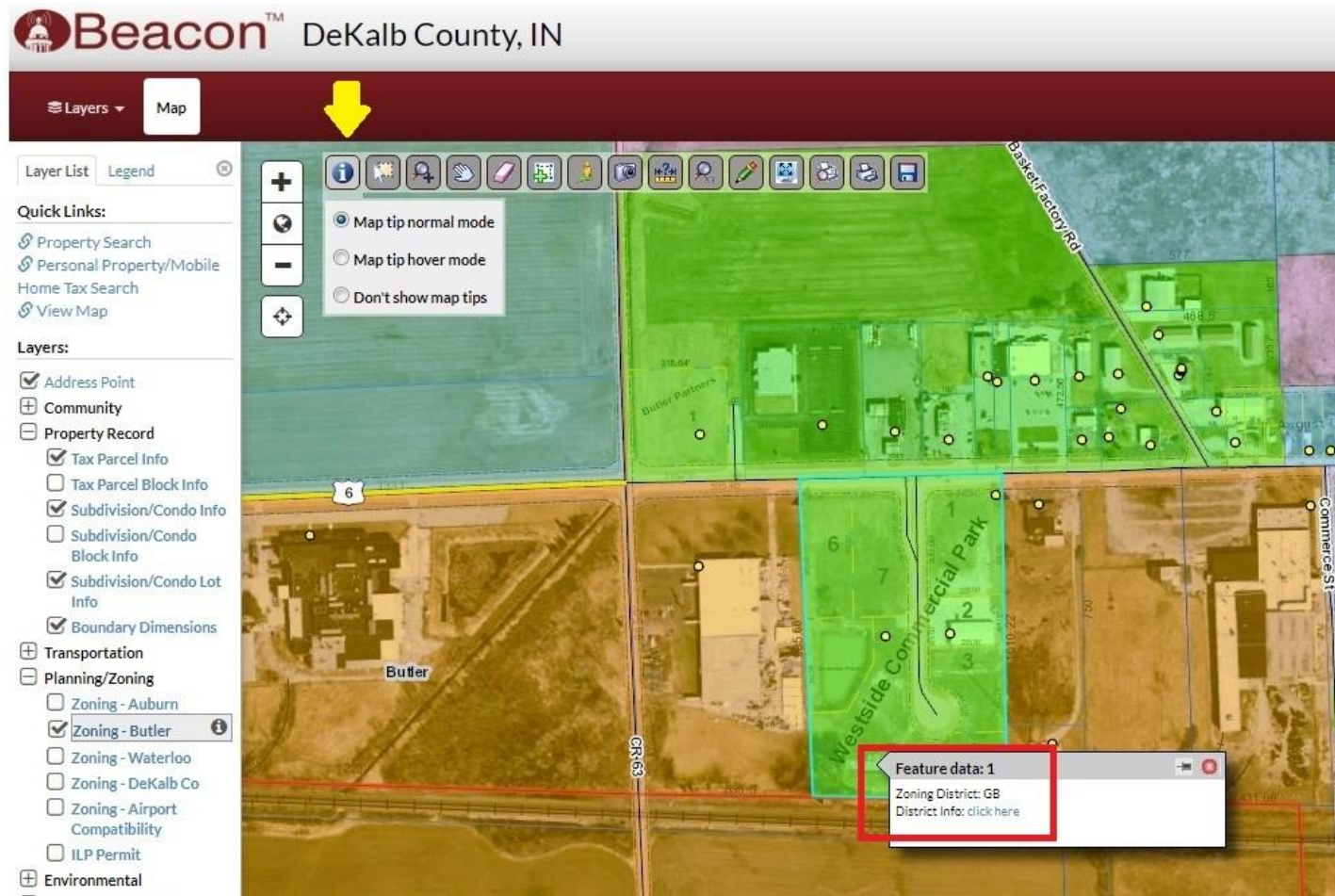
- AG
- GB
- HI
- INS
- LI
- MFR
- MHC
- NB
- OTR
- REC
- SFR
- WP-OL

# CITY OF BUTLER, INDIANA ONLINE ZONING MAP

- [City of Butler Zoning Ordinance – Full Searchable Edition](#)
- [City of Butler Website](#)
- [The Roads to Butler’s Future](#)



2. Once the “I” icon beside “Zoning-Butler” is activated, click on the “i” icon in the toolbar at the top...indicated with a yellow arrow below. You can then identify the parcel for which you are seeking zoning information by clicking on the parcel. A pop-up box will appear titled “Feature data,” as noted outlined in red below. The zoning district abbreviation for the parcel will appear, as well as a link for additional zoning district information. Clicking on the link, or right-clicking to open an individual tab, will take you to a summary for the zoning district.



AG

GB

HI

INS

LI

MFR

MHC

NB

OTR

REC

SFR

WP-OL



# CITY OF BUTLER, INDIANA ONLINE ZONING MAP

- [City of Butler Zoning Ordinance – Full Searchable Edition](#)
- [City of Butler Website](#)
- [The Roads to Butler’s Future](#)



3. The zoning district summary also provides links, outlined in red below, to both the full online zoning ordinance chapter for the zoning district, and to the online “Land Use Matrix,” which provides information regarding permitted and special exception uses for all Butler zoning districts.

<a href="#">Article 3 – Full Chapter Online Link for setbacks, lot coverages, etc.</a>	<a href="#">Land Use Matrix Online Link for permitted uses in each district</a>
--	---

## GB – General Business District

### 3.3 GB District Intent, Permitted Uses, and Special Exception Uses

**District Intent** – The GB (General Business) District is intended to provide a land use category for general business uses, retail uses and offices.

#### Permitted Uses

##### Residential Permitted Uses

- Assisted living facility.
- Dwelling unit, upper floors.
- Lodging house.
- Nursing home.

- AG
- GB
- HI
- INS
- LI
- MFR
- MHC
- NB
- OTR
- REC
- SFR
- WP-OL

- ❖ [An aerial of the City of Butler, Indiana Extraterritorial Jurisdiction is available here.](#)
- ❖ For more information regarding Butler’s zoning requirements, please contact the Butler City Planner at 260-868-5200, or at [planner@butler.in.us](mailto:planner@butler.in.us)
- ❖ Thank you for your interest in the City of Butler, Indiana.