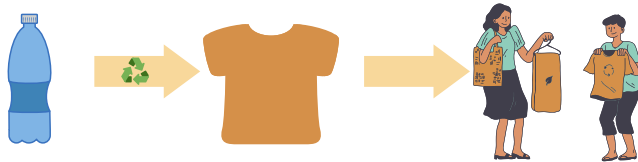


Why Recycle?

Recycling an item means it does not go to the landfill. Instead that item is used to make something new. This gives the item a new life!



Pennsylvania has a recycling law, Act 101, which mandates municipalities with a population of 5,000 or more people to have a recycling program for their residents.



Recycling creates jobs! 66,041 jobs here in Pennsylvania are related to the recycling and reuse industry.



The Lackawanna County Environmental Office provides assistance with:

- Establishing recycling programs
- Waste reduction techniques
- Municipal reports and grants

Presentations are offered on:

- Recycling
- Environmental shopping
- Waste reduction
- Water pollution
- Water conservation



Please contact us at:

☎ 570-963-2017

✉ shapiron@lackawannacounty.org

🌐 www.lackawannacounty.org/government/departments/environmental_sustainability

📘 Lackawanna County Environmental Office

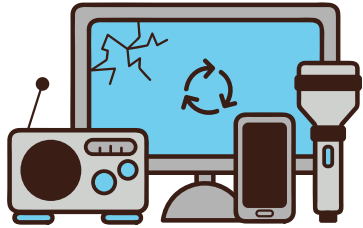
A Guide to the Basics of Recycling



Lackawanna
County

Commissioners
Jerry Notarianni • Debi Domenick, Esq. • Chris Chermak

ELECTRONICS RECYCLING IN PENNSYLVANIA



COVERED DEVICE RECYCLING ACT (ACT 108)

- Covered devices such as TV's, computers, computer, monitors, and peripherals (keyboard, mouse, and other computer accessories) cannot be thrown out in Pennsylvania. They **MUST** be recycled.
- Even though you have to recycle electronics, there are few places to recycle electronics in Lackawanna County. As of today, there are no businesses that recycle TVs.
- Please contact your State Representative today and ask them to fix the issues with ACT 108!

**CHECK OUT OUR WEBSITE FOR
MORE INFORMATION ON HARD TO
RECYCLE ITEMS!**

WHAT CAN NOT BE RECYCLED?



- Straws
- Food containers (ex. yogurt or butter)
- Takeout containers
- Food wrappers
- Styrofoam
- Paper or plastic dishes, cups, and utensils
- Plastic wrap
- Napkins and paper towels
- Toys
- Windows

Helpful Tips:

- Give bottles and jars a quick rinse before placing them in the recycling!
- Flatten boxes to increase space in your paper recycling bin
- Contact your town for specifics on their recycling program



WHAT CAN BE RECYCLED?

Glass

Bottles and jars **ONLY**
*Please do not place
broken glass in the bin*



Metal Cans

Aluminum and Steel

Paper

Newspaper, Office paper,
junk mail and magazines



Cardboard

Heavy shipping boxes,
cereal boxes (inside liner
removed), and paper
towel rolls

Yardwaste

Leaves, brush, and grass
*Brush cut down to 4 feet or smaller
lengths and no bigger than a
2-inch diameter*

